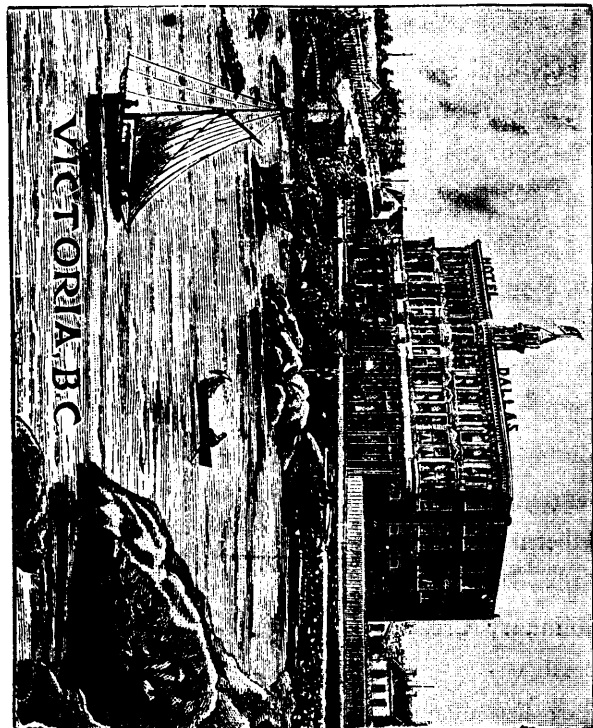


HOTEL DALLAS,

VICTORIA, B. C.



HOME FOR TOURISTS.

Strictly First-class. Rates, \$2.50 to \$5.00 per Day.

W. JENSEN, Proprietor.

Cowper=Coles & Johnson,

Mining Brokers and Agents.

ROSSLAND, B. C.

Clocks,

Diamond Settings, Wedding Rings, and Special Designs in Jewelry made to order.

Watches,

MAIL ORDERS SOLICITED.

Silverware.

GEO. E. TROREY,

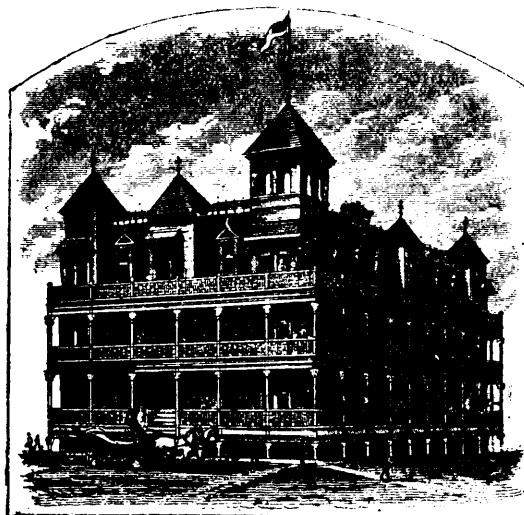
MANUFACTURING JEWELLER AND
WATCHMAKER..

CORDOVA ST., VANCOUVER.

—THE—

MANOR HOUSE

VANCOUVER, B. C.



FIRST CLASS IN EVERY RESPECT.

RATES: \$2.00 Per Day and Upwards.

THE HICKMAN, TYE HARDWARE CO., LTD.,

32-4 YATES ST., VICTORIA, B. C.,

IMPORTERS OF

Iron, Steel, and Hardware.

MINING AND MILLING

SUPPLIES A SPECIALTY.

GOLD! GOLD! GOLD!

— HOW TO REACH IT.

TAKE THE

ASHCROFT TRANSFER and FEED STABLES'

Rigs to any part of the famous Cariboo and Lillooet gold mining districts and also to the Chilcotin stock ranges. Special attention given to miners, prospectors, and commercial travellers. Saddle, pack, driving and work horses for sale or hire. Stables close to C.P.R. depot, Ashcroft, B.C.

COLLINS & HADDOCK, Props.

P.S.—If going to Cariboo write us in advance, and mention this paper.