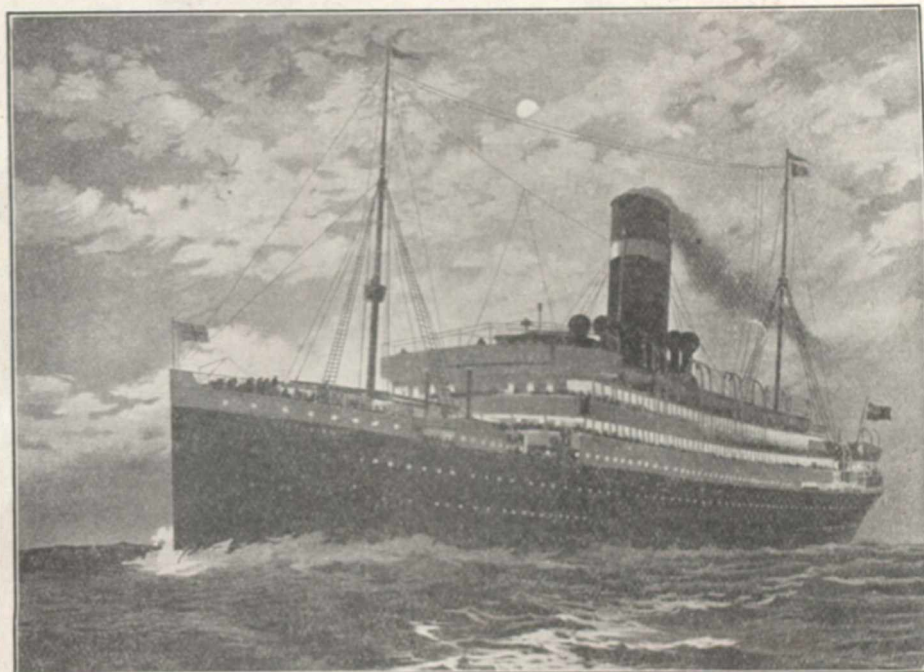


Allan Line Steamship Co. Ltd. ESTABLISHED 1854



Turbine R.M.S. Victorian, 12,000 Tons

ROYAL MAIL SERVICE

St. John, N.B., and Halifax, N.S.
To Liverpool.

STEAMERS:

Victorian, Virginian,
Corsican, Tunisian
Grampian, Hesperian.

6 Steamers - Tonnage 66076

OTHER SERVICES

St. John to London via Havre
Portland to Glasgow
Boston to Glasgow

For full information, rates, sailings (Summer Sailings, 1911 from the St. Lawrence,) apply:—

H. & A. Allan,
General Agents,
Montreal.

CHRISTMAS SAILINGS

Virginian	from St. John,	November 25th	Halifax,	November 26th
Tunisian	"	December 3rd	Direct	
Victorian	"	December 9th	Halifax,	December 10th
Grampian	"	December 15th	Direct	

W. R. Allan	"THE ALLAN LINE"
General Agent	Ontario General Agency
Can. North West	77 Yonge Street
Winnipeg.	TORONTO.

"Ideal Ships for Winter Trips"

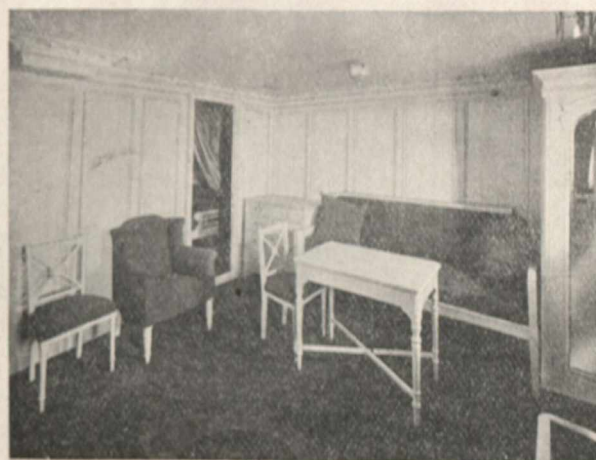
THE BEST SERVICE

You can make the best time between

TORONTO
MONTREAL and OTTAWA
on the

CANADIAN PACIFIC 10:00 P.M. TRAIN
From **NORTH TORONTO STATION**
(Daily except Sunday)

Through sleepers Montreal and Ottawa
ARRIVES MONTREAL 7:00 A.M.



Sitting Room, Private Apartment Royal Edward

The quiet elegance, comfort and exclusiveness of the suites of private apartments on the Royal Edward and Royal George---the fastest and finest appointed steamers on the St. Lawrence route---are unexcelled by anything on the Atlantic. If you are anticipating a trip to Europe, write for particulars regarding these private suites; the slightness of the extra cost will surprise you. All steamship agents or Wm. Phillips, Acting Traffic Manager, Canadian Northern Steamships Ltd., Toronto. Ticket offices, 52-54 King St. E



The Grand Trunk Railway System

IS THE ONLY LINE REACHING

Two of the Leading Health Resorts
IN AMERICA

"St. Catharines Well," the Famous Salt Springs, St. Catharines, Ont.
Mount Clemens, Mich., the Mineral Bath City.
Both of these places are Famous Health Resorts.

Write to J. D. McDONALD, Union Station, Toronto, or to J. QUINLAN, Bonaventure Station, Montreal, for finely illustrated descriptive advertising matter of these resorts giving all information, hotel rates, etc.

W. E. DAVIS, Passenger Traffic Manager, Montreal.	G. T. BELL, Ass't Passenger Traffic Manager, Montreal.	GEO. W. VAUX, General Passenger Agent, Montreal.
---	--	--