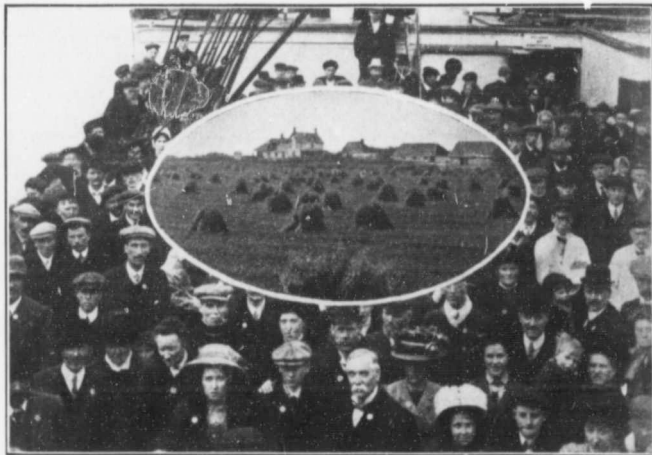


Company will supply the new-comer with seed of proved quality at cost prices, and, through its Agricultural Branch, will assist him to get the right kind of a start. At all times, experts of long years' experience in all branches of husbandry are at his command; market experts stand ready to advise him of the best methods for disposing of his produce. The Company has under process of development twenty-five demonstration farms at various points throughout the Prairie Provinces; these will be operated on a mixed farming system, and full accounts kept. The practical experts in charge of these farms are expected to make them pay; were this not so, little of real value would be demonstrated. The books are open for inspection, and the farm manager is always ready to give aid and advice.

received a great impetus by past and present competitions conducted by the Agricultural Branch.

At various central points the Company will place high-grade bulls for service, the only charge being the negligible one of 50c., which will go to remunerate the caretaker. To farmers having quantities of feed on hand, the Company furnishes cattle, hogs and sheep at cost, making mutually satisfactory terms of payment. In conjunction with the provincial departments of agriculture, the Company runs agricultural demonstration trains, through the Prairie Provinces; the trains are in charge of experts, and lectures and demonstrations are given at central points. At some of its farms the Company has installed creameries paying the highest cash price for milk brought in by farmers, and turning back the skim milk for feeding purposes. At certain points the Company has established egg circles, taking all eggs brought in by farmers, and paying cash for them. The Company is interesting itself in the formation of circles for the cooperative breeding, care, feeding and marketing of live stock.



**MIXED FARMING YIELDS  
GREATEST PROFITS!**

The above is but a brief resume of some of the paternal policies by which the Canadian Pacific Railway betters the lot of settlers. Even a casual perusal of them will show the reader that all efforts are being made to direct the agricultural activities of Western Canadian farmers toward a safe and sane system of mixed farming. Time and again it has been proven that such a system returns the greatest profits,—and in what country or district could such a system be more profitable than in Western Canada? Here grains, grasses, roots, vegetables, horses, cattle, sheep, hogs and poultry all flourish and add to the farmer's bank account. Stock diseases are practically unknown, and millions of bushels of feed are exported yearly. And yet the Canadian West is today an importer, instead of an exporter, of live stock and dairy and poultry products; as a result, prices for crop on the hoof are high, making an exceptionally attractive market.

**WHY THEY COME TO WESTERN CANADA**—Many a farmer possessed of but limited means, settling in Western Canada, finds himself at the end of a few years the owner of a profitable farm and comfortable home, free of incumbrance.

The Agricultural, Animal Husbandry and other branches are constantly carrying on competitions which are not only valuable for purposes of demonstration, but afford progressive farmers opportunity to acquire cash prizes. At the present time the Company has in progress competitions with prize lists aggregating some thousands of dollars. Among these is a steer-feeding contest for farmers' sons; the boys are each furnished with 8 head of prime feeder steers, and are feeding them according to their own methods. In the spring the animals will be sold, the contestants receiving the advance in price. In addition, the ones having the greatest success will receive cash prizes. The Forestry Branch is offering \$2,400 in cash prizes to farmers in certain districts raising the best wind-breaks. Alfalfa culture has

To sum up, the Canadian Pacific Railway has no land for sale to speculators, but to actual settlers it offers fertile lands at low prices on twenty-year terms of payment, interest at six per cent. per annum. The Company will extend aid to the value of \$2,000 for farm improvements, and \$1,000 worth of live stock, and assist the settler in every possible way. The Company has never yet foreclosed on a farmer making any sort of an effort to get on his feet. To the