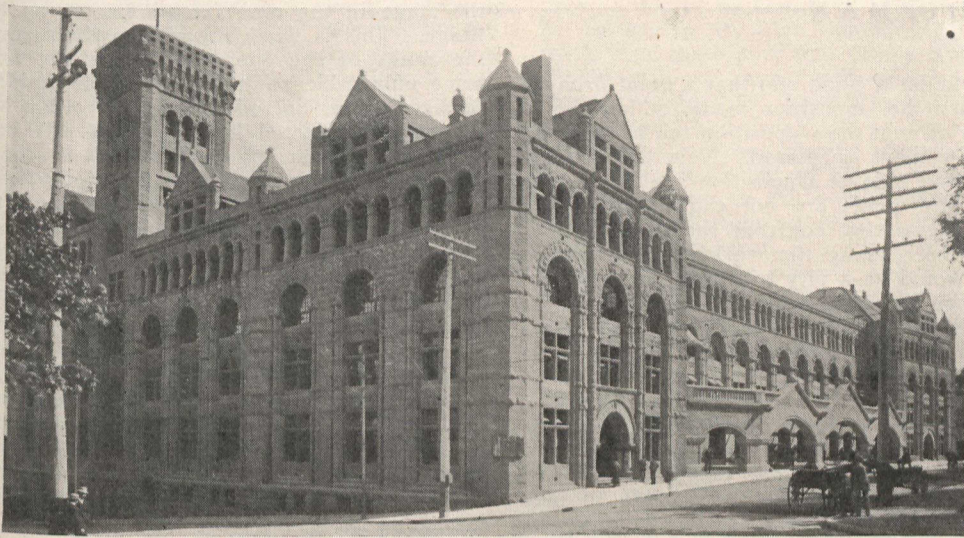


A CURIOUS RAILWAY ACCIDENT



Windsor Station, Montreal—This Magnificent Station is to be further enlarged.

MONTREAL has terminal railway stations, that is station-houses built across the ends of the tracks instead of parallel to the tracks. Twice in the history of these stations, trains have gone too far and crashed into the buildings. The latest occurred on Wednesday of last week, when the Boston Express crashed into the Windsor Station. Fortunately it struck a portion of the building in which there were few people and the casualties were small. The passengers were uninjured. Investigation shows that some miles out, a plug had blown out of the engine and the escaping steam had forced both fireman and engineer out of the cab before the throttle could be closed or the "emergency" released. Without engineer or fireman, the great mogul swept through the yards and into the station at a speed which was lessened only by the brakes applied by the brakeman. Apparently there was no criminal negligence of any kind whatsoever, as is too often the case. The station will be repaired shortly, and further enlargements of this largest station-house in Canada are also being planned.



The Donegana Street View of the Station, showing the Baggage Car lodged in the Ladies' Waiting Room.



The Ambulances at the Main Entrance after the Accident.