

THE EVENING TIMES-STAR, SAINT JOHN, N. B., MONDAY, SEPTEMBER 21, 1925

MOTORS LEAD UPWARD TREND IN WALL STREET

General Motors and Studebaker Reach New Highs
Hudson Advances

TRADING IS DULL AT MONTREAL OPENING

Brazilian, Montreal Power and Shawinigan are Only Active Features.

Canadian Press.

NEW YORK, Sept. 21.—Motor shares continued to hold the leadership of the upward movement in the stock market as trading was resumed today. Heavy buying orders accumulated over the week-end for the leaders in this group, sending General Motors and Studebaker to new high records and lifting Hudson Motors five points in the initial dealings. Popular specialties also were in demand with gains of 1 to 2 points scored by Pullman, United States Steel Iron Pipe and International Harvester.

DULL IN MONTREAL.

MONTREAL, Sept. 21.—Trading was dull at the opening of today's stock market, with Brazilian, Montreal Power and Shawinigan rights the only active issues. Brazilian was unchanged at 4 1/2, Power off 1-8 to 2 1/2, while the rights advanced a similar fraction to 7 1/2. Waynamack, the only paper to receive attention, was off 3-4 at 5 1/2. The strong spot was Mackay, up 1/4 in a small lot transaction to 138. The following stocks sold unchanged: Macdonald, 12; Bromington, 24; Dominion Glass, 108; Winnipeg Ralls, 46 3/4. In small lot transactions, National Breweries was up 1/4 to 37 1/2, Canadian Cereals, 1 to 30, and Bank Montreal, 1/4 to 202.

NEW YORK MARKET.

Stocks to 12 noon.

Sept. 21, 1925.	High	Low	Close
Atchafalca	125 1/2	125 1/2	125 1/2
American Can	24 1/2	24 1/2	24 1/2
Am. Sm. Co.	12 1/2	12 1/2	12 1/2
Baldwin	12 1/2	12 1/2	12 1/2
Bell & Co.	12 1/2	12 1/2	12 1/2
Dodge Corp.	12 1/2	12 1/2	12 1/2
Dodge Prod.	12 1/2	12 1/2	12 1/2
Q. P. R.	12 1/2	12 1/2	12 1/2
General Motors	104 1/2	104 1/2	104 1/2
Radio	104 1/2	104 1/2	104 1/2
Studebaker	104 1/2	104 1/2	104 1/2
Studebaker	104 1/2	104 1/2	104 1/2
Union Pacific	104 1/2	104 1/2	104 1/2
Woolworth	104 1/2	104 1/2	104 1/2

MONTREAL MARKET.

Stocks to 12 noon.

Sept. 21, 1925.	High	Low	Close
Atchafalca	125 1/2	125 1/2	125 1/2
Am. Sm. Co.	12 1/2	12 1/2	12 1/2
Baldwin	12 1/2	12 1/2	12 1/2
Bell & Co.	12 1/2	12 1/2	12 1/2
Dodge Corp.	12 1/2	12 1/2	12 1/2
Dodge Prod.	12 1/2	12 1/2	12 1/2
Q. P. R.	12 1/2	12 1/2	12 1/2
General Motors	104 1/2	104 1/2	104 1/2
Radio	104 1/2	104 1/2	104 1/2
Studebaker	104 1/2	104 1/2	104 1/2
Studebaker	104 1/2	104 1/2	104 1/2
Union Pacific	104 1/2	104 1/2	104 1/2
Woolworth	104 1/2	104 1/2	104 1/2

CHICAGO GRAIN MARKET.

To 12 noon.

Sept. 21, 1925.	High	Low	Close
Sept. Wheat	125 1/2	125 1/2	125 1/2
Dec. Wheat	125 1/2	125 1/2	125 1/2
May Wheat	125 1/2	125 1/2	125 1/2
Sept. Corn	125 1/2	125 1/2	125 1/2
Dec. Corn	125 1/2	125 1/2	125 1/2
May Corn	125 1/2	125 1/2	125 1/2
Sept. Oats	125 1/2	125 1/2	125 1/2
Dec. Oats	125 1/2	125 1/2	125 1/2
May Oats	125 1/2	125 1/2	125 1/2

WINNIPEG GRAIN MARKET.

To 12 noon.

Sept. 21, 1925.	High	Low	Close
Sept. Wheat	125 1/2	125 1/2	125 1/2
Dec. Wheat	125 1/2	125 1/2	125 1/2
May Wheat	125 1/2	125 1/2	125 1/2
Sept. Corn	125 1/2	125 1/2	125 1/2
Dec. Corn	125 1/2	125 1/2	125 1/2
May Corn	125 1/2	125 1/2	125 1/2
Sept. Oats	125 1/2	125 1/2	125 1/2
Dec. Oats	125 1/2	125 1/2	125 1/2
May Oats	125 1/2	125 1/2	125 1/2



The Nerve-Tired Business and Professional Man Gets New Vigor from

DR. CHASE'S NERVE FOOD

Morning Stock Letter

NEW YORK, Sept. 21.—Saturday's market closed with a wide range of movement. These moves are not the best thing for the market and some anxiety may be expected in the shape of a technical reaction at this time. Nevertheless there is no change in fundamental conditions and the upward movement of many stocks is not over. One must watch what and where he buys but a great many stocks are going to see higher prices. For some time we have been saying General Motors will reach 110 on this move and Fisher Body 100, with the latter eventually selling at the same price as the former. Calif. Packing should indicate higher prices if it goes above the old high of 135. We are still very bullish on this stock for the long pull. A.G. has made very good and is likely to sell higher. A.G. Prod. is slow but steady. Bepietto Steel is being bought and will go higher. Steel and equipments are likely to have moves this week. C. & O. ordered fifty heavy locomotives from Am. Loco., the largest order in recent months. In the rail, believe St. R. and C. & O. are still among the best speculations.

LIVINGSTON & CO.

Brokers' Opinions

NEW YORK, Sept. 21.—Hornblower and Weeks—"Continue to buy and hold copper, radio issues and railroads. Block Maloney—"We would tie up to all good railroad stocks with large assets. N. Y. C. should be bought on all recessions." Houseman & Co.—"Some of individual issues which we think are to be bought for trading profits include Can. Gas, Bell, Al. Loco. Harvester, B. & O. Mont. Power, Eastman Kodak, West. Am. Pacific and Int. Paper." Bachs & Co.—"Try for quick turns in any stocks which, by their outstanding strength, show the results of special interest, and promise over night trading profits."

New Society Is Formed in West End

The Assumption Dramatic, Literary and Athletic Club, was formed last evening at a largely attended meeting called by Rev. J. J. Ryan. The new club was inaugurated with a large membership and it plans to arrange a big programme of winter activities of literary, dramatic and athletic endeavors. One entertainment is already in course of preparation. The officers are President, E. A. Fitzgerald, vice-president, Miss Susie Murphy, secretary, Miss Marion Farren; additional members of the executive, Mrs. Lena O'Reilly, Miss James Collins, Miss Mabel Scully, P. J. Joyce, C. O. Morris and Jack O'Reilly.

TIME CHANGES C. N. R. LINES, EFFECTIVE SEPT. 27.

With time changes effective on C. N. R. lines, Sept. 27, Train No. 20, the evening Express for Moncton and Truro will leave at 6:10 p.m., instead of 6:15 p.m., and will make suburban stops between Saint John and Hampton, replacing Suburban Train No. 184. Suburban Train No. 184, now leaving Saint John at 6:15 will be cancelled Sept. 26, also Suburban train No. 185, leaving Hampton at 6:25 p.m. No. 24, the Sussex train will leave at 6:15 p.m. (Atlantic time), instead of 6:10. No. 25, the morning train from Sussex, will arrive at 6:45 a.m. Suburban trains will leave Saint John for Hampton at 12:30 p.m. and 10:30 p.m. Suburbans will leave Hampton for Saint John at 6:40 a.m., 1:40 p.m. Other trains on main line are not changed.

On the Valley Railway, train No. 45, leaving for Fredericton at 4:35 p.m. (Atlantic time), will operate on Tuesday, Thursday and Saturday, instead of daily, except Sunday.

Train No. 46 will leave Fredericton at 9:30 a.m. on Tuesday, Thursday and Saturday, instead of every week day, arriving in Saint John at 12:45 p.m. The early morning train on Mondays from Fredericton to Saint John, arriving at 7:30 a.m., will be cancelled. Train No. 242, leaving Fredericton for Saint John at 6:45 a.m., will run on Monday, Wednesday and Friday, arriving in Saint John at 11:45 a.m. (Atlantic time).

BETTER BUY NOW

REMEMBER THE TROUBLE LAST YEAR WITH YOUR FURNACE COAL—NO HEAT—TOO MUCH ASH AND STONE—IN FACT DIDN'T YOU PAY FOR COAL AND GET ABOUT HALF NON-BURNABLE MATTER?

YOU MAY HAVE YOUR CHOICE OF THE VARIETY OF COALS FOR SALE—BUT HERE'S OUR TIP—USE WELSH JUMBO. WELSH HAS SO MUCH MORE HEAT—VERY LITTLE ASH—LONG LASTING—ECONOMICAL.

TELEPHONE MAIN 1913

CONSUMERS COAL CO., LIMITED

CHARLOTTE, BELOW BRITAIN STREET

Liquor Flow Along Frontier Increases Despite Blockade

BUFFALO, N. Y., Sept. 21.—The flow of Canadian rum along the Niagara frontier has been unbroken again. Thousands of cases of choice liquors are being transported across Lake Erie from the vicinity of Port Colborne, Ont., each night, according to reports from the rum runners' camps where customs department investigators are "planted" as spies.

J. L. Gordon, chief of the customs investigation department, admitted today that his men are in Port Colborne. He refused, however, to divulge any part of the information being flashed to him by them. Intimations, however, tend to show that the rum fleet has reached an unprecedented size and is steadily growing. More than 15 boats make up the fleet at the present time, it is stated on good authority.

Near Ripley, a village 65 miles west of Buffalo on the American shore, officials recently seized 100 cases of "Frontenac ale" (Montreal) and several bottles of "William Penn" whiskey. The reduced his circumstances that he was glad to do odd jobs for a few pennies, tramping about the country searching for work, and at one time acted as porter at the workhouse infirmary where he died.

FORMER FRIEND OF KING DIES PAUPER

Walter W. Butler Nearly Millionaire in Days When Edward VII. Ruler.

LONDON, Sept. 21.—A man who once was almost a millionaire and so friendly with King Edward they called each other "Teddy" and "Walter," died in the workhouse infirmary at Luton, aged 77. He was Walter William Butler, who years ago was a wealthy Liverpool shipbuilder and a personal friend of the King, whom he frequently met at Brighton and elsewhere. Butler was reckless in his generosity, lending large sums, which were never repaid. This and business losses so

Cook Hides In Icebox And Escapes Robbers

NEW YORK, Sept. 21.—Eva Kritcher, cook of the K. & K. Restaurant, had an order of ham and eggs frying at 4 o'clock in the morning when she heard scuffling of feet on the stairs and locked the door on the inside. He is charged with having had custody of the liquor after it was unloaded during the night from the rum boat.

Gestly pushing the swinging door ajar, she saw three men with guns lining the proprietor and twelve customers against the wall. Having \$40 in her stocking, she dashed for the big thick walled icebox, threw herself into it and locked the door on the inside. At the same moment, John Scholik, a dishwasher, tripped in terror, fell down a flight of stairs into the basement and saved \$200.

The robbers took \$800 from Philip Schor, the proprietor, \$300 from the cash register and about \$300 from the pockets of the diners.

British Army Fliers To Wear Chain Armour

LONDON, Sept. 21.—Chain mail vests and steel helmets may soon be standard equipment for machine gunners in British bombing planes.

The proposal is being seriously considered by the British Air Ministry following a study of the greater vulnerability of the position in which the gunner in an airplane fights as compared with the pilot. The pilot is protected from direct frontal attack by the bulk of the engine in front of him, and from behind by the position of the gunner's body and considerable equipment. Only a part of his head appears above the fuselage.

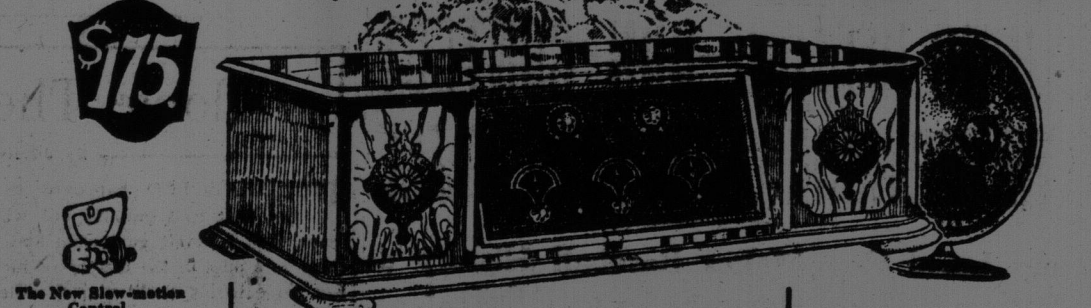
Mgr. Gosselin Goes in Convention With Benediction of Bishop Larat.

QUEBEC, Sept. 21.—Following a report of an ecclesiastical inquiry tribunal, which sat here some time ago to study the life of His Grace Monsignor Leval, the first Bishop of Quebec, and of Canada, Monsignor Amodeo Gosselin, has been instructed to proceed to Rome to give further details on the beatification case of the venerable bishop.

STAGS WIN TWO. The Stags defeated the St. Peter's Jr. Friday night by a score of 5 to 4. The batteries were: For the winners, Damery and McCaulin; for the losers, Damery and McCaulin.

The Stags defeated the Warriors Saturday afternoon by a score of 6 to 2. Batteries: For the winners, White and Higgins; for the losers, Brittany and Johnson.

The NEW RADIO



The Masterpiece of the year!

THE DeForest Model R5 depicted above typifies the achievements on which three of the most successful organizations in the Radio industry have been working. This five-tube receiver utilizes a special type of tuned radio frequency amplification—a circuit with unique tone-recreating qualities.

Gone are all the "a squeaks", "howls" and "hisses". It instantly gives the studio programme, clean and clear, with life-like realism. Gone is the uncertainty and guesswork—you can "log" this set with precision, getting a station at a fixed point on the scale every time.

Gone is the untidy mess of wires and exposed batteries, the ugly black panel, the mechanical look. Instead—a compact unit, batteries all enclosed in a beautiful cabinet fashioned in two-tone mahogany by Canada's finest furniture craftsmen. A dull satin-black panel from which the indicating marks gleam like burnished gold.

The price—like every model in the New "R" series—establishes a standard of dollar-for-dollar value never before available in Canada.

James S. Neill & Sons, Limited, Fredericton, N. B. Distributors for New Brunswick, Manchester Robertson Allison, Limited, Distributors for Saint John City and County and Kings County.

DE FOREST & CROSLEY

Authorized Dealers will Gladly Demonstrate DeForest & Crosley sets and will only sell sets by DeForest & Crosley. Merchants who have the experience, training, service facilities and responsibility which, in our judgment, are necessary in order to ensure you full satisfaction and get your investment in radio. They will be glad to demonstrate any model. For a slight additional charge above the list price they will deliver, through the DeForest & Crosley Time Payment Plan, convenient easy payment privileges.

Send me your booklet "The NEW RADIO—The Best of Wonder" and name of nearest Authorized Dealer. I am interested in a set priced about \$_____.

Name _____ Address _____

Rt. Hon. Arthur Meighen

Leader of the Conservative Party, and Dr. Murray MacLaren, M.P., will address the electors of Saint John-Albert at the

IMPERIAL THEATRE

On Wednesday Evening, Sept. 23

Hon. J. B. M. Baxter, Premier of New Brunswick, will also speak.

Meeting Opens at 8 o'clock

9-24

MONSTER MEETING

Electors Constituency Saint John-Albert

IMPERIAL THEATRE

Monday Evening, Sept. 21st

At 8 o'clock (Daylight Time)

ADDRESSES BY

Rt. Hon. W. L. MacKENZIE KING, P.C., LL.D. Prime Minister of Canada, and Others

8-22

NEW FERRY LAUNCHED.

CHATHAM, Sept. 21.—The new ferry-steamers was launched on Saturday after being christened by Miss L. M. C. in whose honour the new craft was named. The new boat will replace the Sybella H., which has been on the route for about 40 years between this town and Ferryville. Miss Ullock saved four people from drowning last year.

TO SHOE MEN'S MEETING.

Harold W. Rising, first vice-president of the Canadian National Shoe Retailers' Association, will leave today to attend an executive meeting at the King Edward Hotel, Toronto, on Wednesday.

Investment Guidance

As a general rule, the average investor is not in a position to carefully weigh the facts presented to him regarding securities, and for this reason should always seek the guidance of a reliable investment house.

The National City Company Limited, through its wide experience and the extensive facilities at its disposal, is in a position to furnish authoritative information regarding not only Canadian but also American and Foreign securities.

In our booklet "Investment Securities," which is issued monthly, will be found a list of our current recommendations, all of which have been thoroughly investigated by us.

A copy of this booklet will be mailed regularly, upon request, to any investor.

Write our nearest office.

The National City Company Limited

Head Office—205 St. James Street—Montreal

10 King Street East 294 Union Bank Building 71 St. Peter Street

TORONTO OTTAWA QUEBEC

Advisory Board

MR. CHARLES B. GORDON, G.B.E., Chairman MR. JOHN AIRD A. J. BROWN, E.C.

HON. DR. LOUIS GORDON, E.C.M.A. MR. CHARLES R. HOSKIN WILSON L. MATTHEWS

MR. F. E. MERRITT, E.C. MR. W. M. MURPHY MR. C. H. HARRIS MR. G. H. M. C.

MR. R. L. FRANK MR. W. N. TILLEY, E.C. HON. J. M. WILSON

99

There Is a Big Difference in Furnaces

Compare the Hecla

MOST furnaces are pretty much alike. But patented features make Clare Bros. Hecla better than any other furnace you can buy. The famous Clare Bros. Steel-Ribbed Fireproof alone meets today's fuel situation. Even where coke or soft coal must be used, it won't burn out, because it radiates the heat more quickly. And it is used only in Clare Bros. Furnaces. The Steel-Ribbed Fireproof has over three times the radiating surface of other fireproofs of the same size. It saves one ton in seven.

Other Exclusive Hecla Features Patented Fused Joints, which mean no gas, no dust—even with soft coal. Separate Grate Bars for easy shaking. Big Circular Waterpan to insure lots of moisture to every room. Big Door for easy coaling.

A Complete Line at All Prices

The Clare Bros. dealer has Hecla Furnaces in pipe or pipeless—regular construction or all cast-iron. He has other Clare Bros. Furnaces for special needs—lower-priced furnaces, soft coal furnaces. All have the Clare Bros. Steel-Ribbed Fireproof and other Hecla features.

Write for Free Heating Booklets and Money-Saving Plans

Our free Heating Booklets tell you how to heat your home properly at lowest cost. Our free plans show you exactly where to put your furnace—what size to use—how it should be installed. This service is free. Just send us a coupon, a plan of your home and tell us what kind of fuel you want to burn. The booklets and plans will be sent you.

CLARE BROS. & CO., LIMITED, PRESTON, ONT.

CLARE BROS. HECLA

Canada's Most Famous Furnace