

At Yonge, Queen and James Street doors are order boxes where orders or instructions may be placed. These boxes are emptied at 8.20, 9, 10 a.m., and 1, 4 and 4.40 p.m.

EATON'S DAILY STORE NEWS

THE STORE'S CONVENIENCES
The Waiting and Rest Room,
Third Floor. The Information Bureau and Post Office, Main Floor.
The Free Parceling and Checking Desk, in the Basement.

A Practical Way of Announcing That the Boys' Clothing Department Is in Readiness For the Spring Outfitting

And with Easter about three weeks away, what boy doesn't want a new suit. Come prepared to share in these most unusual values—values which anyone with a knowledge of existing conditions will readily realize. All smart new spring suits. The illustrations are made from drawings by our own artists from the actual garments, and with EXCEPTION OF A are lettered for convenience in ordering by mail, telephone, or through Shopping Service.

Sample Suits, Also B, C, D and E--Five Great Specials in the Boys' Department on Main Floor

Boys' Sample Suits, Another Great Special Offering, \$8.85

There are about 234 suits in this lot — all beautifully made, well tailored suits in worsteds and cheviot finished tweeds, and what a selection of patterns, almost anything a boy could desire—fancy weaves, stripes, pick-and-pick, and fancy check patterns, in browns and greys. They are in fancy Norfolk or pinch-back models, showing patch pockets and sewn or three-piece belt at waist. Bloomer trousers with belt loops and adjustable bands. Sizes 26 to 35. Extra special 8.85



F—Suits, in smooth - finished grey tweeds, in thread stripe pattern. Pointed yoke at back only; one knife pleat at each side of back. Belt has "trench" buckle. Fancy patch pockets. Bloomer pants. Sizes 29 to 34. Price, **13.50**

B—Boys' Suits, with two pairs of bloomers. Only one or two suits of any one pattern. Fancy grey or brown in pick-and - pick, fine stripes, small checks, and many fancy mixtures. All fine wool tweeds and imported English worsteds. Single - breasted, 3-piece belt, and plain pockets. Sizes 29 to 34. Special .. **10.00**

C—Boys' Suits, in brown, fawn, and medium or dark greys, fine closely woven tweeds of smooth or soft finish, in pick - and - picks, hairline or broken stripes and broken check effects. Several styles, including one illustrated. Bloomer pants, with belt loops and expanding knee bands. Sizes 29 to 34. Special **6.90**

These Extra Good Values in Regular Goods



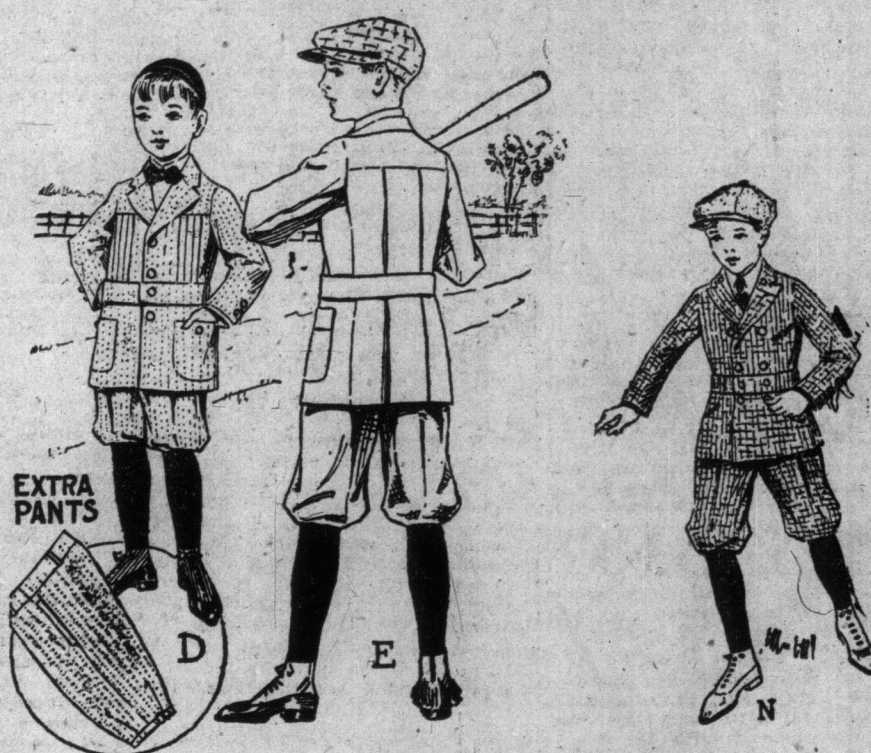
H—Cassimere-finished Tweed Suits, in dark brown, broken check pattern. Plain front showing three patch pockets, pointed yoke at back, with wide box pleat running from yoke to belt. Sizes 29 to 34. Price ... **15.00**

J—Navy Blue Serge Suits, of a fine smooth soft - finished will. Single-breasted coat, with three knife pleats each side of front and back and patch pockets. Bloomer pants. Sizes 29 to 33. Price ... **15.00**

K—All-wool Serge Suits, in "pinch-back" style, with three cord pleats at each side of back. Three - piece belt. Bloomer pants. Sizes 29 to 33. Price ... **16.50**

L—Well-tailored Suits, in several shades of grey or brown, in fancy mixed patterns. These have well-tailored fronts, shapely lapels, and form - fitting shoulders. Yoked back has six knife-pleats and three-piece belt. Bloomer pants. Sizes 29 to 34. Price ... **13.50**

M—\$20 American Model Suits, featuring the invisible belt, fastening in front with "trench" buckle. Fancy homespun effects, showing mottled or overlaid check effects. Bloomers have side straps, belt loops and watch pocket. Sizes 29 to 36. Price ... **20.00**



D—Boys' Suits, with two pairs of Bloomers. They are all made from cloth ends of fine grey or brown cheviot - finished tweeds, and also in fancy worsteds. Single-breasted coat, with three-piece belt - sewn across back and pockets. Sizes 25 to 28. Special **7.75**

E—Boys' Mixed Tweed Suits, in medium or dark patterns. Fancy Norfolk models, with three-piece belt and patch pockets; also model in "Trench" effect, with belt at waist and slash pockets. Bloomer pants. Sizes 29 to 34. Special **5.95**

N—The New "Dee Bee" Suit for boys is a 3-button double-breasted style. Bloomer pants. Medium shades of grey or brown tweed. Sizes 29 to 34. Price... **12.50**

Big Bargain! 1,800 Boys' Tweed Suits Offered in Basement Section at About Half Usual Price, \$2.85

For This Item We Cannot Take Phone or Mail Orders, Nor Can We Promise Assortment of Sizes After One Hour's Selling.

These Suits are in sizes to fit boys from 7 to 15 years. They are offered in the Basement Section because of greater space—a table or two will be devoted to each size with card above giving size and age. This will make choosing comparatively easy and ensure getting proper size quickly. These suits are all made from English tweeds, are in good patterns in mostly greys and browns. They are in herringbone weaves, stripes and plain effects. They are smartly tailored in single-breasted Norfolk styles (illustrated in A to right and left), showing yoke, sewn-down box pleats both front and back and running from yoke to sewn belt at waist. They have flap and patch pockets and good serviceable body linings. All have bloomer pants with belt loops, buckle and straps at knee, and are well lined throughout. Remember the location—Basement Section. Sizes 25 to 33. Extra special, per suit **2.85**



Young Men's and Men's Spring Topcoats, Special Today \$10.75



There are 150 only offered at a price away below usual, and if they were bought in the usual way, they would be dollars more, but owing to them being short lines from a manufacturer, we secured them at special prices. They are slip-ons, loose box-back styles, some with belt all around, others with half belt, close form-fitting models. Tweeds in stylish weaves and patterns, light and medium greys and browns, in mixtures, stripe and small checks; also a number of dark grey and black cheviot cloth Chesterfields. Some are quarter, others half, and many lined throughout. Many shades and patterns to make choice from. Sizes 34 to 44. Today **10.75**

Chesterfield Style Topcoats, always right for general wear. These are made from English cheviot cloths, in dark greys, are single-breasted, with fly front, the back shapes slightly to the form, has centre seam and vent in back; linings and trimmings are of durable quality. Sizes 36 to 44. Price **22.50**

Oxford and Dark Grey Chesterfields, the materials of rich texture, soft-finished chevots of British manufacture, single-breasted, the back draping loose. The lapels are medium length, notch-shaped shoulders are hand built, and collar fits snugly to neck; lined throughout. Price **30.00**

The Tweed Raincoat, a very desirable garment for spring, resists wind and rain, and looks smart. They come in slip-on style, have loose full back, convertible lapels, patch pockets, with top flaps; all seams sewn. They come in light grey, green and pepper-and-salt mixtures, grey overcheck, and have plaid on inner side. Sizes 35 to 44. Price **15.00**

—Main Floor, Queen Street.

Buy Multiplex Hosiery and You're Sure of Good Value

It's quality that counts in Hosiery, for good quality usually means good service, and good service means satisfaction for money expended. Multiplex Hosiery represents the best values we can procure in the various yarns, and the prices are moderate, in spite of the general rise of materials. Ask for Multiplex Brand. The following are some of the lines in the extensive stock:

- Men's Black, Navy or Mahogany Thread Silk Half Hose, made with fine ribbed silk cuff, high spliced silk ankles and double-ply lisle spliced heels, toes and soles. Sizes 10, 10 1/2 and 11. Pair **1.50**
 - Men's Plain Black, White or Tan Cashmere Half Hose, extra ply spliced heels, toes and soles. Made from selected botany yarns, and have fine-ribbed, close-fitting cuff. Sizes 10, 10 1/2, and 11. Pair **.85**
 - Men's Black Cashmere Lined and Fibre Silk-faced Socks, extra ply spliced heels and toes, and fine-ribbed cuff of cashmere. Sizes 10, 10 1/2 and 11. Pair **.50**
 - Men's Mercerized Lisle Half Hose, double ply, spliced at heels, toes and soles. Black, white, mahogany and two shades of grey. Sizes 10, 10 1/2 and 11. 3 pairs for **\$1.25**, or, per pair **.45**
 - Men's Plain Black Cotton Socks for hard, every-day wear, seamless and reinforced at places where the wear comes most. Fine-ribbed cuff. Sizes 10, 10 1/2 and 11. Exception value, pair **.25**
- Main Floor, Yonge Street.

