



1. VELVET AND FAILLÉ BONNET.

2. BLACK VELVET BONNET.

3. THE TOQUE HAT.

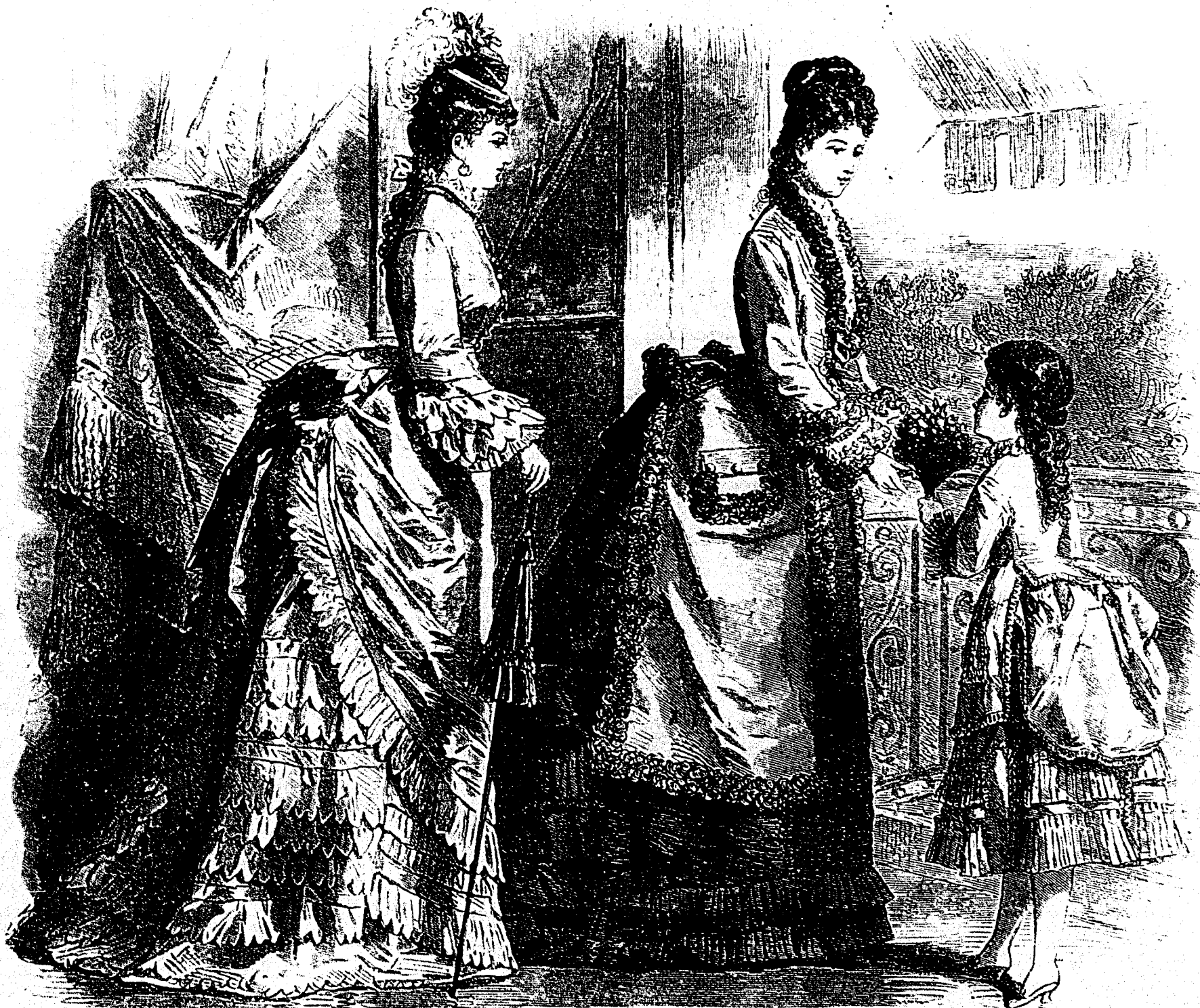


Fig. 1. Promenade Toilette.

Fig. 2. The Directoire Tunic.

Fig. 3. Girl's Cashmere Costume.

1. FASHIONABLE TOILETTES

FALL FASHIONS.

THE FASHION PLATE.

1. *Velvet and Faillé Bonnet.*—The brim turns up in front with a black velvet coronet, and beneath it there is a black net-riche beaded with jet. A tuft of roses of three shades, yellow, pink, and red, ornaments the left side, and there is a series of black faillé loops at the back. The soft crown is covered with two natural feathers.

2. *Black Velvet Bonnet.*—The scarf that is twisted round the crown is foulard, the same colour as the dress worn at the time. Beneath the brim there is a thick wreath of poppies and leaves.

3. *The Toque Hat.*—Black velvet trimmed with écarl lace. A tuft of marguerites ornaments the front, and serves to fasten a black nigré with loops arranged in a formal manner. Ecarl guipure is also used on the outside of the bonnet.

4. *Fashionable Toilettes.* Fig. 1. *Promenade Toilette.*—Striped black and white faillé. The skirt is divided into two parts, and is trimmed in front with a deep plaiting, bordered at both edges with a pinked-on flounce. The back breadths are covered with flounces and bands. The tablier and bodice are trimmed in the same style.

Fig. 2. *The Directoire Tunic.*—Dark brown faillé. The tablier is bouillonné and edged with two narrow flounces, the lower one being mounted

with a heading. The back is entirely covered with flounces and bouillonnés. The Directoire tunic is of écarl Matelassé, bordered with brown feathers.

Fig. 3. *Girl of Ten.*—Prune cashmere over prune silk. The silk skirt is trimmed with two plaitings, and the cashmere polonaise is square in front, and has a round poul at the back, with square basques above. It is edged with a silk riche. — From the *Queen*.