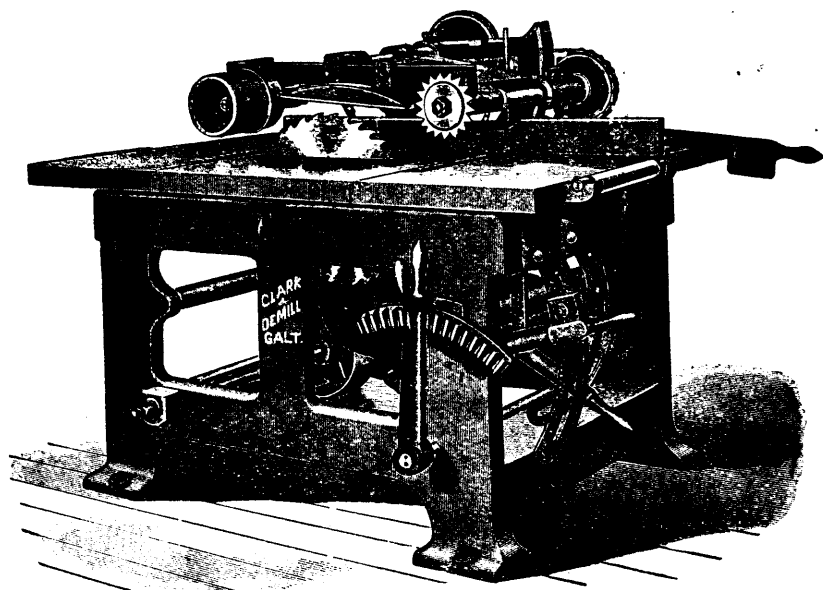


High Grade Wood Working Machinery



...Our No. 24 Variable Self-feed Rip Saw. A simple, substantial saw, designed for heavy work in Planing Mills, Furniture and Sash and Door Factories.

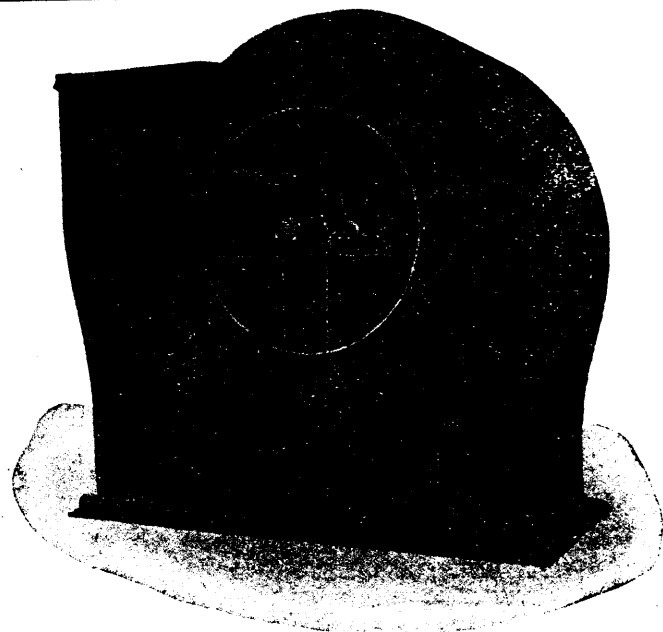
We aim to Lead in the Manufacture of New and Improved Wood Working Machinery

WRITE FOR CATALOGUE AND PRICES

CLARK-DEMILL CO.,
LIMITED

(Successors to Clark & Demill,
Galt, Ont.) **Hespeler, Ont.**

Western Representatives
The WATEROUS ENGINE WORKS CO., LIMITED, Winnipeg, Man.
Agents for Manitoba, Saskatchewan and Alberta.



HOT BLAST HEATING

MECHANICAL DRAFT

DRYING SYSTEMS OF ALL KINDS
FOR DRYING ANY MATERIAL

SHAVINGS EXHAUST SYSTEMS
INSTALLED COMPLETE

Dry Kiln Trucks and Wheels, Lumber Dryers,
Brick Dryers, Steel Brick Cars,
Transfer Cars, Turntables, Etc.

Stationary and Portable Forges, Cupola Blowers, Exhaust Fans, Planing Mill Exhausters
Dust and Shavings Collectors, and Steam Specialties, such as Back Pressure
Valves, Oil Separators, Exhaust Heads, Etc.

VERTICAL AND HORIZONTAL STEAM ENGINES

SHELDONS, LIMITED

Engineers and Manufacturers

GALT, ONT.