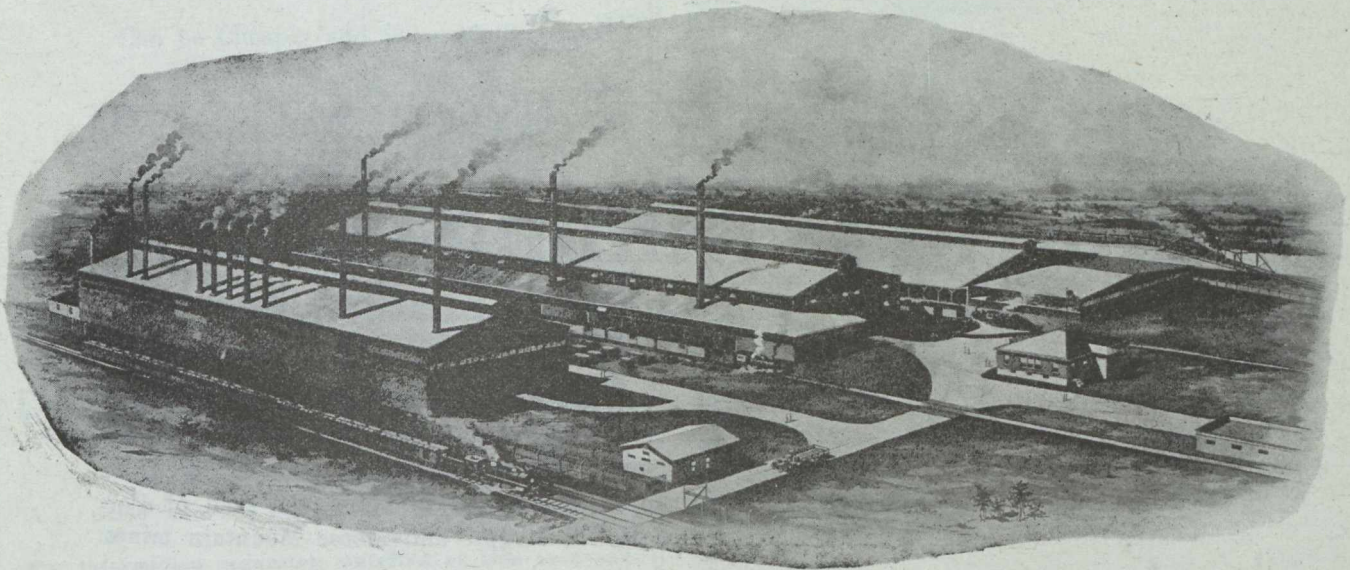


BULLDOG

HOLLOW and SOLID
Mining & Rock Drill Steel



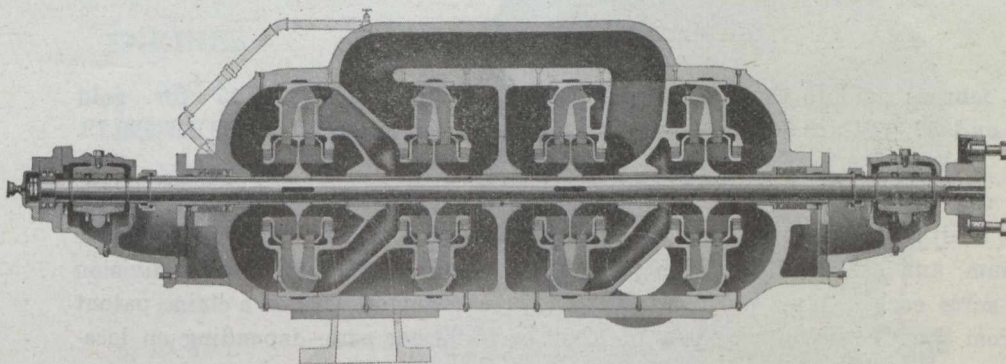
WORKS: ROCKAWAY, NEW JERSEY, U.S.A.

INTERNATIONAL HIGH SPEED STEEL CO.

Agents: Eastern Canada, H. L. Usborne, Toronto.

British Columbia, E. G. Prior & Co., Victoria, B.C.

REES RoTURBo PUMPS ARE SPECIALLY SUITABLE FOR MINES



Type B4 Eight Stage REES RoTURBo Patent Pressure Chamber Pump

They are Self-Regulating.

Have a High and Permanent Efficiency

A Turbine Pump with a Flat efficiency and Power curve with varying discharge.

This Pump with its perfect Hydraulic Balance will meet your pumping problems with greater economy and with higher efficiency.

Get Our Pump and Condenser Catalogues for complete details.

THE GOLDIE & McCULLOCH CO., Limited

Head Office and Works: GALT, ONTARIO, CANADA

TORONTO OFFICE:
Suite 1101-2,
Bank of Hamilton Bld'g.

WESTERN BRANCH:
248 McDermott Ave.,
Winnipeg, Man.

QUEBEC AGENTS:
Ross & Greig,
400 St. James St., Montreal, Que.

BRITISH COLUMBIA AGENTS:
Robt. Hamilton & Co.,
Vancouver B. C.