

THE HOME BANK OF CANADA

ORIGINAL CHARTER 1854

One dollar a week deposited with the Home Bank will amount to Fifty-two dollars at the end of the year, with full compound interest to be added. How many wage-earners can say that they have not wasted, or lost, fifty-two dollars during the past year from the habit of carrying money carelessly in their pockets?

HEAD OFFICE AND 6 BRANCHES IN **TORONTO** JAMES MASON GENERAL MANAGER
BRANCHES AND CONNECTIONS THROUGHOUT CANADA.

Winnipeg Office: **426 Main Street** W. A. Machaffie Manager

A. NAISMITH, President. R. M. MATHESON, Vice-President. C. D. KERR, Treasurer.

The Occidental Fire Insurance Company

Head Office - Wawanesa, Man.

A. F. KEMPTON, Secretary Manager

Subscribed Capital \$500,000 00
Security to Policy-Holders \$640,817.29

Full Deposit with Dominion Government. Practically all classes of insurance written, including Automobile risks.

R. A. BONNAR, K.C. WARD HOLLANDS W. H. TRUEMAN, L.L.B.

Bonnar, Trueman & Hollands

BARRISTERS, ETC.

P. O. Box 158
Telephone Garry 4783

Offices: 503-504 Winnipeg Electric Building
WINNIPEG

WHEN WRITING TO ADVERTISERS PLEASE MENTION THE GUIDE

UNION BANK OF CANADA

HEAD OFFICE: WINNIPEG

ESTABLISHED 1866

Paid-up Capital \$5,000,000
Reserve and Undivided Profits 3,300,000
Total Assets, over 69,000,000

HON. JOHN SHARPLES, Honorary President JOHN GALT, President
Vice-Presidents—WM. PRICE AND R. T. RILEY.

DIRECTORS

W. R. ALLAN S. HAAS G. H. THOMPSON
S. BARKER E. L. DREWRY F. E. KENASTON W. SEAW
M. BELL E. E. A. DEVERNEY F. W. HEUBACH
G. H. BALFOUR, General Manager H. B. SHAW, Assistant-General Manager
P. W. S. CRISPO, Superintendent of Branches

WESTERN BRANCHES OF UNION BANK OF CANADA

MANITOBA—Baldur, Birtle, Boissevain, Brandon, Carberry, Carman, Carroll, Clearwater, Crystal City, Cypress River, Dauphin, Deloraine, Glenboro, Hamiota, Hartney, Holland, Killarney, Manitou, Melita, Minnedosa, Minto, Morden, Neepawa, Newdale, Nivara, Rapid City, Roblin, Russell, Shoal Lake, Souris, Strathclair, Virden, Waskada, Wawanesa, Wellwood, Winnipeg.

Corydon Avenue Logan Avenue
North End Postage Avenue
Sargent Avenue

SASKATCHEWAN—Adanac, Aisask, Arcola, Asquith, Bounty, Buchanan, Cabri, Canora, Carlyle, Craik, Cupar, Cut Knife, Esterhazy, Eyebrow, Fillmore, Grayelbourg, Gull Lake, Herbert, Humboldt, Indian Head, Jansen, Kindersley, Kerr, Robert, Landis, Lang, Lanigan, Lemberg, Lumsden, Luss, Lund, Macklin, Maple Creek, Marysville, Milestone, Moose Jaw, Moosomin, Neber, Hill, Neudorf, Ogema, Outlook, Orbow, Penze, Perdue, Plenty, Qu'Appelle, Regina, Rocanville, Rosetown, Saskatoon, Scott, Strassburg, Swift Current, Simpson, Sintaluta, Southey, Tessier, Theodore, Togo, Tompkins, Vanguard, Viceroy, Wapella, Watrous, Webb, Weyburn, Wilkie, Windthorst, Wolsley, Yorkton, Zealandia.

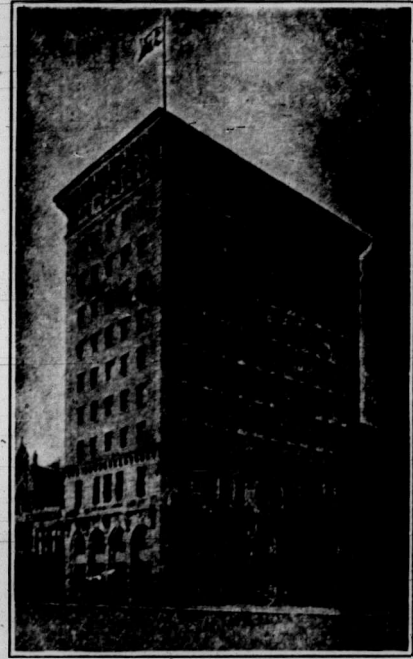
ALBERTA—Airdrie, Alix, Barons, Bashaw, Bassano, Bellevue, Blackie, Blairmore, Bowden, Bow Island, Brooks, Calgary, Carbon, Cardston, Carleton Place, Carstairs, Claresholm, Cochrane, Consort, Cowley, Didsbury, Edmonton, Fort Saskatchewan, Grande Prairie, Grassy Lake, High River, Hillcrest, Innisfail, Irvine, Lacombe, Langdon, Lethbridge, Macleod, Medicine Hat, Okotoks, Passburg, Pincher Creek, Seven Persons, Strathmore, Swallow, Three Hills, Wainwright.

BRITISH COLUMBIA—Enderby, Hazelton, Nanaimo, New Hazelton, Prince Rupert, Telkwa
VANCOUVER—City Heights, Cordova St., Fairview, Granville and Robson St., Main St., Mount Pleasant, Vernon, Victoria. Over 200 Branches in Nova Scotia, New Brunswick, Quebec, Manitoba, Saskatchewan, Alberta, British Columbia.

SPECIAL ATTENTION GIVEN TO FARMERS' BUSINESS GRAIN DRAFTS NEGOTIATED. INTEREST ALLOWED ON DEPOSITS. Agents and Correspondents at all important centres in Great Britain and the United States. Over 296 Branches in all.

LONDON, ENG., BRANCH: No. 51 THREADNEEDLE ST., E.C.

A general Banking business transacted.
WINNIPEG BRANCH: D. M. NEEVE, Manager.



The C that is by the independ cal, cap is inves in The Canada forward All and prevail. Subsc Empire, three ye years. i scriptio Single c Send bank m responsi a letter.

TREE P Citizen attendan will hav 8 and 9 of the fo and fores of the C the Indu It may who will intensely conservat for some it will l Canada. proper m our forest yet many upon the be noted maintain lands uns that suc as they locked up but are t extent w crop of t Among t Bury, Vi C. Brow S. A. J Agricultu Director Chief of Indian B Quebec, the Stat conventic July 7, are cordi part in t

CO-OP Accord tion of C to the c Whitsunt existed a which nu total -mc year's tu 000,000 : The Eng ciety, wi turnover profit of operative 000 on : The Co- and the produced £13,000,0 by the amounte Co-operat penny b hand of :

POPE We ha that our low co-o has been Pius X. i Order of est disti upon a C vices: The h the pion of the C ada on th bishop of cognition many y our fello inaugura Co-operat and on t dian Co-

A RARE OFFER TO NEW READERS

The Guide from now until Jan. 1, 1914 - 25c

Never in Canadian history has there been a change so rapid and influential as that which is transforming the farmers of the west at the present time into men of action.

The new Journalism which The Guide is advocating is revolutionizing newspaperdom. It is sweeping away traditions and awakening the men on the land to a sense of their responsibilities.

The unusual work The Guide is doing in the way of acquainting its readers with the absolute truth on matters social, economic and political, is deserving of the support of every farmer in the west.

Help us to get the only paper in Canada owned and controlled by the

1914 JANUARY 1914						
Sun.	Mon	Tue	Wed	Thur	Fri	Sat
				1	2	3
4	5	6	7	8	9	10
11	12	13	14	15	16	17
18	19	20	21	22	23	24
25	26	27	28	29	30	31

To Jan. 1 1914 **25c**



farmers into every western farm home by asking all your friends who are not subscribers to take advantage of our special low rate. Fill in and mail the annexed Coupon to

The Grain Growers' Guide
Winnipeg - Man.

CIRCULATION DEPARTMENT
THE GRAIN GROWERS' GUIDE
WINNIPEG, MAN.

Enclosed find Twenty-five Cents for which please send The Guide from this date until January 1, 1914

Name _____
Post Office _____
Province _____