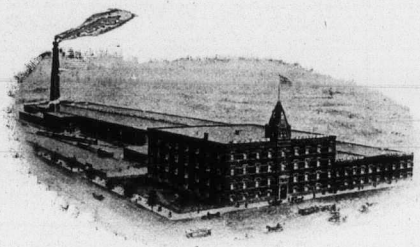


# Wall Papers.



Works, Ontario St. East,  
MONTREAL.

## The Watson Foster Co., Ltd.

Do not base their claim to popular preference on the perfection of their equipment or their actual output of 60,000 rolls per day, but rather on the standard quality of their product in

**MODERN PATTERN DESIGN,  
ARTISTIC COLOR TREATMENT,  
PURITY OF MATERIAL,  
ADMITTED PRICE VALUE,**

For which they are pre-eminently in favor with the trade and to secure which see

"THE WATSON FOSTER CO., LTD."

On margin of each roll of Wall Paper.

The best and largest dealers in every town of Canada carry it in stock.

# BAGS

IN

## Cotton & Jute

**DOMINION BAG  
CO., LTD.**

**MONTREAL**

Fall  
1905



## You will be Surprised

When you see our new Samples for Fall which will contain

### Novelties

That we have not hitherto shown in

### Men's and Women's Footwear

It will pay you to wait a little before closing your orders in

**Ladies' Evening Wear**   **Infants' Fine Oxfords**  
**Men's and Women's**   **Slashed Strap Slippers**  
**Hockey Balls.**   **Buttoned Bluchers.**

All in "BELL" Quality.

**J. & T. BELL**  
**MONTREAL.**

## Exclusive Excellence of Semi-ready Tailoring.

Specialization has made Semi-ready tailoring the best produced.

Steady, all-the-year-round employment secures for us the very highest class tailoring experts. We pick them out from the best workmen in the country.

Under our head designer they work in teams, each employee on that part of a garment which he best knows how to make.

One excels at sleeve fitting, another works away at the collar of a garment, and another does his best work on the stitch-moulding of shoulders. So a garment passes from one team of tailors to another until the finished product is the finest example of the very highest class of workmanship.

You never have to think of fit when you are buying a Semi-ready garment—that is guaranteed. Just think of fitness. Pick out the material and style that best suits your individuality, and we will look after the fit.

You see Semi-ready garments are made in sizes and shapes according to our copyrighted plan of physique types. By this system the sizes are graded within a fraction of an inch. The proportions are made to suit all figures such as short stout, tall stout stooping shoulders, high shoulders, etc. Perfection of fit is guaranteed.

The materials are right—we know it. We buy from the Mills direct—in most cases the cloths are made to our particular order. We guarantee them.

Semi-ready Tailoring is famous for style. It is the standard on which most tailors of Canada work.

With all these excellent features Semi-ready Tailoring has one more protection for you—We refund your money for any reason.

**Semi-ready  
Tailoring**

**Montreal Wardrobes:**

**231 ST. JAMES ST.**

**1551 ST. CATHERINE ST.**