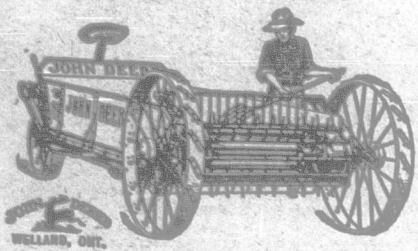


## John Deere Spreader

The Spreader with the Beater on the Axle



Take any manure spreader you have ever seen, remove all the clutches and chains, all the countershafts and stub axles, do away with all adjustments and mount the beater on the rear axle. Rebuild the spreader so that the top of the box is only as high as your hips. Make it stronger. Remove some two hundred trouble-giving parts and throw them away. You will have some sort of an idea of what the John Deere Spreader, the Spreader with the Beater on the Axle, is like.

### The Beater on the Axle

The beater and all its driving parts are mounted on the rear axle. This construction is patented. You cannot get it on any other spreader made.

Power to drive the beater is taken from the rear axle through a planetary transmission (like that on automobiles). It is positive, runs in oil, and does not get out of order.

### Few Working Parts

The John Deere Spreader is so simple that there are no adjustments. It has some two hundred less parts than the simplest spreader heretofore made.

There are no clutches to throw it into gear. The lever at the driver's right is moved back until the finger, or dog, engages a large stop at the rear of the machine. All the chains and adjustments have been done away with.

### Only "Hip-High"

Because the beater is mounted on the rear axle, it is only "hip-high" to the top of the box. Each forkful of manure is put just where it is needed. You can always see into the spreader.

Roller bearings, few working parts, the center of the load comparatively near the horses, and the weight distributed over four wheels, make the John Deere Spreader light draft.

Spreader Data Free—Tells about manure, when and how to use it, how to store it, and a description of the John Deere Spreader. Ask for this data on Package No. Y 119

John Deere Plow Company, Limited  
Toronto, Ontario

## YOUR SAVINGS

When amounting to \$100 or upwards will be received by this Company for investment. Interest at 4½% is paid half yearly. The safety of both principal and interest is absolutely guaranteed.

The Fidelity Trusts Co. of Ontario  
Dominion Savings Building, London  
T. H. Purdom, K. C., President. W. J. Harvey, Manager.

## Photography

For Pleasure and Profit.

Amateur and professional photography taught right at your home in spare time UNDER CANADA'S EXPERT PHOTOGRAPHIC CRITIC AND TEACHER. Be an expert amateur or a capable professional. Don't experiment. Don't guess. Learn How. Write for prospectus.

SHAW CORRESPONDENCE SCHOOL  
393 Yonge St. TORONTO

## A straight from the shoulder message to separator buyers

Beware of separator salesmen who claim that their machine is "just like the De Laval" or "as good as the De Laval".

Such claims are all absolutely false.

Such imitators juggle with words.

Instead of putting into their machine the experience and the

workmanship and the material necessary to make a cream separator anything like as good as the De Laval, they find it cheaper and easier to "claim everything" and make a bugbear of "price" to keep the buyer from discovering the mechanical shortcomings of their machines.

They go on Barnum's theory that the people like to be fooled and they don't care how they get your money just so long as they get it.

It is unfortunate that the separator business should be burdened with such unfair business methods; but since it is it behooves every prospective separator buyer to use care and good judgment in the selection he makes.



Look well to the demonstrated ability of the concern that makes the machine to build a good separator. Avoid buying a machine whose makers have had little separator experience, or who are constantly changing from one makeshift type to another.

Talk with separator users who have learned by experience.

The more you investigate the more you will find that there is one and only one separator that stands in a class all by itself.

It was the pioneer cream separator in 1878 and it has been first ever since.

You will find that more machines of this make are being sold than all other makes combined.

You will find that 98% of the world's creameries use it exclusively.

You will find that every user of this machine is a booster.

You will find that its makers are so confident of its superiority that you may have a free trial of it alongside any other machine and judge for yourself as to which machine will serve you best.

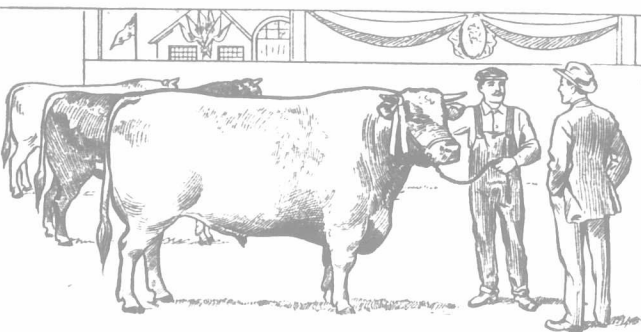
This machine has over 1,500,000 satisfied users.

It will serve you best, save you most, and last the longest.

If you want to be sure of making a good bargain buy a

## De Laval Cream Separator

DE LAVAL DAIRY SUPPLY CO., LTD.,  
MONTREAL PETERBORO WINNIPEG VANCOUVER



Bring Home  
the  
Ribbons  
and  
Get the Money

## BY USING THE BEST STOCK CONDITIONER Caldwell's Molasses Meal

History repeats itself. Go over the lists of prizewinners at our recent fairs, and you'll find that a surprising number were conditioned on Caldwell's Molasses Meal. An examination of "high-priced" records would point to the same thing.

What are the reasons behind these facts? Simply these: Caldwell's Molasses Meal has proven itself to be the best stock conditioner on the market, as well as the most economical in actual use. Ask your feedman! Or write us direct for proofs.

The Caldwell Feed Co., Limited, Dundas, Ont.

BEST RESULTS ARE OBTAINED FROM ADVOCATE ADVERTISEMENTS.



QUALITY

AND

EFFICIENCY

ARE

MAIN ESSENTIALS IN A

PIANO

YOU GET THESE IN A

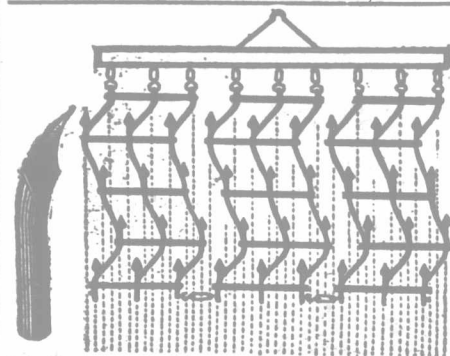
## BELL PIANO

We take the time and pains to build them right.

There are many good features in the BELL never found in other makes.

Information in our (free) catalogue No. 40. Send for it.

The BELL PIANO & CO., Limited  
GUELPH, ONTARIO



## Erie Lance Tooth Harrow

Is the finest and most useful article that can be placed on a farm. The teeth are so shaped that they tear rough ground, and cultivate and make the finest seed bed possible. Once used on a farm, it will be the last implement parted with. Made strong and adapted to the roughest usage. 2-section set, \$10.00; 3-section set, \$15.00; 4-section set, \$20.00. Each section covers 3 feet of ground in width.

## Erie Iron Works, Limited

MAKERS

St. Thomas, Ont.



For unloading hay and all kinds of grain. For wood track, steel track, rod and cable track. Made entirely of malleable iron; no springs. Fitted with our patent deadlock. 25,000 of our Haying Machines in use, is the best guarantee that we build them right. Write for catalogue of Carriers, Slings, Stacks etc.—and name of dealer near you who handles Buchanan's M. T. Buchanan & Co. Ingersoll, Ont.

## Have You Ever

Stopped to think of the remarkable advance made in the last fifteen years by Life Assurance Companies? The business man without Assurance to-day is practically alone in his class—a few years ago he was one amongst a hundred. Your question to yourself should be: "Am I alone?" If so, protect your business, your family and your future. This protection is supplied by the

## FEDERAL LIFE ASSURANCE COMPANY

HEAD OFFICE:

Hamilton, Ontario

Max Stolpe, Landscape Architect—Artistic plans, sketches furnished for all kinds of landscape construction work. Ornamental Trees, Shrubs, Conifers, Hardy Perennials, etc. Ask for price list. 17 Main St East, Hamilton, Ont. Phone 148.