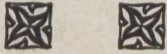
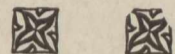
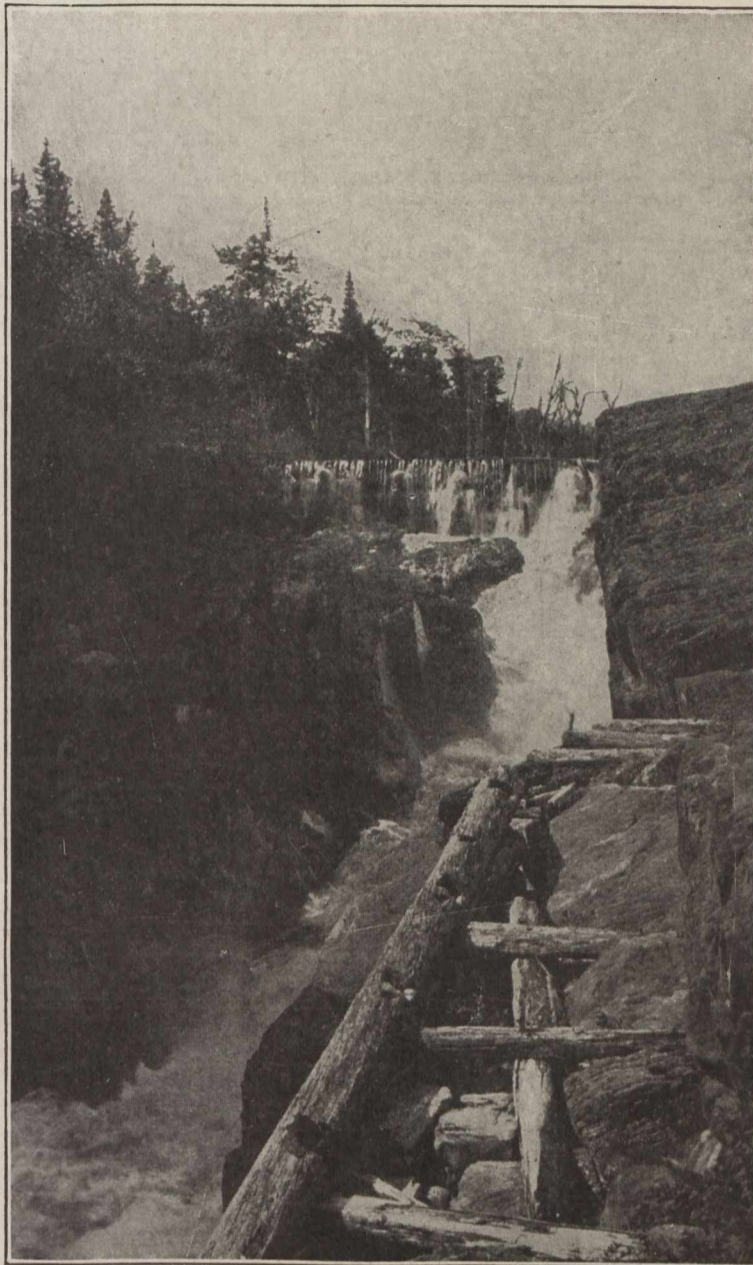


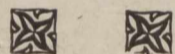
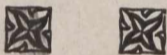
# Nova Scotia Water Power



Investigations now under way by the Nova Scotia Water Power Commission have already revealed a natural resource in water power close to existing industrial centres and excellent ocean shipping ports, which, as yet, has hardly been touched.



A partial development of the site here shown has made possible the profitable operation of gold-bearing ores, great bodies of which merely await the development of adjacent water powers for successful and profitable operation.



*For Further Information write*

**W. B. MacCOY, K. C.,**

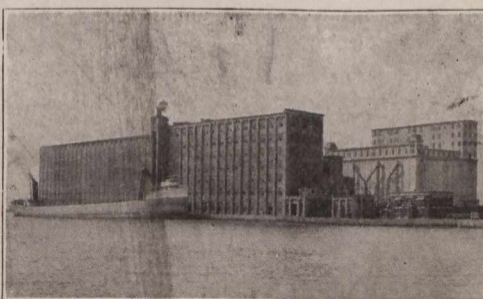
*Secretary Industries and Immigration*

**HALIFAX, NOVA SCOTIA**

## CANADA'S GREATEST FLOUR MILL.

*This mill supplied more flour to the Allies than any other mill in the world*

Domestic Brand **KINGS QUALITY**



*Other mills at Medicine Hat Kenora Brandon Thorold Welland and Dresden*

Export Brand **NELSON FLOUR**

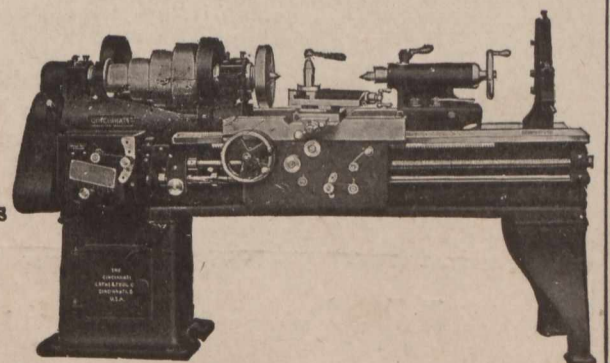
The Maple Leaf Mill at Port Colborne, Ont.

—TOTAL DAILY CAPACITY, 17,000 BARRELS.—

**MAPLE LEAF MILLING COMPANY, LTD.**  
HEAD OFFICE - - - - - TORONTO, CAN.

## “FOSS”

Machine Tools  
Small Tools  
Concrete Mixers  
Contractors' Equipment



**THE GEO. F. FOSS MACHINERY & SUPPLY CO. Limited.**  
305 St. James St., MONTREAL.