

RY

See it.

MACHINES.

..... 15
 3
 15
 30
 30
 35
 30
 10
 30
 55
 17

CHINERY, SELF STACKERS AND MENTS.

..... 50
 50
 30
 3
 14
 62
 Any Thresher
 50
 Guide 50
 9
 35-58
 21
 35
 58-67
 29
 39
 (Ask any
 40
 41
 42
 35
 (Ask any
 35
 38
 51
 58
 59
 56
 63
 35

APPLIES.

(Ask Any
 8
 11
 17
 17
 28
 Co. 24
 s in West-
 Thresher
 35
 17
 35
 ny Thresh-
 35
 use Goods
 us Jobbers
 64

IONS.

..... 18
 vy Team
 15
 15
 55
 25
 30
 30
 10-54
 ruck 15
 30
 17
 27
 65
 10
 60
 28
 30
 56-60
 17
 36
 17
 17
 30
 30
 36
 58
 18
 30
 36

INERY.

..... 7
 7
 8
 48

PUMPS

..... 4
 48
 27-7
 44
 Mills
 24
 35
 34
 33
 33
 43

Never Idle—Always Earning

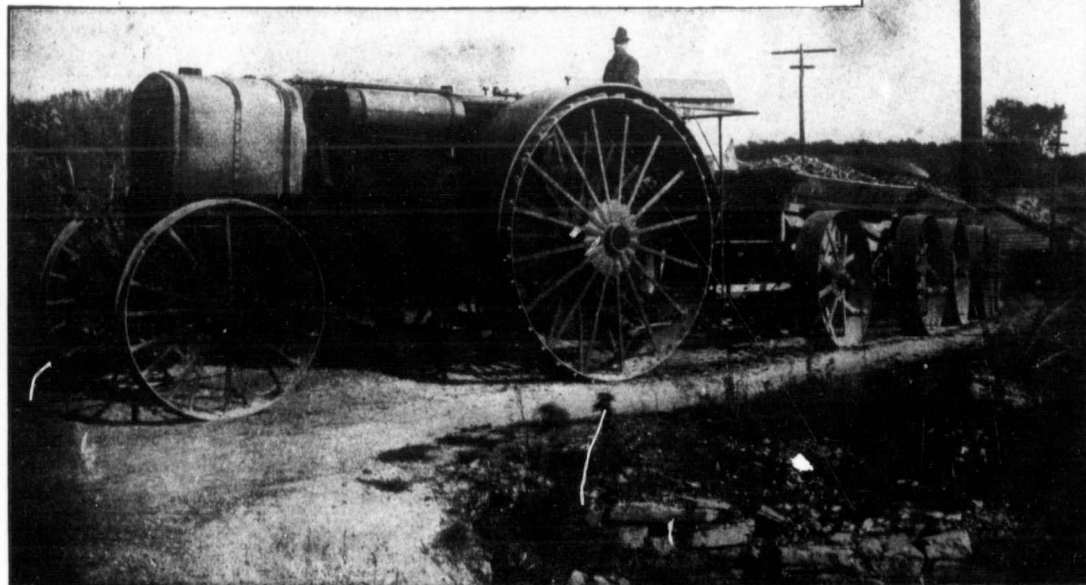
An engine of any make is a poor investment if it is allowed to stand idle a large part of the year. An engine of any make will make **some** money if it can be **kept busy all the time**, but how many engines can be safely trusted to run continuously without eating their heads off in fuel and repairs? The

HUBER GAS TRACTOR

can be depended upon to run night and day if necessary from the 1st of January to the 31st of December for many years with the one understanding that it enjoys its Sunday rest. With reasonable care its repairs will be a negligible quantity, and its earning capacity is practically unlimited.

In **Road Grading or Any Kind of Haulage** there is no more dependable power than a HUBER TRACTOR. With a train of dump wagons the crushed stone or gravel can be hauled on the job faster and better and cheaper than in any other way. If there is grading or plowing to be done, you have a steady, strong power to pull the grader or rooter plow; also for hauling away the dirt in wagons.

In the GOOD ROADS MOVEMENT, no finer, more effective or economic service can be employed



THE HUBER GAS TRACTOR, MADE IN TWO SIZES—18-30 AND 30-60 (TWO AND FOUR CYLINDER RESPECTIVELY)

All our tractors are fitted with a band pulley, making an ideal power for every kind of stationary work. As a threshing engine it is unequalled.

The Huber Gas Tractor "Thirty-Six" is four cylinder, with drive wheels eight feet high and strong gearing built for the hardest work. It uses gasoline or kerosene with great efficiency and economy.

THE HUBER MANUFACTURING COMPANY

Canadian Office: Arlington and Logan, WINNIPEG, MANITOBA
 Home Office and Factory: MARION, OHIO, U.S.A.

You saw this advertisement in this magazine. Don't forget to say so when writing.