



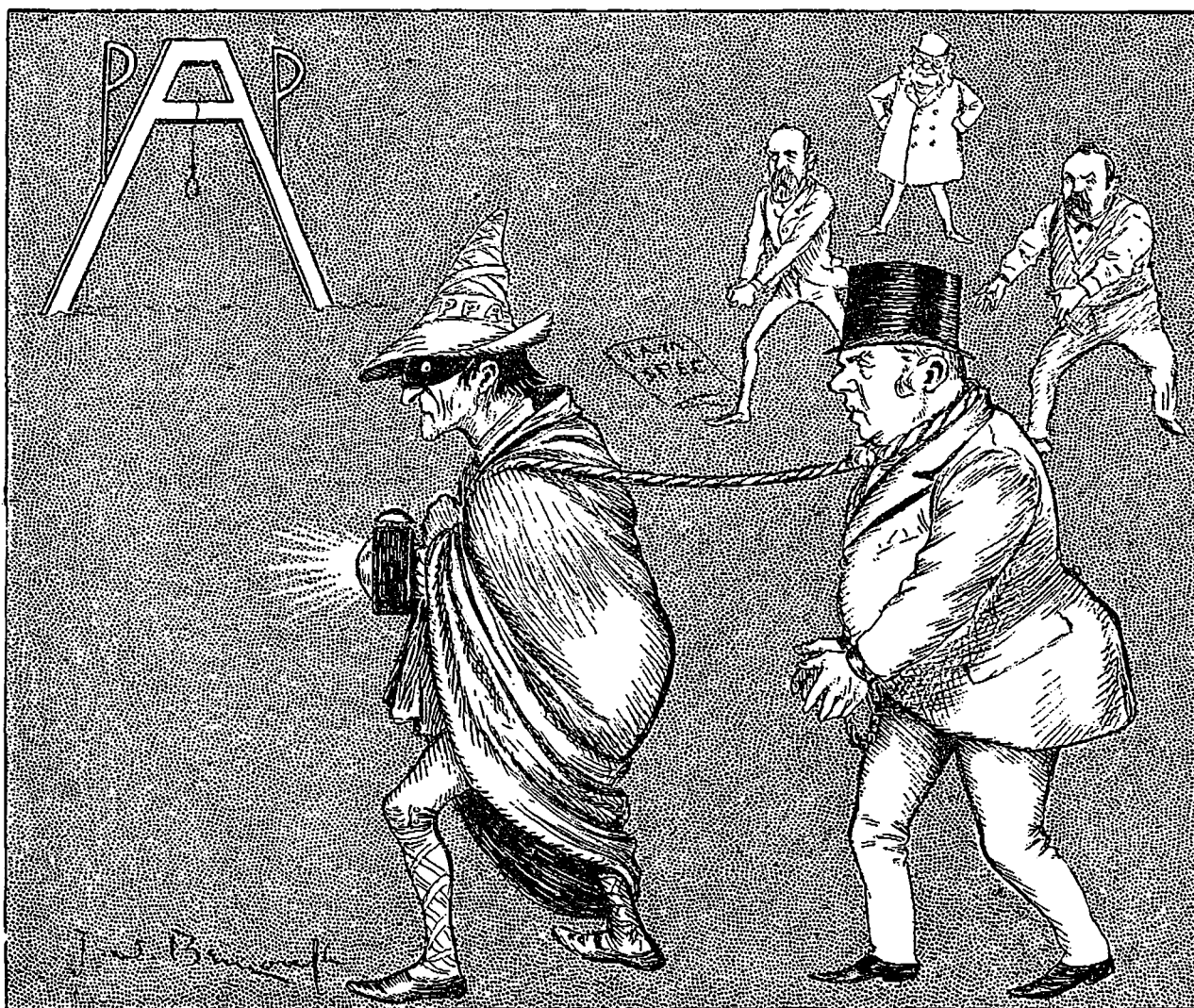
EDITED BY J. W. BENGOUGH

Vol. 41. *Literary and Artistic Contributions are Solicited. Rejected MSS. will be Returned if stamps are enclosed.*

No. 1074

The Unauthorized Reproduction of our Cartoons and Small Cuts is Prohibited in the Dominion.

No. 26.



A MODERN CASE OF HAMAN AND MORDICAI.

The Scaffold was Erected for Mowat, but Thompson may be its First Victim, after all. Now mark the distress of the *Empire* and *Spectator* Editors!