



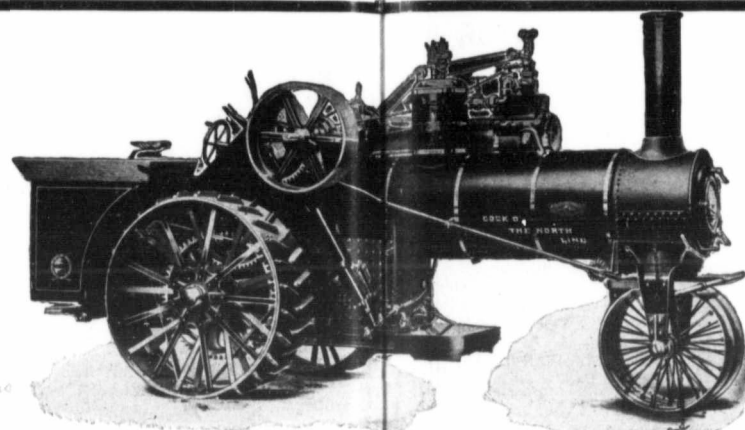
# In The Fall--PLOW DEEP



## Mr. Thresherman and Farmer

Do you realise to what extent your profits are influenced by the power you use? Power in abundance is easily obtained, but if it is got at a ruinous cost--What then? Our line of farm tractors is designed to give you all the power you need at the lowest cost at which power can be supplied. And we certainly "deliver the goods."

### The American-Abell "UNIVERSAL" Farm Motor



This is the 28 H.P. rear mount tricycle **AMERICAN-ABELL** Special plowing Engine—the greatest value in Steam Plow Tractor at work to-day. While it has been specially designed and built for plowing, its capabilities in all kinds of haulage and belt work are unsurpassed. Compare it with anything close in up-to-date Steam Traction. Ask the men who are using it **what it does**, and judge for yourself. **DON'T BUY 'TILL YOU HAVE SEEN IT AND OUR OTHER SPECIALS IN STEAM PLOWING ENGINES.**

## The Twin Wonders

The "**MINNEAPOLIS**" The "**UNIVERSAL**" is a 25 H.P. is the latest in all gas power, and is unsurpassed as an economical, durable and reliable gas engine.

The very best grade of material only is used in the construction of this machine—regardless of cost, steel being used in place of cast iron wherever it is practical.

As a plowing engine, and in every kind of traction and belt service, it has been thoroughly tested in the field with the most gratifying results to a wide circle of practical men who are using it.

Get our descriptive catalogue.

With this engine, one man and 25 gals. of gasoline will plow 18 acres of ordinary stubble in 10 hours. And, without fatigue, it will work all night if called on.

Plowing with horses (figuring a man's labor worth \$2 a day, and the horse feed only while engaged in plowing), costs, per acre, \$1.

With the "**Universal**" (figuring a man at \$3 a day, \$1 a day for lubrication and gasoline at 15 cents a gal.), costs, per acre, 45 cents.

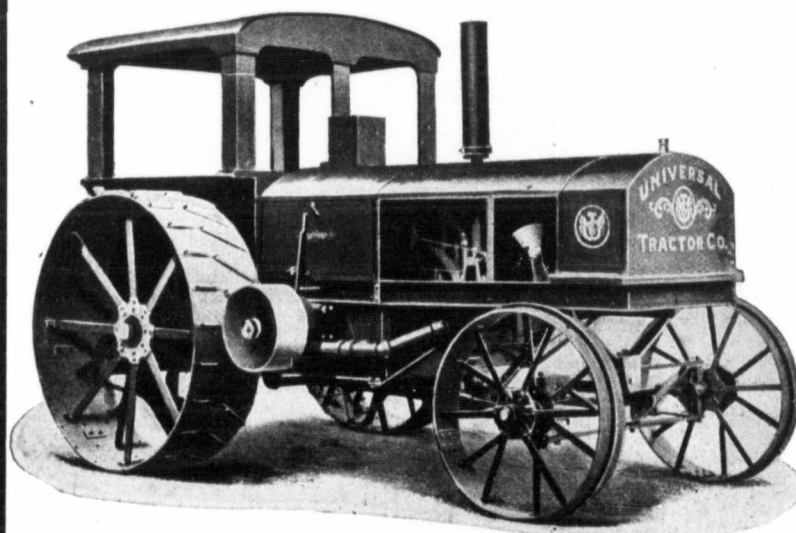
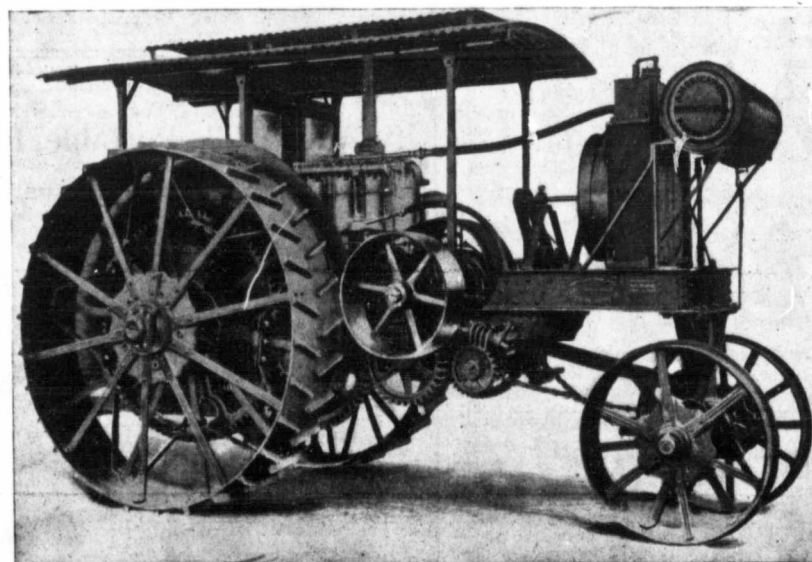
## Are you on the Right Track

to get the **big money** there is in grain growing? You can still make a living and the price of a new suit with the well-worn teams, but the **big money**—the **quick returns** are no longer to be got from horse-power farming.

The great law of the "survival of the fittest" has left the Iron Horse in possession of the field.

Have you seen our Gold Medal Winners?

### The Great 25 H.P. "MINNEAPOLIS" Farm Motor



Our Creed: "We believe that honest goods can be sold to honest people by honest methods."

## American-Abell Engine and Thesher Co., Limited

We represent THE ADVANCE THRESHER CO., BATTLE CREEK, MICH., and THE MINNEAPOLIS THRESHING MACHINE CO., HOPKINS, MINN.

Our Creed: "We believe that honest goods can be sold to honest people by honest methods."

# In Harvest--PLENTY REAP



The  
Luck  
is  
Always  
on the  
Side  
of the  
Best  
Plowman

Get  
to the  
Heart  
of the  
Soil  
as you  
would  
the  
Heart  
of a  
Friend