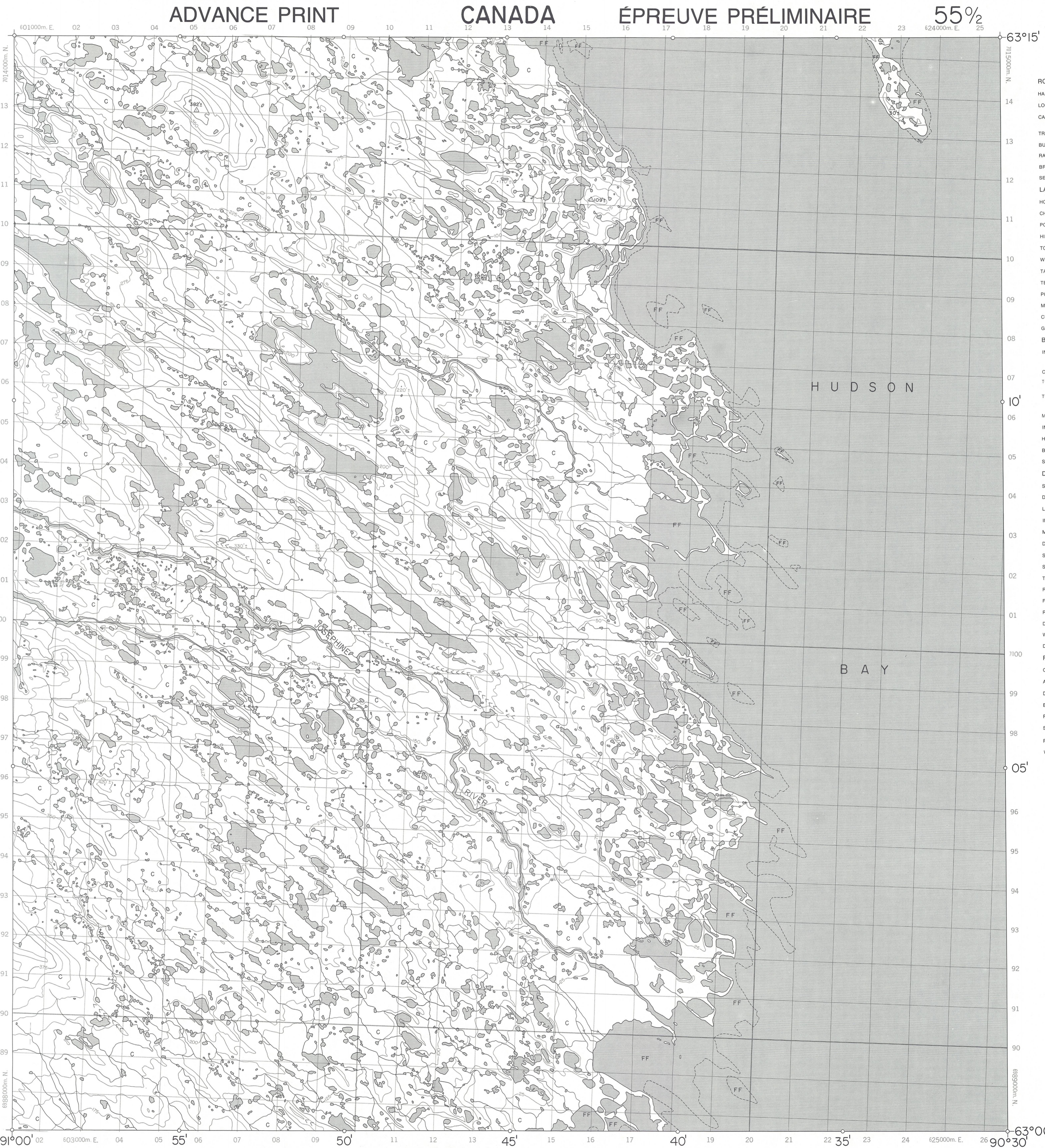


7016000

6986000

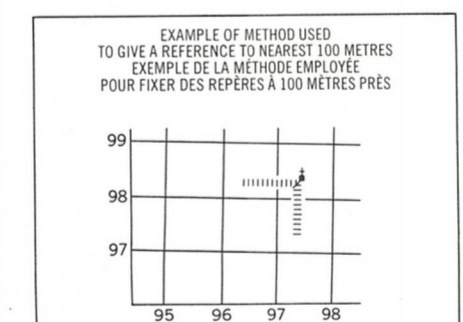
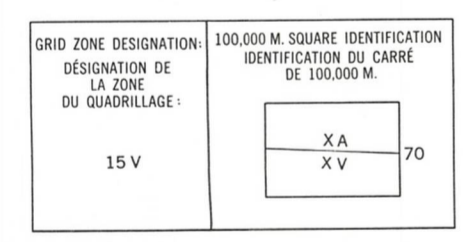
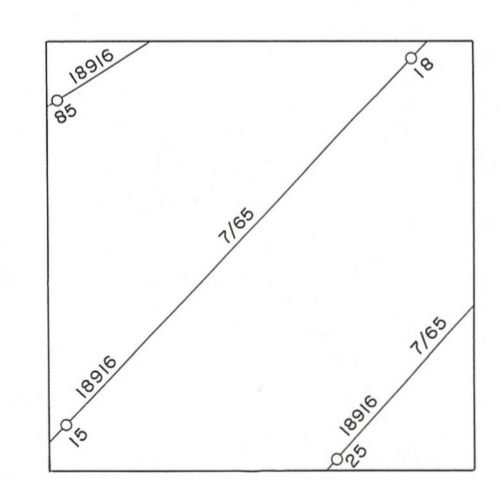


ADVANCE PRINT CANADA ÉPREUVE PRÉLIMINAIRE 55 1/2

Military users, refer to this map as: Références de la carte pour usage militaire: SERIES A701 SÉRIE MAP 55 0/2 CARTE ÉDITION 1 MCE ÉDITION

LEGEND - LÉGENDE

ROADS AND RELATED FEATURES		ROUTES ET OUVRAGES CONNEXES	
HARD SURFACE, ALL WEATHER	SURFACE DURE, TOUTES SAISONS		
LOOSE SURFACE	GRAVIER		
CART TRACK, WINTER ROAD, UNDER CONSTRUCTION	CHEMIN DE TERRE, D'HIVER, EN CONSTRUCTION		
TRAIL, CUTLINE, PORTAGE	SENTIER, PERCEZ, PORTAGE		
BUILT UP AREA	AGGLOMÉRATION		
RAILWAY, SIDING, STATION STOP	CHEMIN DE FER, VOIE D'ÉVITEMENT, GARE, ARRÊT		
BRIDGE	PONT		
SEAPLANE BASE, ANCHORAGE	HYDROAÉROPORT, MOULAGE		
LANDMARK FEATURES		POINTS DE REPÈRE	
HOUSE, BARN	MAISON, GRANGE		
CHURCH, SCHOOL	ÉGLISE, ÉCOLE		
POST OFFICE	BUREAU DE POSTE		
HISTORICAL SITE	LIEU HISTORIQUE		
TOWERS: FIRE, RADIO	TOURS: FEU, RADIO		
WELL, OIL, GAS	PUIXS: PÉTROLE, GAZ		
TANK: OIL, GASOLINE, WATER	RÉSÉROIR: PÉTROLE, ESSENCE, EAU		
TELEPHONE LINE	LIGNE DE TÉLÉPHONIE		
POWER TRANSMISSION LINE	LIGNE DE TRANSPORT D'ÉNERGIE		
MINE	MINE		
CUTTING, EMBANKMENT	TRANCHÉE, REMBLAI		
GRAVEL PIT	FOSSÉ DE GRAVIER		
BOUNDARIES AND CONTROL		FRONTIÈRES ET POINTS DE RÉFÉRENCES	
INTERNATIONAL BOUNDARY MONUMENT	INTERNATIONALE, PROVINCE, BORNE FRONTIÈRE		
COUNTY, DISTRICT	COMTÉ, DISTRICT		
TOWNSHIP, PARISH - SURVEYED	CANTON, PAROISSE - ARPENTÉ		
TOWNSHIP, DLS - SURVEYED	CANTON, DLS - ARPENTÉ		
SECTION CORNERS	SECTION ANGULAIRE		
MUNICIPALITY	MUNICIPALITÉ		
INDIAN RESERVE, PARK, ETC.	RÉSERVE INDIENNE, PARC, ETC.		
HORIZONTAL CONTROL POINT	REPÈRE PLANIMÉTRIQUE		
BENCH MARK	REPÈRE DE NIVELLEMENT		
SPOT ELEVATION, ELEVATION APPROXIMATE	POINT COTE, ÉLEVATION APPROXIMATIVE		
DRAINAGE AND RELATED FEATURES		DRAINAGE ET OUVRAGES CONNEXES	
STREAM, SHORELINE, INDEFINITE	COURS D'EAU, RIVE, IMPRÉCISE		
DIRECTION OF FLOW	DIRECTION DU COURANT		
LAKE, INTERMITTENT	LAC, INTERMITTENT		
INUNDATED, FLOODED LAND	TERRAIN INONDÉ		
MARSH OR SWAMP (WOODED)	MARAIS OU MARECAGE (BOISÉ)		
DRY RIVER BED WITH CHANNELS	LIT DE COURS D'EAU TARI AVEC CHENAUX		
SAND, ABOVE, IN WATER	SABLE, AU DESSUS, DANS L'EAU		
STRING BOG	MARECAGES EN ENFILADE		
TUNDRA PONDS, POLYGONS	TOUNDRAS: ETANGS, SOLS POLYгонаUX		
RAPIDS	RAPIDES		
FORESHORE FLATS	ESTRANS		
ROCK	ROCHE		
DAM	BARRAGE		
WHARF	QUAI		
DITCH	FOSSÉ		
RELIEF FEATURES		RELIEF	
CONTOURS	COURBES DE NIVEAU		
APPROXIMATE CONTOUR	COURBE DE NIVEAU APPROXIMATIVE		
DEPRESSION	COURBE DE CUVETTE		
ESKER	ESKER		
PINGO	PINGO		
SAND, SAND DUNES	SABLE, DUNES		
PALSA BOG	PALSE		
WOODED AREA	RÉGION BOISÉE		



55 O/6	55 O/7	55 O/8
55 O/3	55 O/2	55 O/1
55 J/14	55 J/15	55 J/16

EXAMPLE OF METHOD USED TO OBTAIN REFERENCE TO NEAREST 100 METRES (OBTAINIR LE QUADRILLAGE IMMÉDIATEMENT À GAUCHE DE LA LIGNE)

REFERENCE POINT CHURCH - EGLISE (see above) (cf. ci-dessus)

EASTING: Read number on grid line immediately to left of point.

LONGITUDE EST: Note the number on the top of quadrangle immediately to the right of point.

Estimate north of a square from this line eastward to point.

Estimate the number of divisions of grid east of this line at the top of the quadrangle.

GRID REFERENCE: 55 O/6

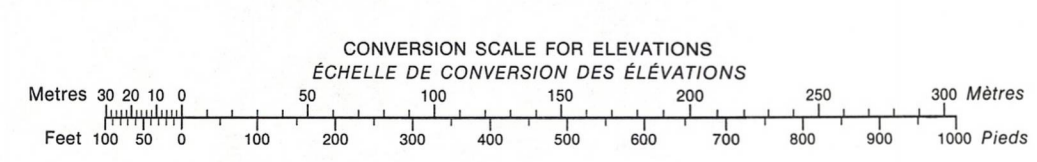
Estimate north of a square from this line westward to point.

Estimate the number of divisions of grid west of this line at the top of the quadrangle.

GRID REFERENCE: 55 J/14

North-south grid reference 55 O/6 west of 55 J/14.

ONE THOUSAND METRE UNIVERSAL TRANSVERSE MERCATOR GRID ZONE 15 QUADRILLAGE DE MILLE MÈTRES UNIVERSAL TRANSVERSE DE MERCATOR



PRODUCED BY SURVEYS AND MAPPING BRANCH, DEPARTMENT OF ENERGY, MINES AND RESOURCES, OTTAWA, 1972, FROM PHOTOGRAPHS TAKEN IN 1965. CONTOUR INTERVAL - - - - - 25 FEET

SCALE 1:50,000 ÉCHELLE 1:25 inches to 1 mile approximately

ÉTABLIE PAR LA DIRECTION DES LEVÉS ET DE LA CARTOGRAPHIE, MINISTÈRE DE L'ÉNERGIE, DES MINES ET DES RESSOURCES, OTTAWA, EN 1972, D'APRÈS DES PHOTOGRAPHIES PRISES EN 1965. ÉQUIDISTANCE DES COURBES - - - - - 25 PIÈDS

55 1/2

EDITION 1