

**MATINEES  
WED & SAT  
BEST SEATS  
25c & 50c**

# GRAND OPERA HOUSE

PRICES NEVER CHANGE

**MATINEES  
WED & SAT  
BEST SEATS  
25c & 50c**



**THE PLAY THAT IS  
FILLED WITH GOOD  
SENSE, GOOD FUN,  
AND GOOD MORALS**

# THE

**FIRST TIME HERE  
AT LESS THAN  
A DOLLAR FIFTY  
SCALE OF PRICES**



**THE COMEDY  
THAT DELIVERS  
THE GOODS**

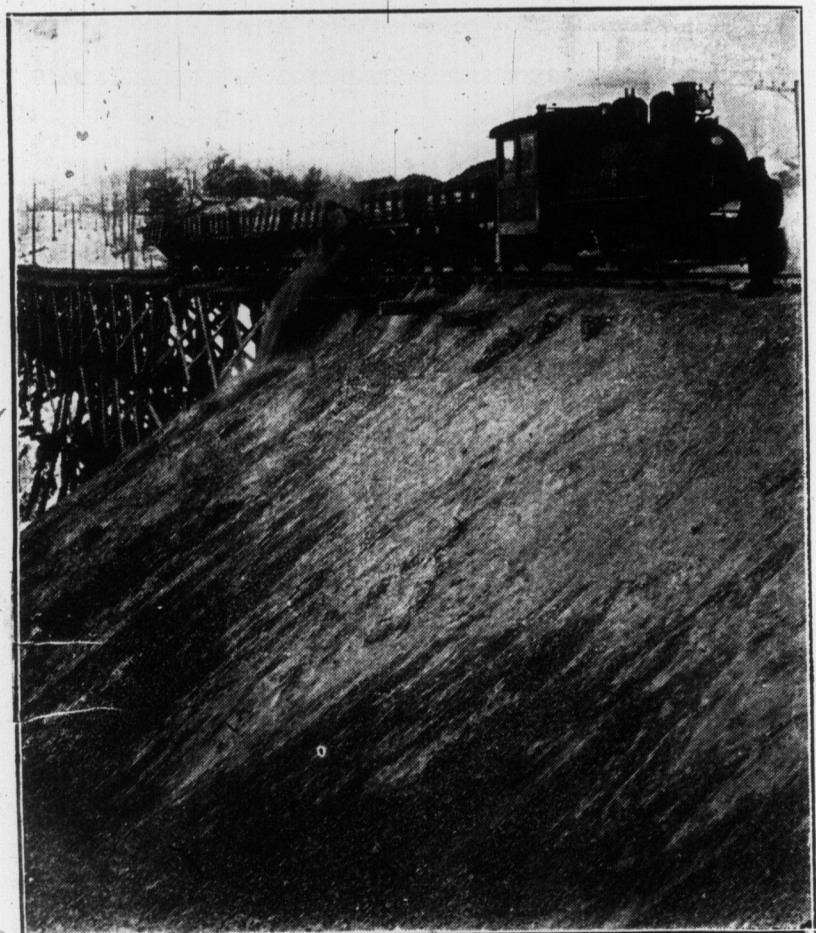
HENRY  
B.  
HARRIS'  
OWN  
COMPANY  
AND  
PRODUCTION

# TRAVELING SALESMAN

BY  
JAMES  
FORBES  
AUTHOR OF  
THE  
CHORUS  
LADY

**IT'S LAUGHS,  
LAUGHS AND  
MORE LAUGHS**

**NEXT WEEK — WM. A. BRADY'S DELIGHTFUL HOME COMEDY "MOTHER" WITH A GREAT CAST AND BIG PRODUCTION — NEXT WEEK**



FILLING IN ST. CLAIR-AVE. FOR THE NEW CIVIC CAR LINE ST. CLAIR-AVE., NEAR SPADINA-ROAD.



MISS KATHLEEN AND MISS AUDREY MARSELLLES, 459 PALMERSTON BOULEVARD.

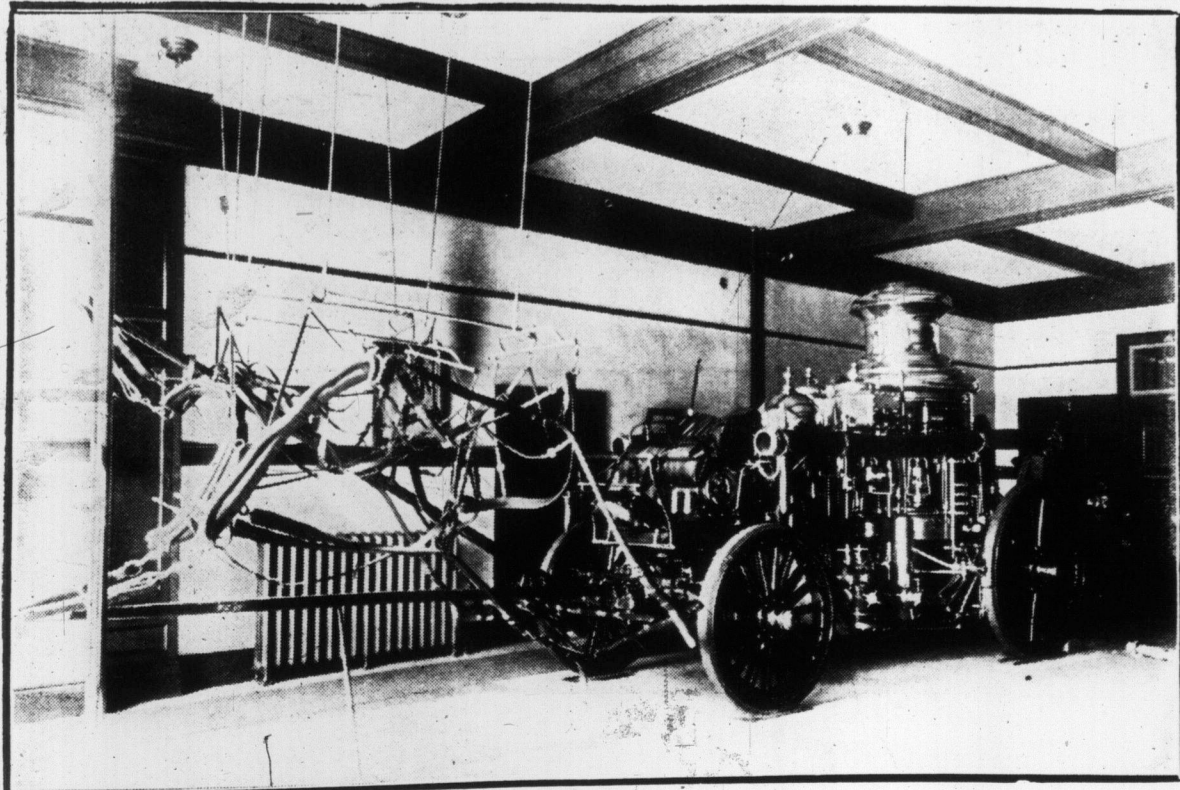
hundred and one things about 'business' and 'links'.  
"When a play is to be produced, the peculiarly striking thoughts must be emphasized to the exclusion of many interesting details, and to do this reality must oftentimes be sacrificed."

**NOTHING EXTRAORDINARY.**

A native of Germany was visiting an American friend in New York, and the latter bethought himself to take his guest on a visit to Niagara Falls.  
The American, accustomed to bursts of wariness and enthusiasm, was not a little astonished to see his Teutonic friend stand and gaze stolidly minute after minute upon that roaring cataract, without evincing the faintest sign of emotion.  
Finally, unable any longer to conceal his chagrin and disappointment, the American turned to his companion and asked: "Don't you think that's a wonderful sight?"  
"Why, that gigantic body of water pouring over that lofty precipice," the German stood for a few seconds longer, until he got that idea digested, then looked up blandly and asked: "Well, 'vot's to hinder it?"—Everybody's Magazine.



THE DAWN OF THE NEW YEAR—A SNAPSHOT OF THE DON VALLEY ON JAN. 1.



NEW ENGINE AT TORONTO FIRE DEPARTMENT HEADQUARTERS.

**SHEP CAMP ON STAGE REALISM.**

Shep Camp, who portrays the character of Bob Blake in "The Traveling Salesman," has this to say upon the subject of realism in plays:  
"Did you ever notice that no one in any profession is ever satisfied with a play about that profession, even tho' the same play makes a tremendous hit with the general theatregoing public?"  
"It's a fact, they never like to see themselves, as it were. Maybe they will like the play, but they will all tell you how much better you could have done it, and that the actor playing such and such a part should not do so and so under the conditions imposed by the story of the play. They never seem to grasp the idea that certain realities must be sacrificed, when the incidents of life are put before conglomerate audiences and crowded into a short space of two hours."  
"If we follow exactly the actions of people characterized the play would run three or four months longer than a Chinese drama does nowadays."  
"Traveling men can always find fault with a play about traveling men. College boys can always tell you what is the trouble with an actor trying to play a college boy. I never saw an actor who liked the character of an actor in a play, and I meet 'drummers' every day who tell me how I should have staged 'The Traveling Salesman,' where it should be changed, and a



THE FAMOUS POKKER GAME IN "THE TRAVELING SALESMAN," THE ATTRACTION AT THE GRAND ALL THIS WEEK.

APART  
\$17,000—  
rooms each  
45¢ per  
H.  
38  
PRO  
GER  
Determin  
to Uni  
Tide S  
Govern  
Practic  
cial at  
VON M  
BERLIN  
Seventy-  
stag elect  
returns in  
not gaini  
fate part  
of which  
this rate  
seats in  
ousted fr  
losing and  
von Post  
secretary  
was the  
The  
fence and  
eight dist  
servatives  
The  
elected-  
cals sever  
Socialists  
lars 1.  
The Cer  
2, and th  
the Nat  
Socialist  
ult of t  
probable  
will have  
now has  
the Pol  
Radicals  
numbers  
lars 11.  
Opp  
It is in  
sition will  
majority  
tests. Th  
held on  
Among  
returned  
Dr. Mue  
Arendt,  
Count v  
Radical  
von Molt  
the Inter  
The  
rube dist  
stronghol  
Prof. Ge  
over the  
The ch  
Socialist  
was the  
to sup-  
er at the  
candida  
tricts.  
Card  
State E  
th  
LOND  
Cardinal  
archbish  
cardinal  
entry in  
afternoon  
with m  
the first  
reform  
Lord M  
Westm  
embassy  
attested  
gatherin  
Huge  
a rousin  
Process  
by the  
was a  
slowly t  
Th  
a be  
29th  
once  
rece  
fees  
as t  
time  
be a