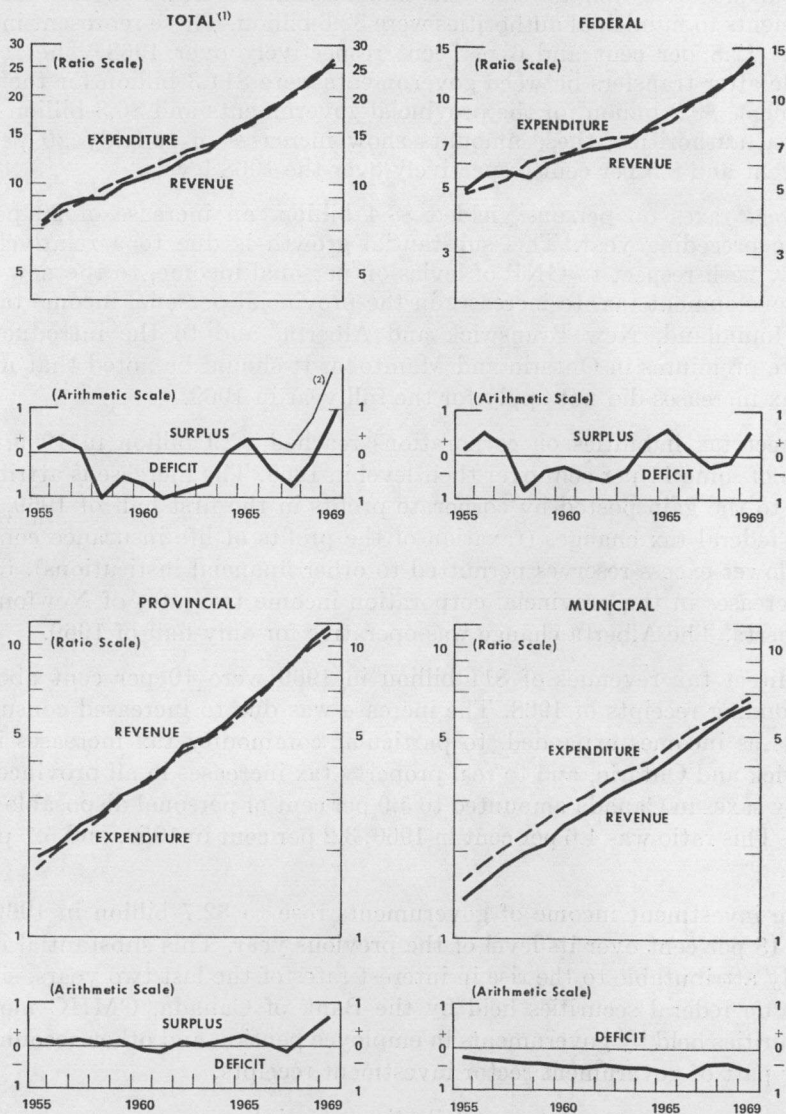


CHART 13
GOVERNMENT REVENUE AND EXPENDITURE
 NATIONAL ACCOUNTS BASIS
 (Billions of Dollars)



Note: 1968 and 1969 — Department of Finance Estimates

(1) Excluding Intergovernmental transfers and Canada and Quebec Pension Plans.

(2) Including Canada and Quebec Pension Plans.