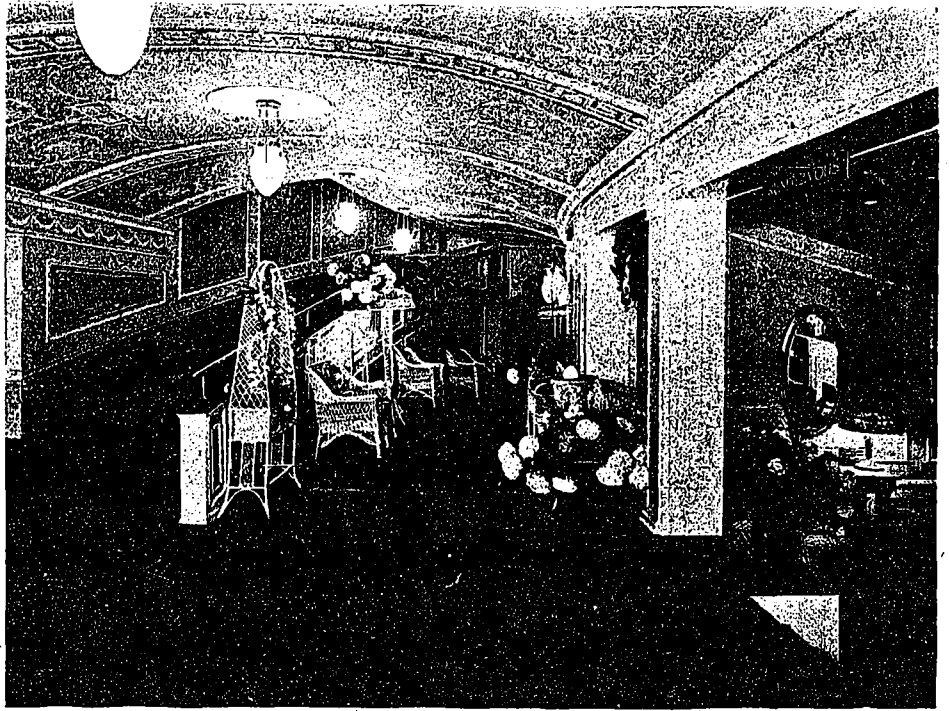


The new Allen Theatre is, therefore, interesting as a successful solution of this problem. The scheme involves a somewhat entirely new idea, and it represents the first building of its kind in Canada as regards certain features of design. The accompanying plans and sections show how seven good sized stores and several spacious offices have been obtained without the loss of a single square foot of seating capacity, at the same time giving a theatre that, for fineness of sight lines and proper acoustics, leaves little to be desired. It both meets the question of low rent and solves the problem of obtaining a large seating capacity.

On entering the theatre you pass from the outer lobby into a spacious foyer off from which are ladies' and gentlemen's retiring rooms and toilets conveniently arranged, also check rooms and manager's office, while in the centre, directly opposite the entrance, is an attractive lounge, or "rendezvous," as it is called. This room is used by parties to meet in, or by people who wish to wait before entering the theatre, rather than to be seated while the feature picture is being shown. This space is luxuriously furnished, as is also the foyer, which gives additional space to patrons who are desirous of waiting for the beginning of a picture in case a film has already been partly run.

The furnishing of these rooms supplies no small part of the decorative scheme, and with such innovations as singing birds, beautiful plants and flowers, and the use of Oriental rugs, affords a charming, as well as a delightful approach to the auditorium itself. The entrance to the theatre proper from this foyer is obtained through archways into the lower portion, and by wide inclines on each side of the foyer to the upper portion. These four points of entrance lead to four separate and distinct portions of the auditorium, so that there is very little distance to be travelled by any one to reach a seat from any of these points. The confusion of people passing in and out constantly, as is usual in a theatre of this kind, is also reduced to a minimum by this arrangement.

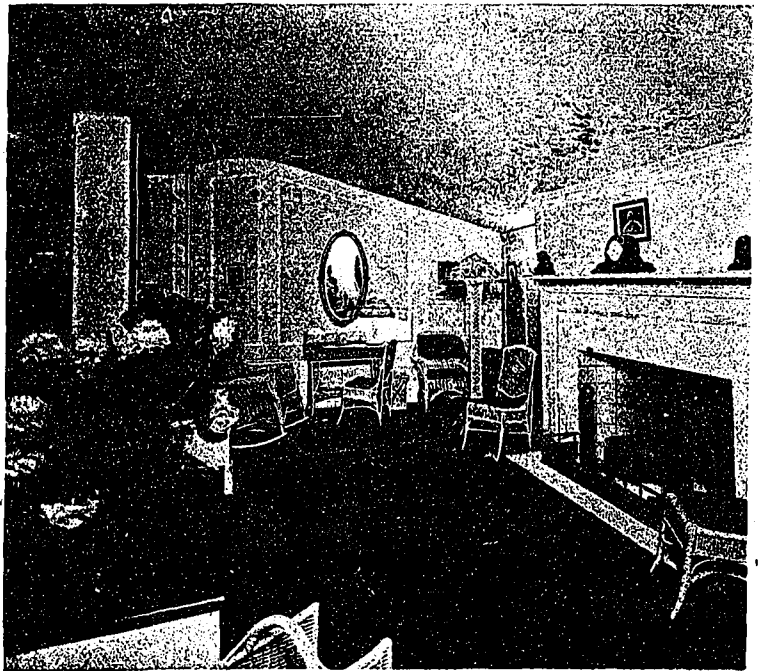
The theatre itself is designed after the



VIEW SHOWING INCLINE OR RAMP, NEW ALLEN THEATRE, TORONTO.

Adams style, which is very decorative, at the same time light and airy, and quite a change from the usual heavy, oppressive ornament that one is accustomed to see in buildings of this type. The amphitheatre arrangement of the seats gives an air of festiveness to the whole that is at once noticeable, as everyone is not only in fine view of the stage, but of each other as well.

The arrangement of the boxes and the loges is attractively done, and the furnishings in these have been carried out in harmony with the balance of the theatre. Although this theatre was not designed for vaudeville or plays, it has been



LOUNGE, NEW ALLEN THEATRE, TORONTO.