

The Adirondack Mountains

are now about the most central of all the great resorts. They have through Pullman sleeping cars from New York, Philadelphia, Boston, Buffalo and Niagara Falls, via the



"AMERICA'S GREATEST RAILROAD"

A night's ride takes you from any of these places to the center of the mountains in time for breakfast next morning.

For a copy of "The Adirondack Mountains and How to Reach Them," which is No. 20 of the New York Central Lines' "Four-Track Series," containing a fine map of the Adirondack Mountains and adjacent Territory, with useful information in regard to hotels, camps, lakes, rivers, etc., send a two-cent stamp to George H. Daniels, Manager, General Advertising Department, Room 34, Grand Central Station, New York.

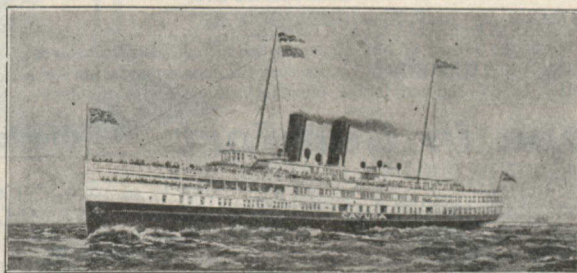
C. F. DALY, Passenger Traffic Manager, NEW YORK

Niagara Navigation Co.

LIMITED

NIAGARA RIVER LINE

6 Trips Daily
(except
Sunday)



Write for Free
Illustrated
Booklet

Buffalo—Niagara Falls—Toronto

Via Lower Niagara River and Lake Ontario

B. W. FOLGER, Manager

TORONTO, CANADA