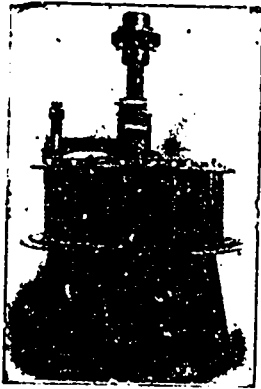


The Samson Turbine



Can be adapted to all water power requirements, and will give the very best results under all conditions.

It is a very strong and durable wheel, and is unequalled for ease of regulation.

Develops more power per inch of diameter than any other wheel, and costs less to install per horse power developed.

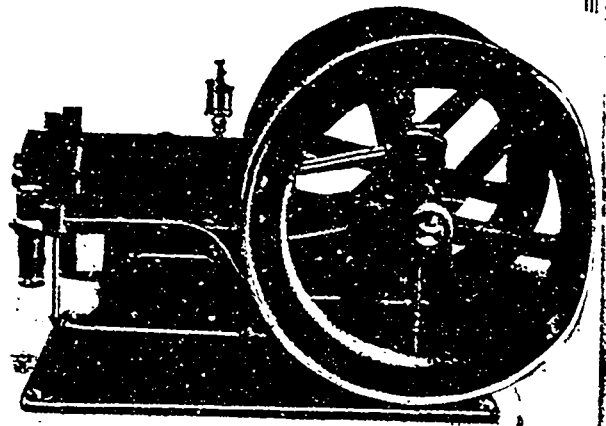
Our catalogue tells all about it—send for a copy.

THE WM. HAMILTON MFG. CO., Limited

350 Reid St.

Peterborough, Ont.

THE FAMOUS McVICKER

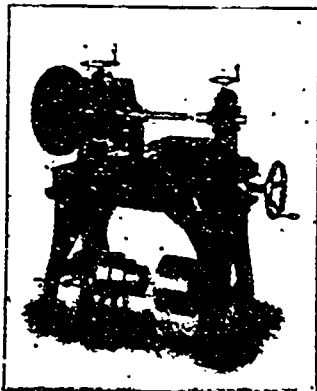


STRENGTH

POWER

RIGIDITY

PRACTICAL



NEW MODEL No. 7—Plain Horizontal Miller

This machine is built to meet the increasing demand for a powerful miller for general manufacturing purposes, and embodies many improvements in power, stability and convenience. It is especially adapted to the manufacture of gun, sewing machine, typewriter and electrical work, bicycle and automobile parts. Write for catalogue. It will pay you.

BECKER-BRAINARD MILLING MACHINE CO.,

HYDE PARK, MASS., U.S.A.

Branch Office: THE BOURSE, PHILADELPHIA, PA.

A. R. WILLIAMS MACHINERY CO., - Toronto, Can.

Canadian Agents

¶ One-third the number of parts.

¶ The only four-cycle engine that will run either way.

¶ The only improvement in gas engines for forty years.

¶ Governor ten times as sensitive as any other.

¶ No gears, cams, eccentrics or trigger work of any kind.

THE
Canadian McVicker Engine Co.
Limited
GALT ONTARIO