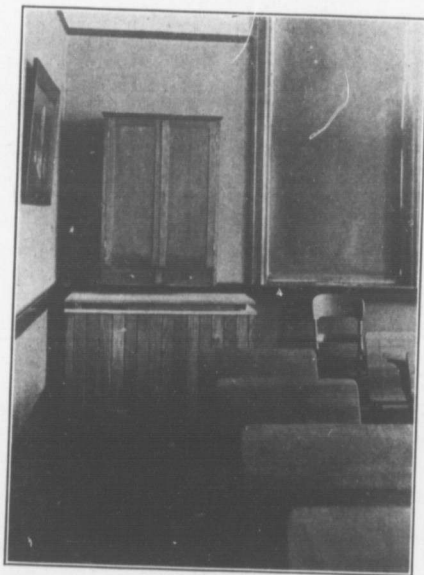


The best method of approach to rural school household science is through the medium of the school lunch. A large number of pupils are forced to take their lunch to school, and the meal, if it can be so-called, is generally of an unsatisfactory character, both as to composition and character. It has been found that the provision of at

in September next. Space will not allow of a description of the method of preparing and serving this lunch but it may be dealt with in a future article.

Some of the agricultural representatives in co-operation with the Public School Inspectors are promoting this work very successfully. Mr. J. W. Stark and Inspector Galbraith, of Peel



Equipment can be stored in corner of schoolroom when not in use.

least one hot dish to supplement the lunch brought from home is beneficial both to health and mental effort and that its serving is quite feasible. In Saskatchewan, there are 150 schools in which a hot dish is served at noon. The movement has just started in this Province with about twenty schools, but it is expected that a much larger number of schools will be engaged in this work on the opening of the schools

County, offer an example. At the forthcoming school fair, an oil stove for the use of the school and a collection of books on household science are among the prizes.

The connection between the rural home and the rural school needs to be strengthened for the sake of both, and there is no better means of doing this than by the co-operation of trustees,

(Continued on page 520)