

GRIMSBY AND WINONA FRUIT GROWERS—II.

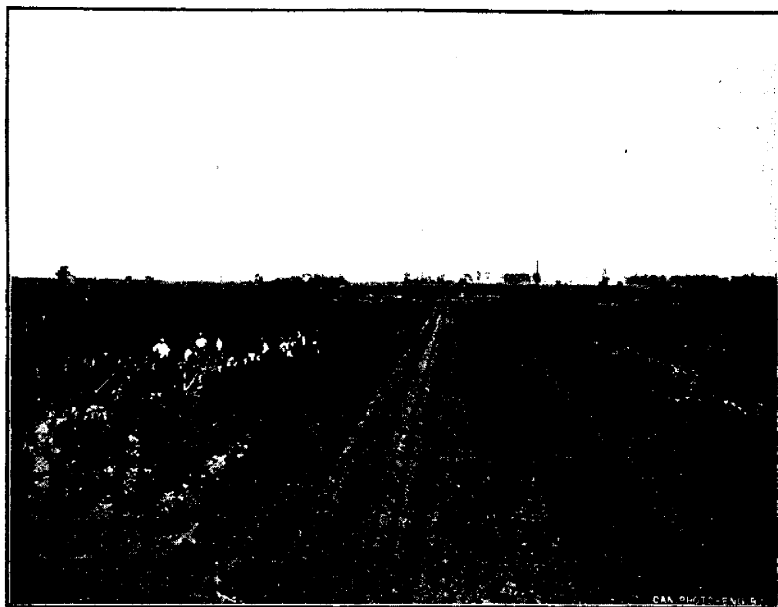


FIG. 1088.—MR. CARPENTER'S VINEYARD.

which date the amount shipped has increased year by year.

Their farm consists of about 175 acres, well stocked with vineyards, or-

chards and nursery stock. A great variety of fruit¹ is grown, including peaches, pears, plums, grapes, quinces, apples, cherries, raspberries, blackber-



FIG. 1089.—BASKET FACTORY, GRIMSBY.