

GEORGETOWN

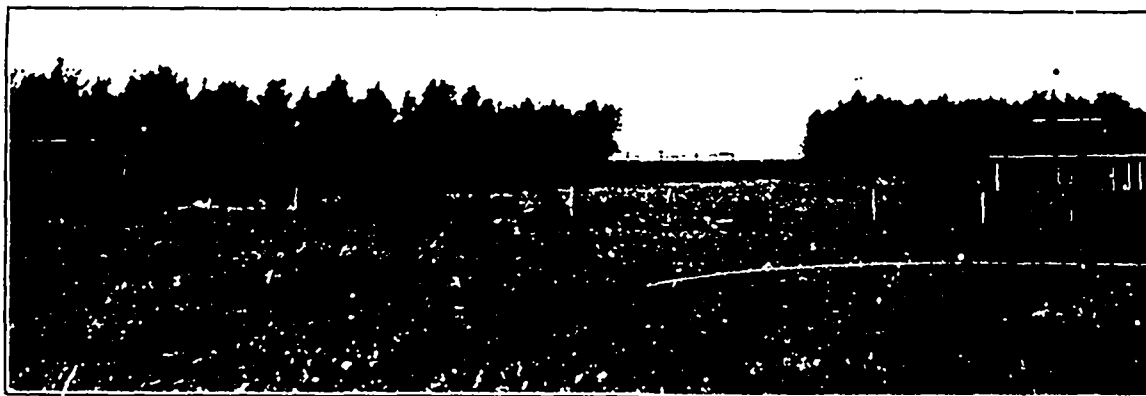
G EORGETOWN, population 1,200, the county town of King's County, is picturesquely situated on Cardigan Bay, into which flow the Cardigan, Montague, and Brudenell Rivers. The Harbor is one of the finest in the Province, being open to navigation practically the year round, the Government ice-breakers, Minto and Stanley, maintaining an almost uninterrupted service with Pictou throughout the winter after the ports of Charlottetown and Summerside have been closed. In summer steamers ply regularly between this port and Montague, Lower Montague, Pictou, Halifax, and the Magdalen Islands. The town is prettily laid off, the streets being at right angles and parallel. Georgetown is the seat of the County Court of King's County, and has an excellent Court House and jail. There are several general stores, the leading firms being Messrs. W. W. Jenkins and A. A. McDonald & Bros. Among the industries are the foundry of Mr. Herbert Parker, and the Eastern Canneries, which packs large quantities of lobsters taken in adjacent waters. The

is the village of Crapaud, having several stores, including those of Messrs. D. McLean, R. Cameron, and O. B. Wadman. In Victoria and Crapaud there are Methodist, Presbyterian, and Anglican Churches, also two fine graded schools.

§ § §

HUNTER RIVER

H UNTER RIVER is a pretty little village on the Prince Edward Island Railway, about 20 miles from Charlottetown, or, across country by road, about fifteen miles. It has a population of between four and five hundred. There are two churches, Presbyterian and Methodist, a Public Hall, an excellent School, a branch of the Royal Bank of Canada and a hotel. It is a favorite summer resort, there being excellent fishing in the vicinity. There are three large general stores owned respectively by Messrs Noy, Holman, Gillis, Limited, D. M. McLeod and George McGuigan.



Typical Fox Ranch

splendid facilities for boating, bathing, and fishing, the restful surroundings, the bracing sea breezes, and the excellent accommodation afforded in the hotels and private boarding houses make Georgetown a favorite summer resort, and yearly increasing numbers of tourists spend their holidays there. There are four churches, Presbyterian, Anglican, Baptist and Catholic; also a fine graded school.

§ § §

VICTORIA

V ICTORIA is one of the most important harbors on the south coast of the Island and is indeed the only harbor between Summerside and Charlottetown. It is the shipping port for one of the richest agricultural sections of the Province, including Crapaud, Tryon, Hampton, and Desable. Victoria has a population of about 400. There are several fine stores, the largest being those of Wright Bros. and C. D. Howatt. Considerable produce is being shipped from this port. About a mile and a half north of Victoria

B GRAHAM ROGERS; born Alberton, P. E. I., July 25, 1893; son of Charles R. Rogers, Summerside, and grandson of present Lieutenant Governor. Educated Summerside High School; for several years clerk in Bank of New Brunswick, Summerside.



B. Graham Rogers

Has been actively engaged in fox business for past three years. Interested in a number of fox companies; Secretary Treasurer Canada Fur Farms, Limited.; Secretary-Treasurer Huntly Silver Fox Co., Ltd. Church, Presbyterian; Politics, Liberal; Member of Masonic and Oddfellows Lodges.