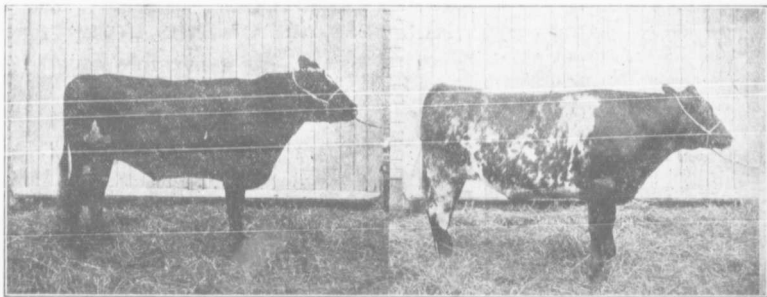
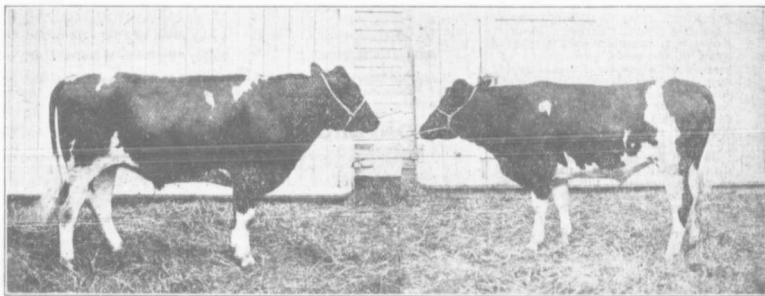


No. 1.—PRIME STEER—MARKET TOPPER.



No. 2.—CHOICE STEER. The photograph hardly does this fellow justice.

No. 3.—GOOD STEER. The photograph shows this steer to be better than he really is.



No. 4.—MEDIUM STEER.

No. 5.—COMMON ROUGH STEER.

### *Market Grades of Fat Cattle*

The above photographs represent the market grades of fat steers as selected by experts at Chicago and exhibited by the Illinois Experiment Station. See article page 516 last issue. Cuts kindly loaned by "The National Stockman and Farmer," Pittsburg, Pa.