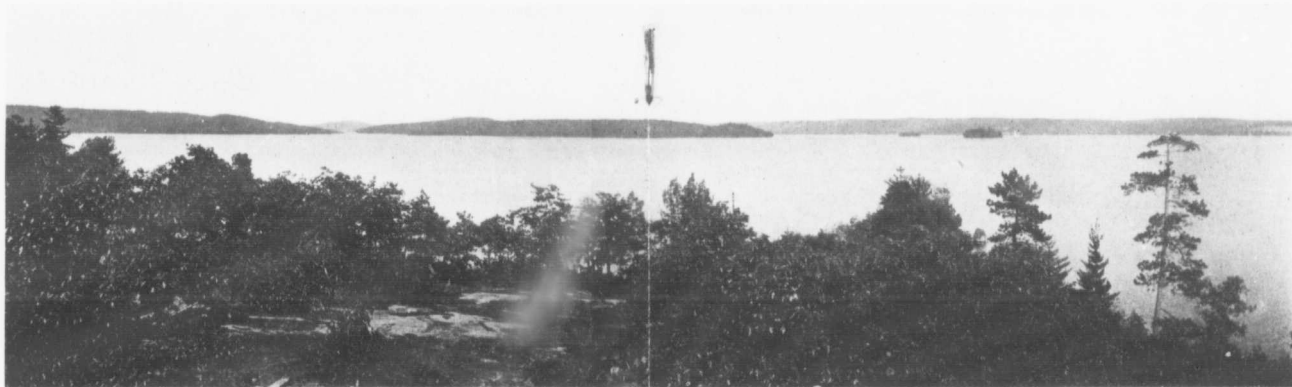


CLOVELLY
the Beautiful

CLOVELLY
the Beautiful



COTTAGE SITES AT CLOVELLY



15 LB. TROUT CAUGHT
NEAR CLOVELLY

CLOVELLY THE BEAUTIFUL

A gentleman, familiar with all the beauty spots of the Lake-of-Bays, visited CLOVELLY for the first time last summer, and said **"I must take off my hat to this, as the grandest view on the whole Lake."** It certainly does command the most enchanting view of the Lake and its many beautiful islands, and is in every respect an ideal spot for a summer cottager.

The elevation of the Lake-of-Bays is over one thousand feet above sea level, and is three hundred feet higher than the lower Muskoka Lakes, the atmosphere is in consequence exceptionally clear and bracing.



A SHADY WALK