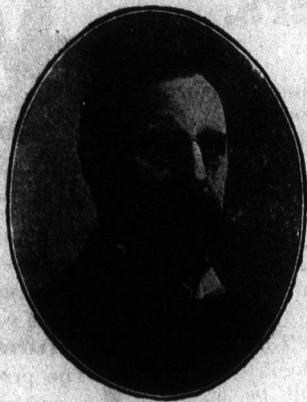


If You Farm for Profit—you need one of my scales

Only my scales are the one Canadian scale that has made good with the Canadian farmer on a straight business basis.



Manson Campbell, President

I Will Make Price Right and Terms very easy—

You can't farm right without a scale; and you can't find a scale that is equal to those I make.

MANSON CAMPBELL
President

EVERY Chatham Pitless Scale is sold with a Government Inspection Certificate that warrants its accuracy. There is no extra charge for this warranty, signed by a resident Government Inspector, who tests every scale we make before it leaves the factory.

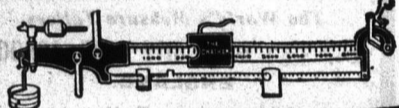
This Scale is COMPLETE

Any other scale comes to you as a few parts with a huge blue print, showing how you can build the rest of it; and you have to build it, too, before you do any weighing. This Chatham Pitless Scale is absolutely complete, built of heavy steel, staunchly bolted together, easily erected, ready for use in a few hours. It stands solidly on its broad steel feet, clear above ground, needing no fixed foundations. Move it readily anywhere. You cannot do that with a pit scale.

Can't Get Out of Order

No check rods, no frail parts to get out of order. Compound beam, finely finished, fully tested, shows full tare on lower section,—easily read, no chance of error. Poise on top beam runs on roller bearings; notches lock the beam by a touch at each 200 lbs. Odd weights shown by small poise on lower beam. Weighs with absolute, warranted accuracy up to FIVE FULL TONS—ten thousand pounds. Nothing about it to go wrong—built so well, tested so carefully.

FULL CAPACITY COMPOUND BEAM



It Can't Wear Out Because It's Steel

CHATHAM 5-Ton Pitless Scale

Big Enough for Any Scale Use

The Chatham's Platform is 8x14 feet—ample room for big load of hay, six fat steers, twelve hogs, etc. Platform can't sag, won't wobble, won't get sprung. Whole outfit built so it will last a lifetime and be good every minute. Sold for a fair price, on easy terms, and fully warranted in every way.

Your Farm Needs Such a Scale

You ought to weigh all you buy, all you sell; ought to weigh your stock regularly; ought to keep track of your farm's yield—be a BUSINESS farmer. This scale makes it easy to do all this, and thus save its cost to you over and over—because you can't cheat yourself, nor can you be cheated with this on your farm.

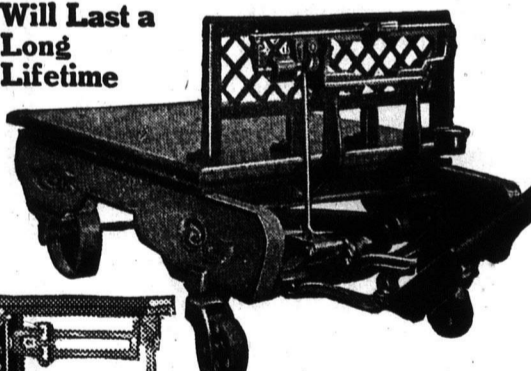
CHATHAM PORTABLE BARN SCALE

is the handiest truck scale built,—compact, easily moved, readily turned short (front wheels and pole are swivelled). Certified by attached Government Inspection Certificate to be absolutely accurate and well-made. Will weigh up to 2,000 lbs. with positive certainty. The Chatham levers are solid castings, extra staunch, can't spring a bit, strong enough to carry TWO tons. Main frame all one-piece solid casting. Bearings self-aligning, whole pivot rests on bearing loop,—so scale must weigh right even if not standing level. Chatham drop-lever principle spares weighing parts the jar of loads, thus bearings stay sharp fifty years or even more.

The Scale Every Farm Needs

Weights Up To 2,000 Lbs. Accurately

Will Last a Long Lifetime



The CHATHAM Portable Platform Scale

Very handy on any farm, specially so on dairy farm. Weighs accurately to 1,000 lbs. Has Double Brass Beam,—no extra charge for this. Strongly built, finely finished. Government inspection warrant attached to each scale. Freight prepaid.

Send for Description, Prices, Etc., of All Our Scales

Lowest Priced 1,000 lb. Scale in the World

NOTICE TO DEALERS

We want dealers to handle our products wherever we are not already represented, and offer exclusive privileges in each place. We are running a large advertising campaign and all orders received by us direct are referred to the dealer from whose territory they come. If you are not selling our products, write us for territory and terms.

GRAY-CAMPBELL Ltd. of Moosejaw

Western Canada Sales Agents for The Wm. Gray & Sons Co. Ltd. and The Manson Campbell Co. Ltd. of Chatham, Ontario

Distributing Warehouses at — BRANDON SASKATOON CALGARY WINNIPEG MOOSEJAW

Makes Kitchen Work Easy And Pays For Itself Too

Look at it in the Picture

Getting dinner—or any meal—takes only half as long when you have this Cabinet in your kitchen. Everything is so handy that cookery is a pleasure instead of drudgery. There's far less mess to clean up afterward—it's so easy to keep the kitchen tidy—and the cook saves so many steps. Compact, sensible, and work-saving.

Saves Room and Time

Take and try it in your kitchen,—see the work it does away with, the time it saves, the bother it puts an end to—see how sensibly planned, how excellently built, how well worth its small cost it actually is. Indeed, you will be well satisfied if you buy a Chatham Kitchen Cabinet. It is a most practical convenience.

Take it on trial—Pay for it a little at a time

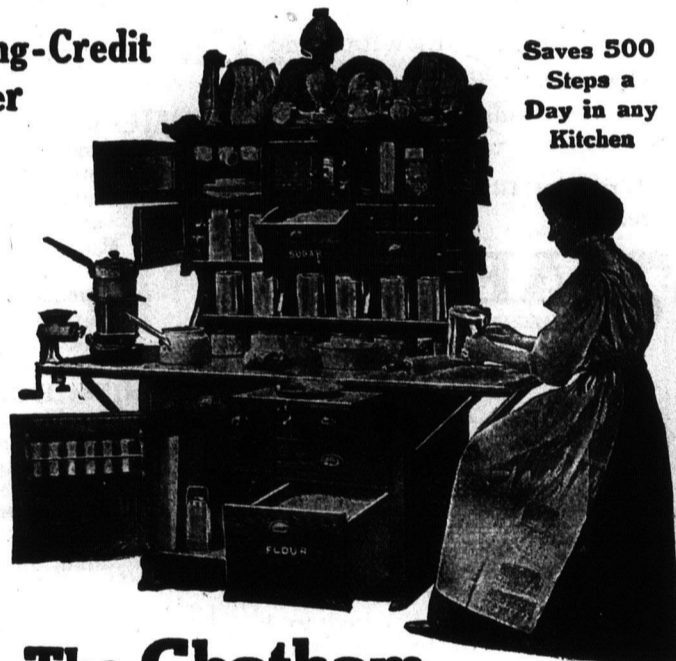
Let Me Send You One On Trial

You can pay for the Chatham Kitchen Cabinet a little at a time,—stretch the payments over many months—so it buys itself while you use it. After it has been a week in your kitchen you will wonder how you ever got on without it. This Cabinet actually is, and I GUARANTEE it to be, better, more compact and more labor-saving in design than any other made. It costs less. It is more complete, more convenient, built better—a great deal better. The wood-work is the finest selected Canadian chestnut, beautifully finished in rich, lustrous golden-brown. The bakeboards, drawers, flour-bin, are snow-white basswood—the shelves, hard, clean maple—knobs, handles, catches, heavy red copper—every part the best material money can buy.

Get My Long-Credit Offer

The drop-leaves (they'll hold a heavy man's weight) just double the table top's area. Nothing is in the way,—nothing opens on the table's level. The whole top is polished metal,—sanitary, clean, water-proof. All the fronts of drawers, doors and bins overlap,—that makes them dust-proof, fly-proof, CLEAN. All the inside parts are finished satin-smooth,—not a crevice nor a seam to harbor dirt or insects. The flour-bin (that compartment lowest down) holds 75 pounds, has a curved solid-metal bottom, and glides in and out at a touch, on double roller ball-bearings. Every drawer shuts TIGHT, but never can stick. Every bin slides in and out EASILY. The whole Cabinet is mouse-proof.

Saves 500 Steps a Day in any Kitchen

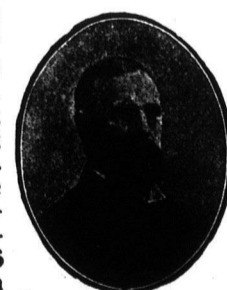


The Chatham Kitchen Cabinet

Saves endless bother and clutter

It's Very Practical

It couldn't be made more complete. Large enclosed closets for heavy utensils; plenty of shelves; shelf rack; two big drawers—17½ ins. wide, 5 inches deep; three small drawers; three cupboards; two big bins—self-moving; the whole thing 6 feet high, and mounted on double-acting rotary castors—easy to move around. Top is made of extra-heavy, polished zinc that will wear for years and be easy to keep clean all the while. Six aluminized canisters supplied free with Cabinet.



MANSON CAMPBELL
President

Fully Guaranteed!

There are no out-of-the-way cubby-holes around a Chatham Kitchen Cabinet; but there IS a handy, easy-to-get-at place for everything that is used in getting a meal ready,—flour, sugar, salt, coffee, tea, spices, package food supplies, knives, spoons, kettles, bread-pans, etc., etc. Let me send you a book that illustrates and describes the Cabinet; or send me your order for it on trial, with my special credit terms and a guarantee that you will be wholly satisfied with it.

Temporary Offices:
500 Jessie Ave., Winnipeg