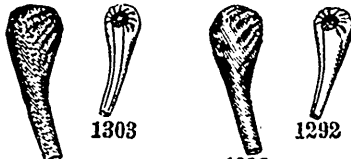


ON this page is illustrated an Assortment of Patterns for LADIES' AND MISSES'

...SLEEVES...

which many will no doubt be pleased to inspect. The patterns can be had in the Sizes mentioned, from Ourselves or from Agents for the Sale of our Patterns. In ordering please specify the Numbers and Sizes desired.

THE BUTTERICK PUBLISHING CO.
(LIMITED),
or 7 to 17 W. 13th Street, New York.



1303
Ladies' Two-Seam Leg-o'-Mutton Sleeve (For Jackets, Coats, etc.): 7 sizes.
Arm meas., 10 to 16 ins.
Any size, 5d. or 10 cents.

1292
Ladies' One-Seam Leg-o'-Mutton Sleeve (For Jackets, Coats, etc.): 7 sizes.
Arm meas., 10 to 16 ins.
Any size, 5d. or 10 cents.



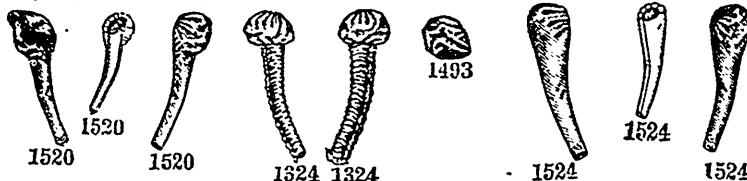
1364
Ladies' Two-Seam Sleeve, Laid at the Top in Two Box-Platts Between Two Side-Platts: 7 sizes.
Arm meas., 10 to 16 ins.
Any size, 5d. or 10 cts.

1282
Ladies' One-Seam Sleeve (To be Gathered or Platted at the Top): 7 sizes.
Arm meas., 10 to 16 ins.
Any size, 5d. or 10 cts.

1448
Ladies' Two-Seam Sleeve, Laid in Three Box-Platts at the Top: 7 sizes.
Arm meas., 10 to 16 ins.
Any size, 5d. or 10 cts.

1517
Ladies' Tucked Leg-o'-Mutton Dress Sleeve (To be Finished Plain or in Venetian Points or with a Cuff): 7 sizes.
Arm measures, 10 to 16 inches.
Any size, 5d. or 10 cents.

1517
Ladies' Tucked Leg-o'-Mutton Dress Sleeve (To be Finished Plain or in Venetian Points or with a Cuff): 7 sizes.
Arm measures, 10 to 16 inches.
Any size, 5d. or 10 cents.



1520
Ladies' Two-Seam Dress Sleeve (To be Made With or Without the Cap and with the Wrist Plain or Fancy): 7 sizes.
Arm meas., 10 to 16 ins.
Any size, 5d. or 10 cts.

1520
Ladies' One-Seam Mousquetaire Dress Sleeve: 5 sizes.
Arm measures, 10 to 14 inches.
Any size, 5d. or 10 cents.

1524
Ladies' Draped Puff Dress Sleeve: 5 sizes.
Arm measures, 10 to 14 inches.
Any size, 5d. or 5 cents.

1524
Ladies' One-Seam Dress Sleeve (To be Laid in Five Box-Platts or Gathered at the Top and Made With or Without Fitted Lining): 7 sizes.
Arm measures, 10 to 16 inches.
Any size, 5d. or 10 cents.

1524
Ladies' One-Seam Dress Sleeve (To be Laid in Five Box-Platts or Gathered at the Top and Made With or Without Fitted Lining): 7 sizes.
Arm measures, 10 to 16 inches.
Any size, 5d. or 10 cents.



1532
Ladies' Two-Seam Dress Sleeve (To be Gathered or Box-Platted at the Top and Made With or Without Fitted Lining): 7 sizes. Ages, 4 to 16 years. Any size, 5d. or 10 cents.

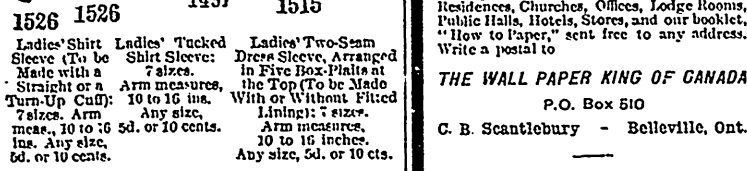
1332
Ladies' One-Seam Dress Sleeve (To be Gathered or Box-Platted at the Top and Made With or Without Fitted Lining): 7 sizes. Ages, 4 to 16 years. Any size, 5d. or 10 cents.

1532
Ladies' One-Seam Dress Sleeve (To be Gathered or Box-Platted at the Top and Made With or Without Fitted Lining): 7 sizes. Ages, 4 to 16 years. Any size, 5d. or 10 cents.

1474
Misses' and Girls' Two-Seam Leg-o'-Mutton Dress Sleeve, in Mousquetaire Style A above the Elbow: 5 sizes. Ages, 8 to 16 years. Any size, 5d. or 10 cents.

1474
Misses' and Girls' Two-Seam Leg-o'-Mutton Dress Sleeve, in Mousquetaire Style A above the Elbow: 5 sizes. Ages, 8 to 16 years. Any size, 5d. or 10 cents.

1474
Misses' and Girls' Two-Seam Leg-o'-Mutton Dress Sleeve, in Mousquetaire Style A above the Elbow: 5 sizes. Ages, 8 to 16 years. Any size, 5d. or 10 cents.



1526
Ladies' Shirt Sleeve (To be Made With or Without a Straight or Turn-Up Cuff): 7 sizes. Arm meas., 10 to 16 ins. Any size, 5d. or 10 cents.

1526
Ladies' Tucked Sleeve (To be Made With or Without a Straight or Turn-Up Cuff): 7 sizes. Arm meas., 10 to 16 ins. Any size, 5d. or 10 cents.

1491
Ladies' Two-Seam Dress Sleeve, Arranged in Five Box-Platts at the Top (To be Made With or Without Fitted Lining): 7 sizes. Arm meas., 10 to 16 ins. Any size, 5d. or 10 cts.

1515
Ladies' Two-Seam Dress Sleeve, Arranged in Five Box-Platts at the Top (To be Made With or Without Fitted Lining): 7 sizes. Arm meas., 10 to 16 ins. Any size, 5d. or 10 cts.

1465
Ladies' Dress Sleeve, with Puff and Cap (To be Made Smooth or in Mousquetaire Fashion and With or Without the Cap): 5 sizes. Arm measures, 10 to 14 inches. Any size, 5d. or 10 cents.

1465
Ladies' Dress Sleeve, with Puff and Cap (To be Made Smooth or in Mousquetaire Fashion and With or Without the Cap): 5 sizes. Arm measures, 10 to 14 inches. Any size, 5d. or 10 cents.

Ask your friends if they take THE DELINEATOR. If they do not, show them this number and ask them if they can afford to be without it.

Special Notice!

ADDRESSED TO
Readers of Advertisements

...IN...

THE DELINEATOR.

IN THIS Notice we wish to Advertise the Fact that it is our Purpose to Accept, for Insertion in the Advertising Columns of THE DELINEATOR, Advertisements of RELIABLE PARTIES ONLY. It is our Belief that all the Advertisements contained in this Number of the Magazine are Inserted in Good Faith and by Responsible Persons. If, however, Readers of THE DELINEATOR find that any Advertisement or Advertisements herein are Prepared with a View to Deceive, or are Inserted by Parties whose Promises are not Fulfilled when applied to, we shall take it as a Great Favor if such Readers will Promptly Notify Us. Honest Advertisers, our Readers and Ourselves derive advantage from working in cooperation to Exclude Everything from the Advertising Columns of the Publication which is in any way Questionable. Our Motto for this Department of THE DELINEATOR is, HONEST ADVERTISING BY HONEST PEOPLE—that is to say, the Advertising Columns of THE DELINEATOR are intended to be on the same High Plane, and to Convey Equally Correct Information, with the other Departments of the Magazine.

The Butterick Publishing Co.

(Limited).



ALL HAVE PROTECTED CORK CLASPS.

Prepare for Christmas

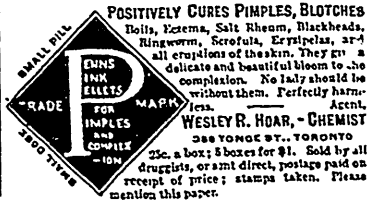
Sample books of Choice Wall Paper for Residences, Churches, Offices, Lodge Rooms, Public Halls, Hotels, Stores, and our booklet, "How to Paper," sent free to any address. Write a postal to

THE WALL PAPER KING OF CANADA

P.O. Box 510

C. B. Scantlebury - Belleville, Ont.

Mention what prices you expect to pay; the rooms you wish to paper and where you saw this advertisement.
We pay express charges.



FREE TO LADIES.

We will give one lady in each town or village a full sized case of LUX SOAP, the only Toilet article in the world that will develop the bust or any part of the female form, remove wrinkles, etc. Write to-day for Z. G. M. WIGGINS, 112 West 32d Street, New York.