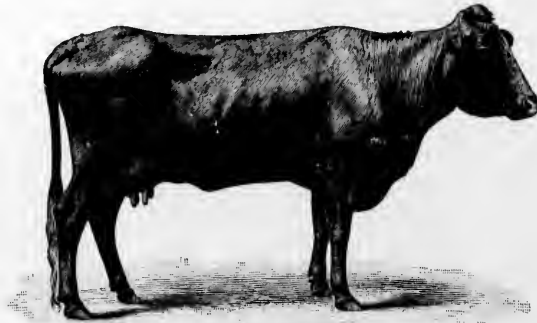
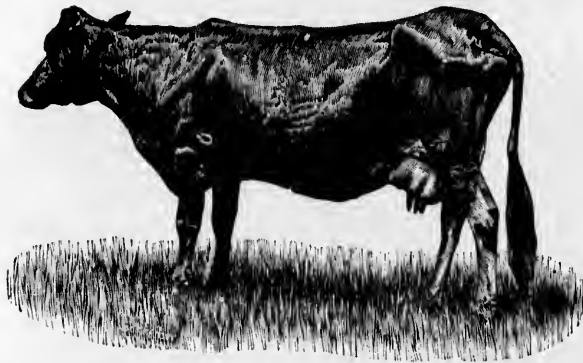


The third, "Olive," a half-bred Guernsey, 800 pounds in weight, gave butter costing  $11\frac{1}{2}$  cents: her group cost  $12\frac{1}{2}$  cents.



OLIVE.

"Dora," the fourth, is a Jersey of 875 lbs. The group's butter, 10 cents Dora's,  $9\frac{1}{2}$  cents.



DORA.

These figures are enough to show how important it is for the farmer to keep cows of good milk-type, able to yield good milk at a reasonable cost for food. Let us suppose then, for a moment, the case of a farmer whose cows are all of the first type; his dairy-work would be carried on at a loss with butter at the price it is at present. Contrariwise, if we can find a farmer whose cows are all of the latter type, we can assert without fear that his dairy work would result in paying him well.