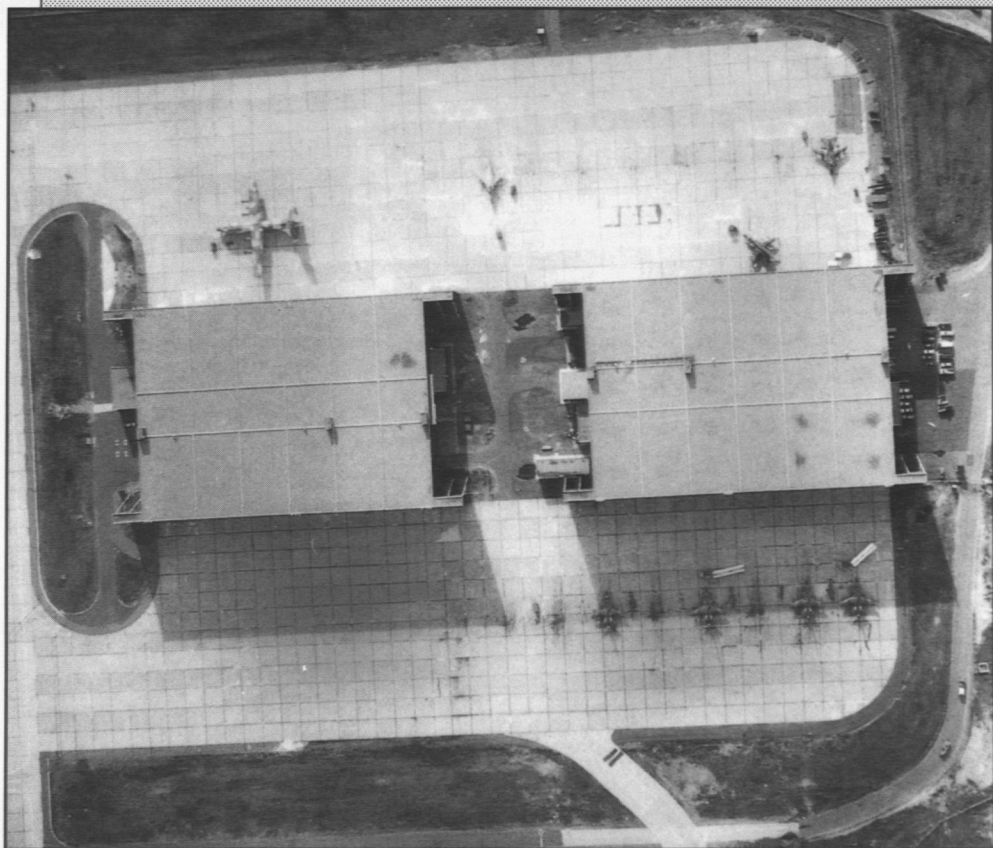


Figure 15 Daytime Panchromatic Aerial Photography and Nighttime Thermal Infrared



The two systems provide complementary overhead imagery. The aerial photograph (above) was acquired about six hours after the thermal image (next page). The thermal image shows warm vehicles and aircraft, warm buildings and buried steamlines, and warm spots left on the tarmac

Vertical aerial photography is most suited to acquiring coverage for **areas**, rather than individual **objects** (Figure 13). Vertical aerial photographs are usually acquired in strips to provide continuous coverage of the terrain along the aircraft's flight path. Adjacent flight lines are used to provide complete coverage for large areas. They will typically be acquired with overlap between adjacent photographs for stereoscopic viewing.

Equipment that has been destroyed according to a treaty could be displayed out in the open, and then vertical aerial photography could be acquired to provide a permanent record. The area coverage provided by the photographs is ideal for