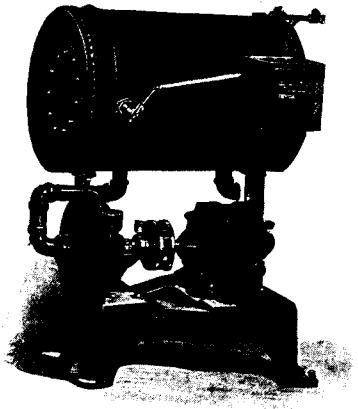


It will improve your heating plant to install an  
**Economy Automatic Condensation  
Pump and Receiver**



Increases rapidity of circulation by drawing condensation through the system, venting the air and returning water to boiler at high temperature. Eliminates snapping, pounding and cracking in radiators and pipes. Comprised of an expansion tank, automatic switch and centrifugal pump automatically operated by electric motor. Easily installed and increases the efficiency of either high or low pressure system 50 per cent. An "Economy" Hot Water Circulating Pump automatically operated by an electric motor will cure that sluggish circulation in your hot water system.  
Write for full particulars.

**THOMAS & SMITH, Inc.**

116-118 N. Carpenter St.  
CHICAGO, ILL

Represented by  
**JAMES J. MARTINDALE**  
Room 112 Mail & Empire Bldg.  
Toronto, Canada



## Watsmith Rolling Partitions

The modern method of closing off floor space in Sunday Schools, Churches, and all Public Buildings.

Highest efficiency, economy of floor space, simplicity of construction, ease of operation, reliability, attractive appearance—all are embodied in **Rolling Partitions of the Watsmith Style.**

No sagging, no crevices, no creaking hinges, no getting out of order.

Our Partitions have proved their superiority by years of service in many public buildings throughout Canada.

Send for Further Particulars.

**The Watson-Smith Co., Ltd.**  
Geary Avenue, TORONTO

**Gold Medal**  
World's Exposition, Brussels, 1910



## VALVE DISCS

"Practically



Indestructible"

For long and satisfactory service, nothing to equal them has ever been made.

MANUFACTURED SOLELY BY

**The Gutta Percha & Rubber Mfg. Co.**  
of Toronto, Limited

Toronto, Montreal, Halifax, Winnipeg, Calgary, Vancouver



**PILKINGTON BROTHERS LTD.**

**FIREPROOF**

# WIRED GLASS

Made in Three Varieties  
**CAST · ROLLED · POLISHED**

**A Positive Safeguard  
against  
Spread of Fire  
Injury from Breakage  
Burglars & Housebreakers**

**St. Helens Lancs.**