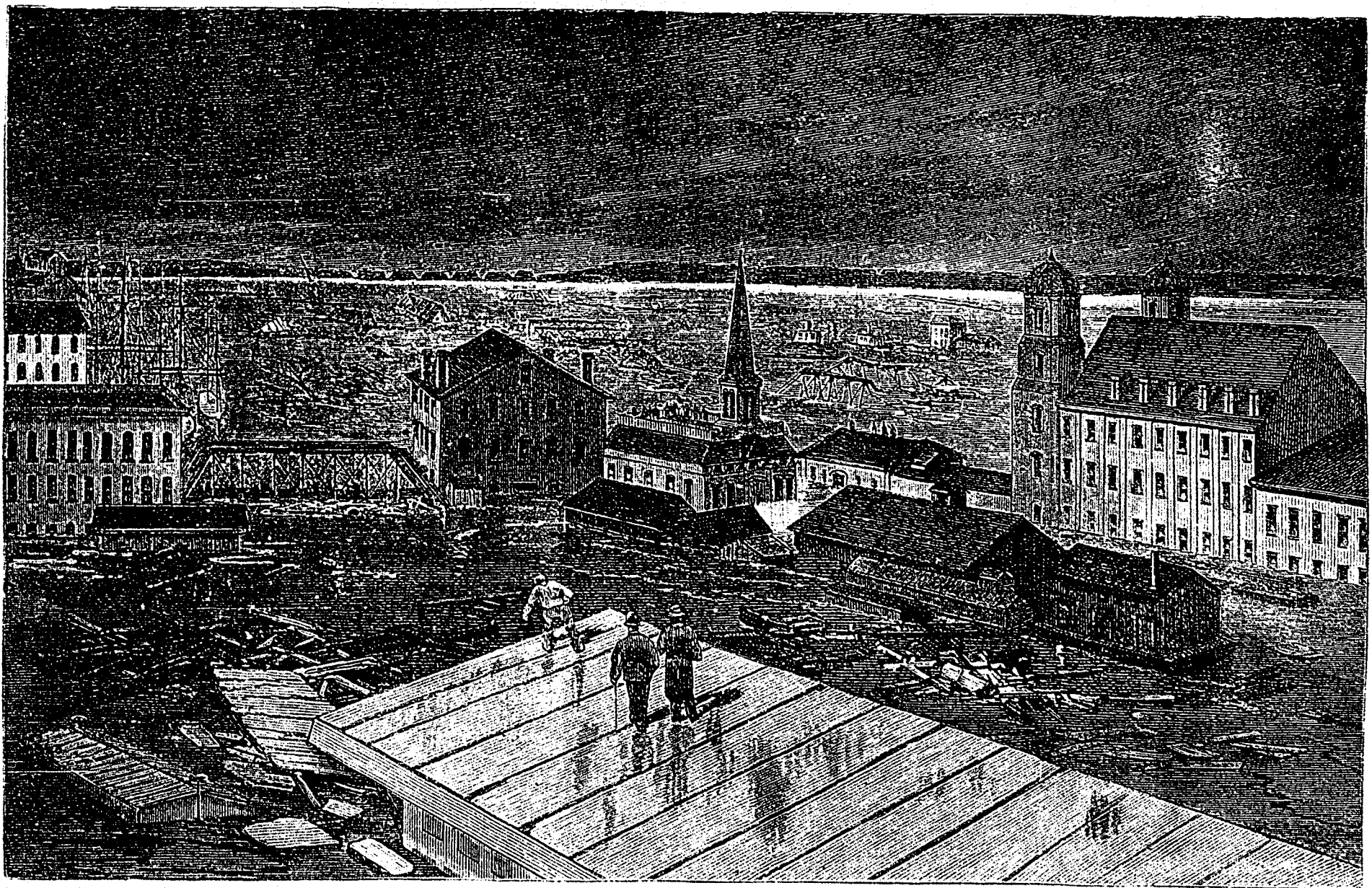


1. View of the head of Main Street. 2. At Fourth and River Streets. 3. On "The Point," from Head Island. On "The Point," with the Short-line fill in the centre.  
 KENTUCKY.—SCENES DURING THE RECENT FLOODS AT LOUISVILLE.—FROM SKETCHES BY D. J. ETLY.



OHIO.—VIEW OF THE RECENT-FLOODS AT TOLEDO, OHIO, LOOKING DOWN THE MAUMEE RIVER FROM THE DAYTON AND MICHIGAN FREIGHT YARDS.  
 FROM A SKETCH BY FRENCH BROTHERS.