

draughts-checkers

All communications to this department should be addressed directly to the Checker Editor, W. Forsyth, 30 Grafton Street.

SOLUTION.

PROBLEM 257.—The position was: Black men 1, 2, 4, 6, 7, 8, 10, 12, 20; White men 15, 17, 18, 19, 25, 27, 28, 31, 32; black to play and win.

GAME 154—"Kolso."

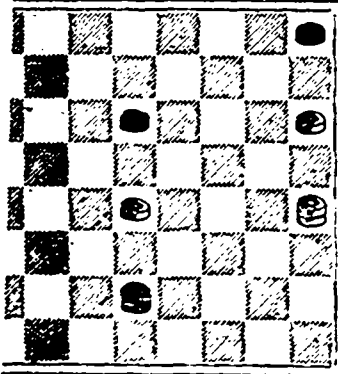
Played in the late match at Subentacade—Lynch vs. O'Hearn; Mr. Lynch having the blacks.

Table with 4 columns of numbers representing game positions for Lynch and O'Hearn.

At one stage of the game Mr. O'Hearn (white) had a winning position. Will any of our readers take the trouble to show where and how he might have won?

PROBLEM No. 259.

The following neat bit appeared in a recent number of a Scottish contemporary under the name of Mr. Under Davidson, of Aberdeen. Black men 4, 10, king 26.

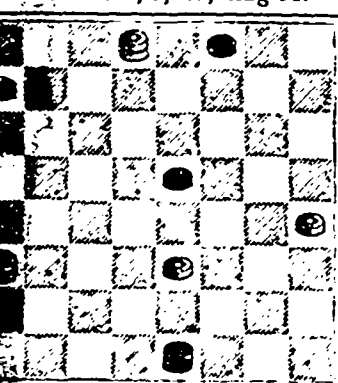


White men 12, 18, king 20. White to play and draw.

The Liverpool Mercury, from which it was given long ago, the author is a player of some eminence in the game. The following illustrates the same idea. We present as:

PROBLEM 260.

Black man 3, 5, 15, king 31.



White men 20, 23, king 2, 21. White to play and draw.

How many of our checkerists can see through the latter and point out the resemblance between the two in principle?

We freely admit that, after studying this for nearly two hours, we have not discovered the points in 260 as set forth by our contemporary—Ch. Ed.

JOHNSON'S ANODYNE LINIMENT

UNLIKE ANY OTHER. As much FOR INTERNAL AS EXTERNAL USE. In 1810. Originated by an Old Family Physician. Think Of It. In use for more than Eighty Years, and still leads. Generation after Generation have used and blessed it. Every Traveller should have a bottle in his satchel.

Piso's Remedy for Catarrh is the Best, Easiest to Use, and Cheapest. CATARRH Sold by druggists or sent by mail, 50c. E. T. Hazeltine, Warren, Pa.

GILLETT'S PURE POWDERED LYE

PUREST, STRONGEST, BEST. Ready for use in any quantity. For making Soap, Softening Water, Disinfecting, and a hundred other uses. A can equals 20 pounds Sal Soda. Sold by All Grocers and Druggists. E. W. GILLETT, Toronto.

MACHINISTS SPOONER'S COPPERINE

Will give you better satisfaction than any other. Will pour for you. For use in the workshop and cooling. Stands and works like a clock. Will wear long and will not get out of order. It is the best thing in the world. Circular saws, etc. & The Best Bearings, Gear M. etc. COPPERINE has no equal for them. Hardwares all Sell It.

Advertisement for '9 CORDS IN 10 HOURS' featuring an image of a saw and descriptive text about its efficiency.

The Confederation Life Toronto. Issues Life Annuities on most favorable terms. Rates realize far more than ordinary interest on investment. F. W. GREEN, HALIFAX, MANAGER MARITIME PROVINCES.

COMPOUND CONDENSING ENGINE, for Mining, etc. HOISTING PLANTS, GOLD MINING & MILL MACHINERY. W. W. Howell & Co. 121 to 123 LOWER WATER ST

PROVINCE OF NEW BRUNSWICK. Synopsis of "The General Mining Act," Chapter 18, 54th Victoria.

Leases for Mines of Gold, Silver, Coal, Iron, Copper, Lead, & Other Mines & Minerals. GOLD AND SILVER. PROSPECTING LICENSES up to 100 areas (each 150 feet by 250 feet), issued at 50 cts. an area up to 10 areas, and 25 cts afterwards per area, good for one year.

LICENSES TO SEARCH, good for one year, \$20 for 5 square miles. Lands applied for must not be more than 2 1/2 miles long, and the tract so selected may be surveyed on the Surveyor General's order at expense of Licensee, if exact bounds cannot be established on maps in Crown Land Office. Renewals for second year may be made by consent of Surveyor General, on payment of \$20. Second Rights to Search can be given over same ground, subject to party holding first Rights, on payment of \$20. LICENSE TO WORK.—On payment of \$50 for one square mile, good for two years, and extended to three years by further payment of \$25. The lands selected must be surveyed and returned to Crown Land Office. LEASES are given for 20 years, and renewable to 80 years, at annual rental of \$50 for 1 square mile. The Surveyor General, if special circumstances warrant, may grant a lease larger than one square mile, but not larger than two square miles.

ESTABLISH. Coal, 10 cts. per ton of 2,240 lbs. Copper, 4 cts. on every 1 per cent. in a ton of 2,242 lbs. Lead, 2 cts. on every 1 per cent. in a ton of 2,240 lbs. Iron, 5 cts. per ton of 2,240 lbs. And other Minerals in proportion. APPLICATIONS can be filed at the Crown Land Office each week day from 9 30 a. m. to 4 30 p. m., except Saturday, when Office closes at 1 p. m. L. J. TWEEDIE, Surveyor General.

119 Hollis St. HALIFAX, N. S. — OPEN AFTER — XMAS HOLIDAYS, JAN. 4, 1892. Send for CIRCULARS to VICTOR FRAZEE, B. A., Secretary, or J. C. P. FRAZEE, PRINCIPAL.

JANUARY IS THE MONTH WE SET APART FOR Special Bargains. Come & Examine our Stock Taking Clearances. Cragg Bros. & Co. Cor. Barrington & George Sts. Cutlery, Household Hardware, Builders' Hardware, Mechanics' Tools, Novelties, &c., &c. Printed by Halifax Printing Co., 161 Hollis St.