

CEMENT.

We manufacture the

THOROLD CEMENT.

It is the best and cheapest Used on all Government works, and also on the Grand Trunk Railway.

Estate of John Battle, - Thorold, Ont.

THE BULL-DOG BRAND

—OF—

PAINTS, COLORS and VARNISHES
ARE SUPERIOR TO ALL OTHERS



(Trade Mark.)

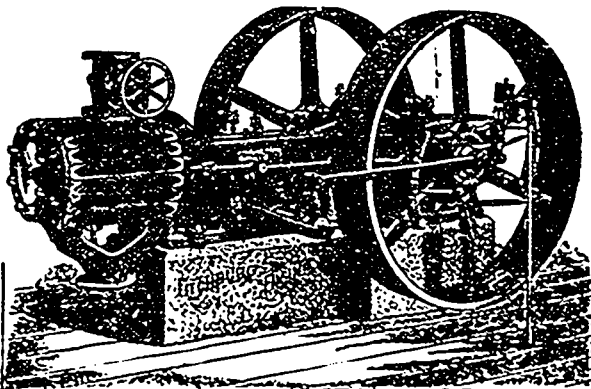
The Bull-dog Trade Mark on Paints is a guarantee that they are manufactured under the personal supervision of Mr. William Johnson.

Send for Catalogue and Prices to the Sole Manufacturers.

WM. JOHNSON, DICKSON & CO.
MONTREAL

Burrell-Johnson Iron Co., Ltd.

YARMOUTH, Nova Scotia



Sole Manufacturers for Canada of the

FITCHBURG AUTOMATIC HIGH-SPEED ENGINES

Closest Regulation. Closest Economy. Very Best Stock and Work.

Of the Fitchburg Engine now running in the power house of the Yarmouth Street Railway Co., Mr. J. S. Skinner, engineer of the company, writes: "The Fitchburg engine installed by you is giving perfect satisfaction. It is very neat in appearance, strong and durable. It runs perfectly cool and noiseless, and as for workmanship and close regulation there is no better. Our voltage stands the same, let it be light or heavy loads. As all know the sudden change of load to which a street railway generator is liable, I think the engine gives as near perfect regulation as can be had."

Adapted for Electric Lighting and all places where a reliable High-Speed Engine can be advantageously used.

WM. McMILLAN, Mgr. JNO. S. TOWER, Supt. H. S. BURNELL, Sec.-Treas.

The Mac Machine Co.

BELLEVILLE, Ont.

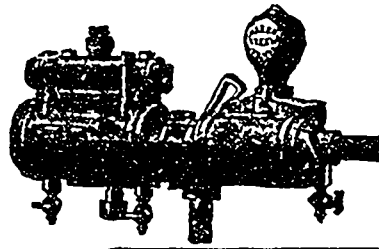
Manufacturers of and Dealers in

Rock Drills, Hoisting Engines, Boilers, Wire Rope
Rubber Hose and Couplings, Batteries, Fuses

COMPLETE PLANT OF

MINING, TUNNELING AND QUARRYING MACHINERY

The MARSH Steam Pump



Specially adapted for Boiler Feeding. It returns its exhaust into feed water, heating it from 40 to 50 degrees. All sizes, and with capacity ranging from 200 to 1,500 gallons per hour. Send for Catalogue. We also manufacture Engines and Boilers, all sizes. Grist and Saw Mill Machinery, Water Wheels, Shafting, Hangers and Pulleys. Steam Launches, Shipman & Acme Coal Oil Engines and Boilers, both Stationary and Marine.

Write for Particulars

JOHN GILLIES & CO.

MANUFACTURERS

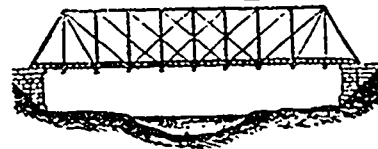
CARLETON PLACE, Ont.

A. & E. LOIGNON

(Polytechnic School of Montreal)

Civil Engineers

Iron
Bridge
and



Structural
Iron
Work

Designs, Estimates and Specifications Furnished

Works:

Cor. Canal and St. Columban Sts.

City Office:

7 Place d'Armes

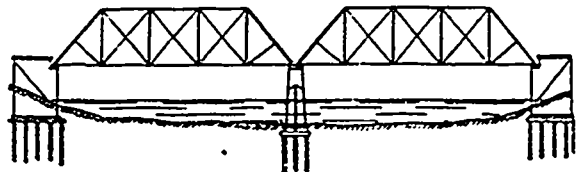
Telephone 9277

MONTREAL

J. M. SHANLY (M. Am. S. C. E., M. Can. S. C. E.) J. M. MCCARTHY, B.A. Sc. (A.M. Can. S. C. E.)

SHANLY & MCCARTHY

CIVIL ENGINEERS, STANDARD BLDG., MONTREAL



Surveys, Plans, Estimates, etc., or Railways, Bridges, Drainage, Waterworks, etc. Construction Superintended

DAVIS & SONS, Boat-Builders

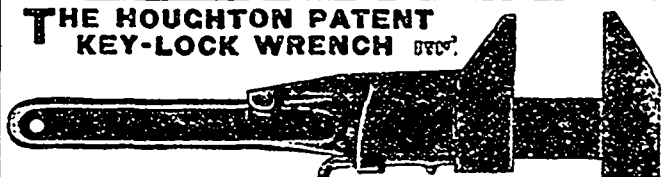
KINGSTON, Ont.



Builders of Yachts, Steam Launches, Side-wheel Steamers and Propellers. Pleasure Yachts built and fitted with steam or gasoline motors.

This firm have their own dry dock and engine works, and have every facility for turning out any kind of steam or sailing craft. Send for Catalogue.

THE HOUGHTON PATENT KEY-LOCK WRENCH



is strong and durable, and for easy and rapid adjustment it has no equal. Ask your dealer for it.

Made in all sizes by

THE PARIS TOOL MFG. CO., Ltd., - PARIS, ONT.