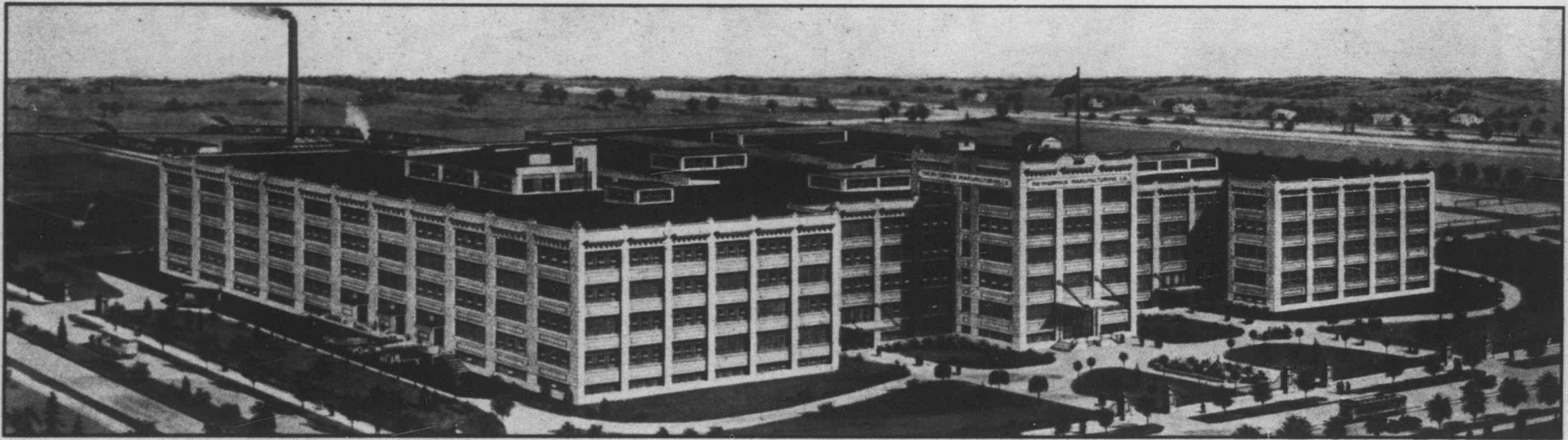


# McCORMICK'S

New, Snow-White, Sunshine Biscuit and Candy Factory — Just Completed  
LARGEST, MOST MODERN, MOST SANITARY FACTORY OF ITS KIND IN AMERICA



Home of Jersey Cream Sodas and hundreds of varieties of high-class fancy sweet biscuits and candy

**T**HE factory is pure white, both inside and out, finished on the outside with white terra cotta, and on the inside with white enamel and tile.

It is of reinforced concrete construction, absolutely fireproof, with sprinkler system throughout.

The factory is operated entirely by electricity—practically no shafting or belting used, eliminating all danger from accidents, etc.

We have our own private railway switch. Eight carloads can be loaded and unloaded at the same time.

Abundance of light.

Impossible for mice and rats to exist, owing to the construction of the building.

Every accommodation made for employees, such as sunshine dining-rooms, where meals are served at cost, rest rooms, reading rooms, Red Cross department, gymnasium, smoking room, dressing and locker rooms, lawn tennis court, baseball diamond, in fact everything for the accommodation and convenience of the employee.

**THE McCORMICK M'F'G CO., LIMITED - - - LONDON, CANADA**

Branches—Montreal, Ottawa, Hamilton, Kingston, Winnipeg, Calgary, St. John, N.B., Port Arthur