

INCORPORATED TORONTO SIR J. A. BOYD  
1886. PRESIDENT.

# CONSERVATORY OF MUSIC

COLLEGE STREET.  
DR. EDWARD FISHER, Musical Director  
AFFILIATED WITH TORONTO UNIVERSITY

Examinations, June 14th to 17th.  
SCHOOL OF LITERATURE & EXPRESSION  
MRS. INEZ NICHOLSON-CUTTER, Principal.  
CALENDARS MAILED ON APPLICATION

CHURCH DAY SCHOOL  
Major Street, Toronto  
SISTERS S. JOHN THE DIVINE  
KINDERGARTEN and  
ELEMENTARY DEPARTMENT

ST. MARGARET'S  
COLLEGE TORONTO

A HIGH-CLASS RESIDENTIAL AND DAY  
SCHOOL FOR GIRLS.

Preparation for Universities, Music, Art, Domestic  
Science, Elocution, and Physical Culture.  
Only teachers of the highest standing employed,  
and up-to-date class-room equipment.  
The names of ALL the teachers and their quali-  
fications are given in the booklet which may be  
obtained by applying to GEORGE DICKSON,  
M.A., Director, (Late Principal Upper Canada  
College).  
MRS. GEORGE DICKSON, Lady Principal.

Trinity College School,  
PORT HOPE, Ont.  
SPEECH DAY PROCEEDINGS  
THURSDAY, JUNE 24TH.  
Annual Service in the School Chapel at 8 p.m.  
Preacher: The Provost of Trinity College.  
FRIDAY, JUNE 25TH.  
Annual Prize Delivery in the Gymnasium at 11 a.m.  
Chairman: The Bishop of Toronto.

A Telegraph Operator  
has pleasant work, gets good wages and  
rises to the highest positions. We teach  
it thoroughly and quickly, also railroad  
rules, signals, etc., and start our Graduates  
in telegraph service. Our school is recom-  
mended by telegraph operators and railroad  
officials. Write for terms and prospectus.  
CANADIAN SCHOOL OF TELEGRAPHY  
Cor. Queen and Yonge Streets, Toronto.

SPRING TERM FROM APRIL 5th.  
A large number of new students will commence  
work on the above date, but if you cannot arrange  
to enter then you may come in at any time. We  
have no summer vacation. The

BRITISH  
AMERICAN  
College

V M.C.A. BLDG., TORONTO.

has a reputation for giving the most thorough and  
practical courses in all branches of BUSINESS  
and SHORTHAND work. If interested in an  
education THAT WILL PAY, write for free  
information.  
W. BROOKS, Principal.

ST. ALBAN'S CATHEDRAL SCHOOL  
Toronto—Incorporated

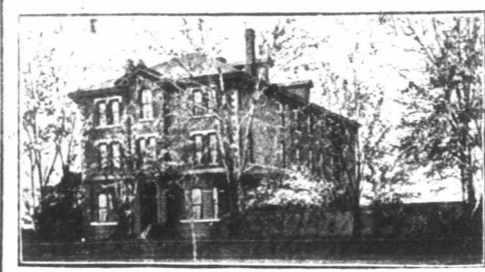
For BOARDERS and DAY Boys.  
Chairman—His Lordship the Bishop.  
A thoroughly qualified staff. For prospectus address  
M. E. MATTHEWS, Principal.

CHURCH BRASS WORK

Eagle and Rail Lecterns, Altar Vases, Ewers, Candi-  
sticks, Altar Desks, Crosses, Vesper Lights, Altar  
Rails, Etc. Chandelier and Gas Fixtures.  
CHADWICK BROTHERS  
(Successors to J. A. Chadwick).  
MANUFACTURERS  
182 to 190 King William St. HAMILTON, Ont.

Church  
Brass Work  
MEMORIAL  
BRASSES.  
RAILS, VASES.

PRITCHARD ANDREWS  
CO. OF OTTAWA, LIMITED  
133 SPADINA ST. OTTAWA



"Glen Mahur"  
RESIDENTIAL AND DAY SCHOOL  
FOR GIRLS  
651 SPADINA AVENUE, TORONTO  
Thorough English Course. Individual Attention.  
Pupils prepared for the Universities  
and for Examinations in Music and Art.  
Large staff of Resident and Visiting Teachers.  
MISS VEALS, Lady Principal.

Bishop Bethune  
College, Oshawa, Ontario  
UNDER THE CHARGE OF  
The Sisters of St. John the Divine  
Visitor, the Lord Bishop of Toronto.  
Preparation for the University.  
For terms and particulars apply to the  
SISTER IN CHARGE, or to  
The Sisters of St. John the Divine  
4209 ST. JAMES STREET, TORONTO

School of the Sisters of the  
Church, 106 Beverley Street,  
TORONTO, Ont.  
Boarding and Day School for Girls.  
Visitor, The Lord Bishop of Toronto.  
Terms Moderate. Vacancies for Boarders.  
FALL TERM WILL BEGIN SEPT. 12TH.  
ADDRESS.—SISTER IN CHARGE.



ST. ACNES' SCHOOL.  
A Church School for Girls,  
ELMPOOL, BELLEVILLE.  
Patron—The Lord Bishop of Ontario  
Prepares for Matriculation. Conservatory  
of Music Examinations held at the School.  
Courses in Art, Physical Culture, Domestic  
Science. Beautiful building with all modern  
improvements—extensive grounds. TERMS  
MODERATE. For prospectus apply to  
MISS F. E. CARROLL.

WESTBOURNE School for Girls  
340 Bloor Street W., TORONTO, Can.  
Re-opens September 12th, 1904.  
A Residential and Day School, well appointed, well  
managed and convenient. Specialists in each de-  
partment. Affiliated with the Toronto Conservatory  
of Music. Dr. Edward Fisher, Musical Director;  
F. McGillivray Knowles, R.C.A., Art Director. For  
announcement and information, address the principals.  
MISS M. CURLETTE, B.A.  
MISS F. E. DALLAS, Mus. Bach

ST. MONICA'S  
Residential and Day  
School for Girls.  
170 Bloor St. W., Toronto  
Re-opens Thursday, Sept. 10th.  
Thorough course in English, Languages, Music,  
Art, Elocution and Domestic Science, and Physical  
Culture. Prepares for University and Departmental  
Examinations.  
Kindergarten and Primary Departments.  
Teachers, Specialists in each Department.  
A Home School. Extensive Grounds.  
For Prospectus apply to  
MISS PHILLPOTTS,  
LADY PRINCIPAL.

Branksome Hall  
102 Bloor St. E., Toronto.  
A HIGH CLASS RESIDENTIAL AND  
DAY SCHOOL FOR YOUNG LADIES  
Under the joint management of Miss Scott, formerly  
Principal of the Girls' Department of the Provincial  
Model School, Toronto, and Miss Merrick, formerly  
of Kingston.  
Autumn Term begins September 7.  
For circular apply to MISS SCOTT, Principal

Edgehill, Church School  
for Girls  
WINDSOR, NOVA SCOTIA  
INCORPORATED 1891.  
The Bishop of Nova Scotia, Chairman Board of  
Trustees. The Bishop of Fredericton, member  
of Board of Trustees, ex-officio.  
Miss Lefroy, of Cheltenham Ladies' College, England,  
Principal, assisted by Eleven Resident Experienced  
Governesses from England, (five of whom are special-  
ists in the Music and Art Departments), and one non-  
resident Instructor, Housekeeper, Matron and Nurse.  
Extensive buildings, with capacity for 100 Resi-  
dents; Heated by Hot Water, Lighted by Electricity  
Grounds covering eight acres, with Lawns for Tennis,  
Croquet, Basket Ball, Hockey, &c. School Dairy and  
Laundry. Preparation for the Universities.  
For Calendar apply to DR. HIND.

LUXFER ELECTRO-GLAZED  
Church Window  
Decorative Glass.  
WRITE FOR PRICES.  
Luxfer Prism Company, Limited,  
100 King Street West, Toronto.

HIGHER EDUCATION FOR GIRLS  
The Bishop Strachan School  
(Thirty-seventh Year)  
For Calendar apply to MISS ACRES, Lady  
Principal, Wykeham Hall, Toronto.  
The Parkdale Church School  
FOR GIRLS—151 DUNN AVE.  
KINDERGARTEN—FOR BOYS  
and GIRLS  
For Calendar apply to  
MISS MIDDLETON, Lady Principal.

MEMORIAL WINDOWS.  
Our productions are  
extensively adopted.  
Robert McCausland,  
Limited  
86 Wellington St. West, TORONTO

CHURCH BRASS WORK of every description  
made to order on shortest notice. Designs furnished  
and satisfaction guaranteed.  
KEITH & FITZSIMONS, LIMITED  
111 King Street West, Toronto.

MEMORIALS  
AND  
DOMESTIC  
ART  
GLASS  
DOMINION STAINED GLASS  
CO. ESTD. 1881.  
34 RICHMOND ST. E. TORONTO.  
+ Hockey & Football Programs

JONES  
AND WILLIS  
Church Furniture Manufacturers  
Metal, Wood, Stone  
and Textile Fabrics.  
STAINED GLASS ARTISTS  
43 Great Russell Street, LONDON, ENG  
Opposite British Museum  
Also at Birmingham and Liverpool

THE CANADIAN NORTH-WEST  
HOMESTEAD  
REGULATIONS.

Any even numbered section of Dominion Lands in  
Manitoba or the North-West Territories, excepting  
8 and 26, which has not been homesteaded, or re-  
served to provide wood lots for settlers, or for other  
purposes, may be homesteaded upon by any person  
who is the sole head of a family, or any male over 18  
years of age, to the extent of one quarter section, of  
160 acres, more or less.

ENTRY.  
Entry may be made personally at the local land  
office for the district in which the land to be taken is  
situate, or if the homesteader desires, he may, on  
application to the Minister of the Interior, Ottawa,  
the Commissioner of Immigration, Winnipeg, or the  
local agent for the district in which the land is situate,  
receive authority for some one to make entry for him.  
A fee of \$10.00 is charged for a homestead entry.

HOMESTEAD DUTIES.  
A settler who has obtained an entry for a  
homestead is required by the provisions of the Do-  
minion Lands Act and the amendments thereto to  
perform the conditions connected therewith, under  
one of the following plans:—

- (1) At least six months' residence upon and  
cultivation of the land in each year during the term of  
three years.
- (2) If the father (or mother, if the father is de-  
ceased) of any person who is eligible to make a home-  
stead entry under the provisions of this Act, resides  
upon a farm in the vicinity of the land entered for  
by such person as a homestead, the requirements of  
this Act as to residence prior to obtaining patent may  
be satisfied by such person residing with the father or  
mother.
- (3) If a settler has obtained a patent for his home-  
stead, or a certificate for the issue of such patent,  
countersigned in the manner prescribed by this Act  
and has obtained entry for a second homestead, the  
requirements of this Act as to residence prior to ob-  
taining patent may be satisfied by residence upon the  
first homestead, if the second homestead is in the  
vicinity of the first homestead.
- (4) If the settler has his permanent residence upon  
farming land owned by him in the vicinity of his  
homestead, the requirements of this Act as to resi-  
dence may be satisfied by residence upon the said  
land.

The term "vicinity" used above is meant to indi-  
cate the same township or an adjoining or cornering  
township.

A settler who avails himself of the provisions of  
Clauses (2), (3) or (4) must cultivate 30 acres of his  
homestead, or substitute 20 head of stock, with build-  
ings for their accommodation, and have besides 80  
acres substantially fenced.

Every homesteader who fails to comply with the  
requirements of the homestead law is liable to have  
his entry cancelled, and the land may be again  
thrown open for entry.

APPLICATION FOR PATENT.  
Should be made at the end of the three years, before  
the Local Agent, Sub-Agent, or the Homestead  
Inspector. Before making application for patent,  
the settler must give six months' notice in writing to  
the Commissioner of Dominion Lands, at Ottawa,  
of his intention to do so.

INFORMATION.  
Newly arrived immigrants will receive at the Immi-  
gration Office in Winnipeg or at any Dominion Lands  
Office in Manitoba or the North-West Territories,  
information as to the lands that are open for entry,  
and from the officers in charge, free of expense, ad-  
vice and assistance in securing land to suit them.  
Full information respecting the land, timber, coal  
and mineral laws, as well as respecting Dominion  
Lands in the Railway Belt in British Columbia, may  
be obtained upon application to the Secretary of the  
Department of the Interior, Ottawa, the Commis-  
sioner of Immigration, Winnipeg, Manitoba, or to  
any of the Dominion Land Agents in Manitoba or  
the North-West Territories.

JAMES A. SMART,  
Deputy Minister of the Interior.

N.B.—In addition to Free Grant Lands to which  
the regulations above stated refer, thousands of acres  
of most desirable lands are available for lease or  
purchase from railroad and other corporations and  
private firms in Western Canada.

J. YOUNG  
THE LEADING Undertaker and  
359 YONGE ST. Embalmer  
Telephone 679.

Vol.  
JULY  
BERI  
348  
United  
Establish medium C  
Clergy. C  
Please writ  
Webster C  
Charles P  
Street, Ne  
WANTEI  
Paul's Ch  
the unders  
state salar  
Warden, S  
WANTEI  
as travelin  
Good term  
Canadian C  
WANTEI  
a small city  
man Office  
WANTEI  
Rev. F. H.  
THE G  
Ch  
The next  
September  
Special S  
for gradua  
The requ  
lars can be  
The V  
Establis  
1884.  
COPEL  
H  
24 Vict  
Nigl  
THE  
Assu  
In  
AUTHOI  
Hea  
R. H. MA  
Acti  
Head Off  
An  
"Clu  
This  
selecte  
ish-Vir  
It smo  
th ton  
lb. pac  
A. CLUB