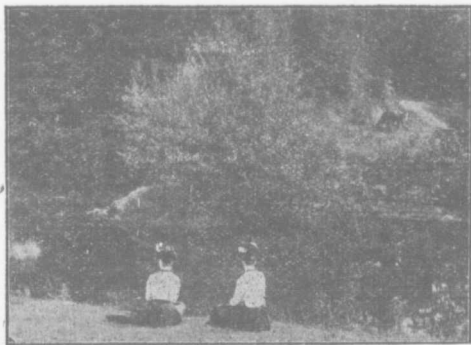


Who should come to Prince Edward Island

There are also openings for a limited number of agricultural labourers to take employment on the farms of the Province, with a view of acquainting themselves with the system of agriculture prevailing here, and of eventually purchasing land of their own.

Transfers of Land Titles

Most of the land is held in fee simple, the number of persons who are tenants outside of the city and towns being small. Nearly every man owns his own farm. Land is transferred by deeds which are recorded in the Registry Office of the County in which the land is situated. The books of the Registrars of Deeds form the means of verifying land titles at comparatively little cost.



"With spots of sunny openings, and with nooks
To lie and read in, sloping into brooks."