

colman style over the shoulders and terminate at the front; and the sides are gathered to rise prominently over the shoulders. The fronts and backs are connected by narrow gores, and the closing is made invisibly at the front. The modified Medici collar is covered with feather ornaments. The free edges of the wrap are decorated with ostrich-feather trimming, three jet ornaments fall from the lower end of each tab almost to the edge of the skirt, and three similar ornaments decorate the upper part of each front.

The skirt is of hair-line striped cheviot. It exemplifies the latest style of circular bell skirt and is made with a pointed train. The front and sides of the skirt fall smoothly over the foundation skirt, which is composed of five bell-gores; and its bias back edges are joined in a center seam, at each side of which fan-plaits flare in characteristic fashion. The skirt is decorated at the bottom with three rather broad milliner's folds. If the train be not desired, the skirt may be cut to uniform round length.

An appropriate wrap for church, calling and other semi-ceremon-

and is shown in two views on page 331 of this DELINEATOR.

Fine French serge and velvet are here prettily combined in the basque, which revives the inserted or Breton vest once so popular. The vest is attached underneath to the front edges of the fronts by means of buttons and button-holes or hooks and eyes, the fronts almost meeting at the pointed lower edge of the vest and spreading gradually toward the shoulders. A row of Kursheedt's Standard point de Gène lace is applied down the front edge of each front and above a cuff facing of velvet on each wrist. The basque is adjusted with perfect smoothness by double bust darts, under-arm and side-back gores and a curving center seam; and it is pointed at the center of the front and back and curves high over the hips. The standing collar fits closely, and its ends lap in line with the closing of the vest at one side. The sleeves rise with fashionable fulness above the shoulders and follow the shape of the arms below the elbow.

Several vests may be made for a basque of this kind, thus producing variety at small cost. With both cotton and woollen basques piqué vests in white and colors will be very fashionable.

The attachment of the vest may be visible or invisible, as preferred, and decoration may be added to the vest or to the fronts, as deemed most effective. Sometimes the vest will be of the same kind of material as the basque, and will be cross-trimmed with gimp, braid, galloon, etc. All seasonable dress goods may be made up by the mode, which is especially nice for gingham, etc.

The hat has a soft crown of silk and is trimmed with ribbon, jet and tips, and a silk ribbon bridle is bowed under the chin.



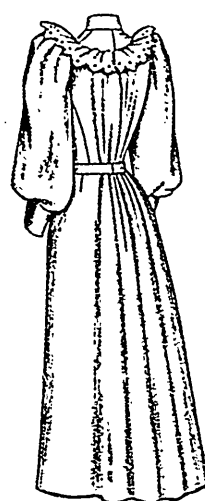
4456

Front View.



4456

Side-Back View.



4456

View without Girdle and Showing Skirt in Round Length.

FIGURE NO. 437 T.—LADIES' BASQUE.

(For Illustration see Page 318.)

FIGURE NO. 437 T.—This illustrates a Ladies' basque. The pattern, which is No. 4422 and costs 1s. 3d. or 30 cents, is in thirteen sizes for ladies from twenty-eight to forty-six inches, bust measure, and is differently portrayed on page 331 of this magazine.

French-gray camel's-hair is the material here represented in the basque, which extends a little below the hips and presents a uniform lower outline. The superb adjustment is due to double bust darts, under-arm and side-back gores and a well curved center seam, and the closing is made at the center of the front with button-holes and buttons. The coat sleeves are arranged with fashionable fulness at the top, where they are gathered to rise high above the shoulders. They are made up on smooth linings, and

each wrist is trimmed with an encircling band of braid. The standing collar is covered with a braid band, and each front is decorated along the under-arm seam with a similar band.

All seasonable silks, woollens and cottons are well adapted to the mode, and figured, striped, checked and plain goods will make up with equal satisfaction in basques of this kind. The style is susceptible of many variations in the way of decoration, soutache braiding, flat bands, Escorial embroidery, velvet ribbon, gimp, galloon and passementerie being suitable for garniture.

The large hat is of fancy straw simply ornamented with ribbon and quills.

FIGURE NO. 436 T.—LADIES' BASQUE.

(For Illustration see Page 318.)

FIGURE NO. 436 T.—This illustrates a Ladies' basque. The pattern, which is No. 4425 and costs 1s. 3d. or 30 cents, is in thirteen sizes for ladies from twenty-eight to forty-six inches, bust measure,

LADIES' COSTUME, WITH CIRCULAR BELL SKIRT.

(For Illustrations see Page 319.)

No. 4405.—Different views of this costume are given at figures Nos. 414 T, 415 T, 416 T and 417 T in this DELINEATOR.