

Butterick Patterns.



Important Facts About "Seam Allowances" and "Outlets."

COPYRIGHT 1899, BY THE BUTTERICK PUBLISHING CO. (LIMITED)

All our Patterns have Seam Allowances, and many of them have Outlets as well.

Seam Allowances—The Allowance for Seams is generally $\frac{3}{8}$ inch, though in some Patterns, such as Boys' and Men's Styles, Shirt-Waists, Underwear, Aprons, etc., the Seam Allowance is $\frac{1}{4}$ inch.

Outlets—By the word "Outlet" is meant "extra material allowed additional to the $\frac{3}{8}$ inch or $\frac{1}{4}$ inch Seam Allowance." Outlets are allowed only on those Edges where possibly additional or less material may be required in fitting. In other words, there is an extra Allowance in the Pattern at each Edge where an Outlet or Reduction may be necessary in the Garment, and where it may be made without harm to the general shapeliness and fit. In Patterns for Body-garments "outlets" are usually along Shoulder Edges, Under-Arm Edges, Back Edges of Sleeve Portions, and the Edges of such other portions as might be affected by alterations in the Shoulder, Under-Arm or Sleeve Seams. In Patterns for Skirts, and for other Styles not Body-garments, Outlets are also allowed as may be advantageous. In each case where an Outlet is allowed, a Border Line of Large Perforations follows each Edge in the Pattern where the Basting should be made in the Garment.

When a Garment, cut by a Butterick Pattern purchased according to the system of measurements shown herewith, has the Basting Seams taken along the lines of perforations where Outlets are provided, and the other Seams taken at the proper distance from the edges (that is, $\frac{3}{8}$ -inch or $\frac{1}{4}$ -inch, as may be specified in the label), such Garment will usually fit the wearer accurately, without alteration being required at any of the Seams. When, however, alteration is found necessary, it should be made at the Seams where Outlets are allowed.

Anybody using our Patterns, who will bear in mind the above Facts relative to them, will avoid errors caused by disregarding the instructions about Seams and Outlets to be found in the Pattern Labels.

HOW TO TAKE MEASURES FOR BUTTERICK PATTERNS.

SCALE No. 1.

Proportionate Bust, Waist and Hip Measures for Ladies.

BUST.	WAIST.	HIP.	BUST.	WAIST.	HIP.
30.....20.....36	40.....30.....48½				
31.....21.....37	41.....31.....50				
32.....22.....38	42.....32.....51½				
33.....23.....39	43.....33.....53				
34.....24.....40	44.....34.....54½				
35.....25.....41	45.....35.....56				
36.....26.....42½	46.....36.....57½				
37.....27.....44	47.....37.....59				
38.....28.....45½	48.....38.....60½				
39.....29.....47					



For the Pattern of a Lady's Basque or any Garment requiring a Bust Measure to be taken.—Put the Measure around the body, over the dress, close under the arms, drawing it closely—NOT TOO TIGHT.

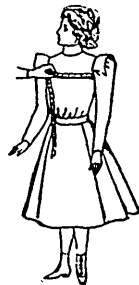
For the Pattern of a Lady's Skirt or any Garment requiring that a Waist or Hip Measure be taken.—When the lady is fairly proportioned the Waist Measure will suffice for a Skirt, Petticoat, etc.; take this over the dress. When she is large about the hips in proportion to her waist, take the Hip measure. Pass the Tape easily around the hips, about six inches below the waist.

For the Pattern of a Lady's Sleeve.—Put the Measure around the muscular part of the upper arm, about an inch below the lower part of the arm-hole, drawing the tape closely—NOT TOO TIGHT.

SCALE No. 2.

Proportionate Ages, and Bust and Waist Measures of Misses, Girls and Children.

AGE.	BUST.	WAIST.	AGE.	BUST.	WAIST.
1½.....17.....18½	9.....26.....28½				
2.....18.....19½	10.....27.....29½				
3.....19.....20½	11.....28.....30½				
4.....20.....21½	12.....29.....31½				
5.....21.....22½	13.....30.....32½				
6.....22.....23½	14.....31.....33½				
7.....23.....24½	15.....32.....34½				
8.....24.....25½	16.....33.....35½				



In Ordering Patterns for a Miss or Little Girl it is usual to order by the Age; but when she is extra large or small for her age, instead of ordering by Age, order Waists, Costumes, Coats, etc., by Bust Measure; and Skirts, Petticoats, etc., by Waist Measure or by Length of Skirt below the Belt; but give the Age also, taking the measures the same as for Ladies.

For the Pattern of a Hat, Bonnet, Hood, etc.—For Children and Youths it is customary to order by the Age; but when the Head is extra large or small for the Age, instead of ordering by Age, order by Head Measure or Hat Size. For Adults, order by Head Measure or Hat Size. To measure, put the measure about the Head, drawing it closely—NOT TOO TIGHT.

For the Pattern of a Doll, or for a Set of Patterns for Garments for a Doll whether Lady, Gentleman, Girl, Boy or Baby: Give the Actual Length of the Doll from the Top of the Head to the Bottom of the Foot; in taking the Doll's measure, measure PARALLEL with the Doll and NOT ALONG the CONTOUR.

SCALE No. 3.

Proportionate Ages and Breast and Waist Measures for Boys.

AGE.	BREAST.	WAIST.	AGE.	BREAST.	WAIST.
2.....19.....20½	10.....27.....28½				
3.....20.....21½	11.....28.....29½				
4.....21.....22½	12.....29.....30½				
5.....22.....23½	13.....30.....31½				
6.....23.....24½	14.....31.....32½				
7.....24.....25½	15.....32.....33½				
8.....25.....26½	16.....33.....34½				
9.....26.....27½					



For the Pattern of a Man's or Boy's Coat or Vest.—Put the Measure around the Body, UNDER the jacket, close under the arms, drawing it closely—NOT TOO TIGHT. In ordering for a boy, give the age also.

For the Pattern of a Man's or Boy's Overcoat.—Measure around the Breast, over the coat that is to be usually worn. In ordering for a boy, give the age also.

For the Pattern of a Man's or Boy's Trousers.—Put the Measure around the Body, over the trousers at the waist, drawing it closely—NOT TOO TIGHT. In ordering for a boy, give the age also.

For the Pattern of a Man's or Boy's Shirt.—For the size of the neck, measure the exact size where the Neckband encircles it, and allow one inch—thus: if the exact size be 14 inches, select a pattern marked 15 inches. For the Breast, put the Measure around the Body, over the vest, UNDER the jacket or coat, close under the arms, drawing it closely—NOT TOO TIGHT. In ordering a Boy's Shirt Pattern, give the age also.