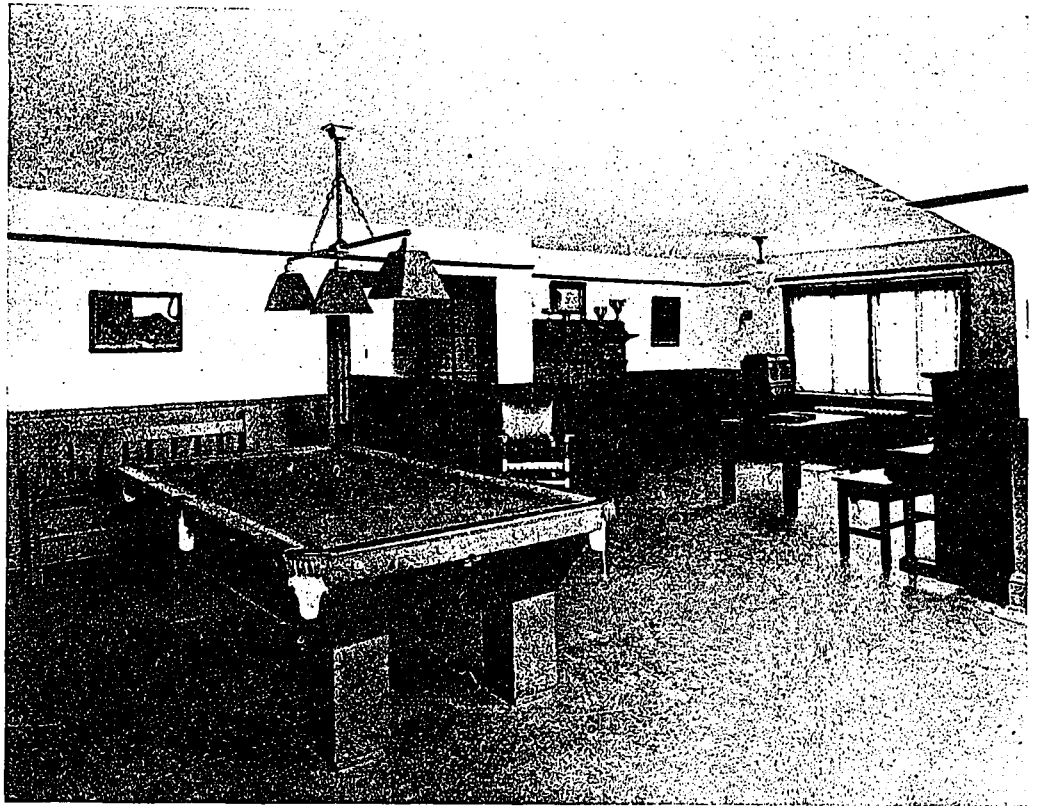


SITTING
ROOM,
NEW DORMITORY
BUILDING,
APPLEBY SCHOOL,
OAKVILLE, ONT.



style of the exterior of this building until all the buildings in the group are more or less of the same type. The next building to be erected will be a Memorial Chapel, illustrated herewith from the architects' perspective drawing, in memory of the Appleby boys killed in the Great War. The exterior of the Chapel shows the development of this policy of stucco and timber exteriors.

The new dormitory was completed in six months' time—April to September, 1918—and cost 29.24 cents per cubic foot for the building itself, and 30.35 cents inclusive of electric fixtures, linoleum, etc.

Soldiers' Graves and War Memorials

Supplementary estimates introduced by Sir Thomas White in the House of Commons include an item of \$500,000 to provide for Canada's share of the expenditure to be made by the Imperial War Graves Commission. An additional item of \$500,000 is also provided for battlefield memorials in Belgium and France.

Liberals in recent caucus at Ottawa discussed the erection of a monument in honor of the memory of the late Sir Wilfrid Laurier. The proposed memorial will be apart from the statue to be erected on Parliament Hill, for which there was a vote of twenty-five thousand dollars in the estimates this session.

PROPOSED
MEMORIAL CHAPEL,
APPLEBY SCHOOL,
OAKVILLE, ONT.

SHEPARD & CALVIN,
ARCHITECTS.

