

AMERICAN PLAYERS.

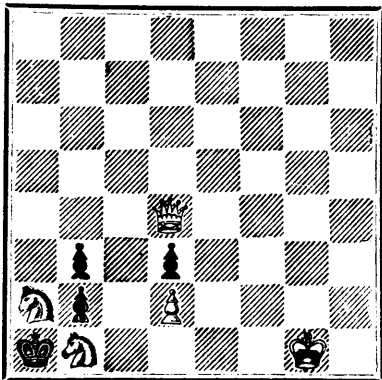
Atkinson, L. S.	Tilton, N. H.
Berry, William.	Beverly, Mass.
Blood, C. H.	Biddeford, Me.
Brown, L. T.	Cranbury, N. J.
Davis, L. W.	Oconomowock, Wis.
Freck, J.	Washington, D. C.
Gilbert, Mrs. J. W.	Hartford, Conn.
Hine, Edward.	New Orleans, La.
Holmes H.	Bay City, Mich.
Jager, Daniel.	New York
Kunkel, E. A.	Wolcottville, Conn.
Olcott, William.	Hartford, Conn.
Orchard, J. S.	Columbia, S. C.
Pieler, M. H.	Hartford, Conn.
Rogers, D. C.	Detroit, Mich.
Romeyn, John C.	Rondout, N. Y.

After another game having been played in the Blackburne-Zukertort match, the match is indefinitely postponed, owing to some irregularity in the depositing of Mr. Blackburne's stakes. Such a termination is disappointing, and is much to be regretted.

PROBLEM No. 134.

By Mr. W. A. SHINKMAN.

BLACK.



WHITE.

White to play and mate in three moves.

GAME 192ND.

Played on the 23rd June, 1877, between Messrs. Shaw and G. Barry, at the Montreal Chess Club.

(From the Illustrated New Yorker.)

(Scotch Gambit.)

WHITE.—(Mr. J. H. Shaw.) BLACK.—(Mr. G. Barry.)

- | | |
|---------------------|-----------------|
| 1. P to K 4 | P to K 4 |
| 2. Kt to K B 3 | Kt to Q B 3 |
| 3. P to Q 4 | P takes P |
| 4. B to Q B 4 | B to B 4 |
| 5. B to K Kt 5 (a) | P to B 3 |
| 6. B to R 4 | K Kt to K 2 (b) |
| 7. P to B 3 | P takes P (c) |
| 8. Kt takes P | Kt to Kt 3 |
| 9. Castles | Kt takes B |
| 10. Kt takes Kt | P to K Kt 3 |
| 11. Kt to K B 5 (d) | P takes Kt |

And White mated in five moves (e)

NOTES.

(a) A departure from the usual manner of carrying on the attack, and not so good as the ordinary continuations; to this move we think Black should have replied (5) B to K 2.

(b) To R 3 would be better.

(c) Black's play throughout is feeble; indeed the game principally serves to show how easily the Scotch Gambit wins against a weak defence.

(d) A capital stroke. The result of Black's capturing the Kt is shown in the game, and if Black play (11) Kt to K 4, to guard against the threatening move Q to Q 5, the following would be likely to result:

- | | |
|--|---------------|
| 12. Kt to Kt 7 (ch) | 11. Kt to K 4 |
| 13. Kt to K 6 (ch) and wins. | 12. K to B sq |
| If Black play (12) K to K 2, White can check at Q 5, and gains some advantage. | |
| (11) P to Q 3 seems the best resource, though even that is not satisfactory. | |
| (e) as follows: | |
| 12. Q to R 5 (ch) | 12. K to K 2 |
| 13. Q to B 7 (ch) | 13. K to Q 3 |
| 14. Kt to Kt 5 (ch) | 14. K to K 4 |
| 15. Q to Q 5 (ch) | 14. K to K 4 |
| 16. Q takes P mate | 15. K to B 5 |

GAME 193RD.

Being one of twenty simultaneous games played by Mr. Bird at the City of London Chess Club in July, 1875.

(Scotch Gambit.)

WHITE.—(Mr. Bird.) BLACK.—(Mr. Bussy.)

- | | |
|--------------------|-----------------|
| 1. P to K 4 | P to K 4 |
| 2. Kt to K B 3 | Kt to Q B 3 |
| 3. P to Q 4 | P takes P |
| 4. B to Q B 4 | Kt to B 3 |
| 5. Q to K 2 | P to Q 3 |
| 6. P to K R 3 | Q to Q 2 (a) |
| 7. B to Q Kt 5 | P to Q R 3 |
| 8. B to R 4 | P to Q Kt 4 |
| 9. B to Kt 3 | B to K 2 |
| 10. P to Q R 4 | P to Kt 5 |
| 11. P to R 5 | P to Q 4 |
| 12. B to R 4 | P takes P |
| 13. Kt to K 5 | Kt takes Kt |
| 14. B takes Q (ch) | B takes B (b) |
| 15. B to Kt 5 (c) | P to Q 6 |
| 16. P takes P | Kt takes P (ch) |
| 17. K to Q sq | Castles (K R) |
| 18. Kt to Q 2 | B to Kt 4 |
| 19. B takes Kt | B takes B (d) |
| 20. Q to K 3 | K R to K sq |
| 21. K to B 2 | Q R to Q sq |
| 22. K R to Q sq | B to Q 5 |
| 23. Q to Kt 5 | P to K B 3 |
| 24. Q to Kt 3 | P takes B P (c) |
| 25. Q to R 2 | P to K 6 |
| 26. Kt to B 3 | P to K 7 |
| 27. R to K sq | Kt takes R (ch) |
| 28. Kt takes Kt | R to Q 8 (f) |
| 29. R takes R | B to R 5 (ch) |
| Resigns | |

NOTES.

(a) B to K 2 is the better move.

(b) The last three or four moves of Black are very hazardous against a player of Mr. Bird's skill. Black's position, however, is very promising.

- (c) White should have castled here.
 (d) Black refuses here to win the Queen, thinking it will cost too much.
 (e) Putting the Queen out of play.
 (f) The latter part of the game is excellently played by Black.

SOLUTIONS.

Solution of Problem No. 132.

WHITE.

BLACK.

- | | |
|---------------------|-------------|
| 1. B to Q R 8 | f. Any move |
| 2. Mate accordingly | |

Solution of Problem for Young Players, No. 130.

WHITE.

BLACK.

- | | |
|------------------------------|--------------|
| 1. K B P moves becoming a Kt | 1. Anything. |
| 2. Kt mates | |

PROBLEMS FOR YOUNG PLAYERS NO. 131.

WHITE.

BLACK.

- | | |
|------------------------|------------------|
| K at Q 7 | K at Q R 2 |
| R at Q Kt 8 | Kt at Q B 3 |
| B at Q B sq | Pawns at Q 3 |
| Kt at Q 4 | Q R 3 and Q Kt 2 |
| Pawns at Q 5 and Q R 5 | |

White to play and mate in four moves.

MEN WANTED to sell goods to MERCHANTS. NO PEDDLING from house to house. HOTEL AND TRAVELING EXPENSES PAID. QUEEN CITY GLASS & LAMP WORKS, Cincinnati, Ohio.

JOHN MCARTHUR & SON,
OIL, LEAD, PAINT,
COLOR & VARNISH MERCHANTS
IMPORTERS OF

English and Belgian Window Glass, Rolled, Rough and Polished Plate Glass, Colored, Plain and

Stained Enamelled Sheet Glass,

PAINTERS' & ARTISTS' MATERIALS, BRUSHES.

CHEMICALS, DYE, STUFFS, NAVAL STORES, &c.

310, 312, 314 & 316 ST. PAUL ST.,

AND

253, 255 & 257 COMMISSIONERS ST.,

MONTREAL.

15-24-52-268

APPROVED BY THE MEDICAL FACULTY

DEVINS' WORM PASTILLES.

The most effective Remedy for Worms in Children or Adults.

Le meilleur remède contre les vers chez les enfants ou adultes.

PASTILLES DE DEVINS CONTRE LES VERS.

APPROUVEES PAR LA FACULTE MEDICALE

A Box will be sent to any address in Canada (post paid) on receipt of 25 cents. DEVINS & BOLTON, Druggists, Montreal.

NOTICE TO THE PUBLIC.

CANADIAN MECHANICS' MAGAZINE

AND

PATENT OFFICE RECORD.

This VALUABLE MONTHLY MAGAZINE has been much improved during the past year, and now embodies within its pages the most Recent and Useful information published connected with Science and the different branches of Mechanical Trades, selected with particular care, for the information and instruction of Mechanics in Canada. A portion of its columns is devoted to instructive reading, suitable for the younger members of a family, of either sex, under the title of the

ILLUSTRATED FAMILY FRIEND,

SUCH AS

FLORAL CULTURE, NATURAL HISTORY, POPULAR GAMES AND AMUSEMENTS, LADIES' FANCY AND NEEDLE WORK, AND SHORT PLEASING STORIES,

ALSO

SELECTED NEW MUSIC,

DOMESTIC RECEIPTS, &c.

The Canadian Mechanics' Magazine,

with the addition of the

Illustrated Family Friend

AND

PATENT OFFICE RECORD,

Contains 16 full pages of Superior Illustrations and about 125 diagrams of all the Patents issued each month in Canada; it is a work that merits the support of every Mechanic in the Dominion, whose motto should always be

"SUPPORT HOME INDUSTRY."

Price, only \$2.00 per annum.

BURLAND-DESBARATS LITH. CO.,

PROPRIETORS AND PUBLISHERS,

5 and 7 BLEURY STREET, MONTREAL.

F. N. BOXER, Architect, Editor.

In consequence of spurious imitations of

LEA AND PERRINS' SAUCE,
which are calculated to deceive the Public, Lea and Perrins have adopted A NEW LABEL, bearing their Signature, thus,

Lea & Perrins

which is placed on every bottle of WORCESTERSHIRE SAUCE, and without which none is genuine.

Ask for LEA & PERRINS' Sauce, and see Name on Wrapper, Label, Bottle and Stopper. Wholesale and for Export by the Proprietors, Worcester; Crosse and Blackwell, London, &c., &c.; and by Grocers and Oilmen throughout the World.

To be obtained of MESSRS. J. M. DOUGLASS & CO., MONTREAL; MESSRS. URQUHART & CO., MONTREAL.

14-14-52-156

THE COOK'S FRIEND

BAKING POWDER

Has become a HOUSEHOLD WORD in the land, and is a HOUSEHOLD NECESSITY

in every family where Economy and Health are studied. It is used for raising all kinds of Bread, Rolls, Pan cakes, Griddle Cakes, &c., &c., and a small quantity used in Pie Crust, Puddings, or other Pastry, will save the usual shortening, and make the food more digestible.

THE COOK'S FRIEND

SAVES TIME,

IT SAVES TEMPER,

IT SAVES MONEY.

For sale by storekeepers throughout the Dominion and wholesale by the manufacturer.

W. D. McLAREN, UNION MILLS,

15-17-52-249

55 College Street



15-23-13-265

CAUTION.—A great many Gentlemen buy their Shirts ready-made with a view to economy. If you really wish to study economy, the best way is to order your Shirts, which will cost no more and will keep clean longer than ready-made. Printed instructions and price list sent free. Address:

A. WHITE,

65 KING ST. WEST, TORONTO.

Agents Wanted for "History of Turkey and the War in the East," by Dr. Hammond. Prospectus books are ready. Now is your chance to make money. Address, A. H. HOVEY & CO., Publishers, 16-5-13-280 No. 48 King St. E., Toronto, Ont.



Superior in Style, Elegant in Workmanship, Faultless in Fit. New Ties and Silk Handkerchiefs, including Silk Hemstitched, with embroidered initials; Dent & Fownes' Kid and Tan Gloves; Single-breasted Summer Vests, new styles. W. GRANT & CO., 249 St. James Street. Samples of Shirts sent by mail.

15-18-13-248

\$100 PER MONTH MADE BY SELLING our letter-copying book. No press or water used. Send stamp for circulars. Money refunded. A. ELKIN, Room 11, No. 46 Church Street, Toronto. 15-18-52-239

J. K. MACDONALD,

BLACKSMITH, BELL HANGER, LOCK SMITH, &c., 24 Latour Street, Montreal.

REPAIRS PROMPTLY ATTENDED TO.

15-18-52-238

EMPLOYMENT. We are offering good pay and steady work for one or two enterprising men or women in each County. Send for the most complete Illustrated Chromo Catalogue ever published. W. H. HOPE, 26 Bleury Street, Montreal.

THOS. CREAN,
MERCHANT AND MILITARY TAILOR.

(LATE MASTER TAILOR IN H.M.S.)

SCOTCH TWEEDS, and ENGLISH SERGES, BLACK, BLUE, and GREEN, for Suits, always on hand.

No. 435, Yonge Street,

8-25-24-272

TORONTO.

OTTAWA RIVER NAV. CO'S STEAMERS

BETWEEN MONTREAL AND OTTAWA.

Passengers by Day boat leave Montreal and Ottawa every morning at 7 a.m.

By Night boat leave Montreal and Ottawa at 5 p.m., except on Saturday. Baggage checked through.

Tickets at 13 Bonaventure St. and at Railway Station, Montreal, and at Office, Queen's Wharf, and Russell House, Ottawa.

R. W. SHEPHERD,

President.

15-21-26-259

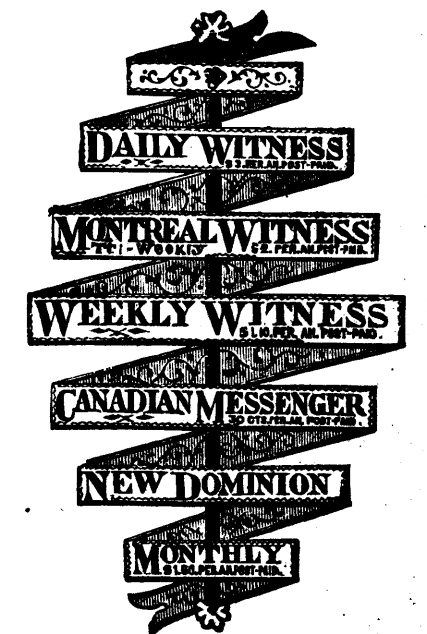
DR. A. PROUDFOOT,
OCULIST AND AURIST.

Artificial Eyes inserted. Residence, 37 Beaver Hall, Montreal.

15-8-52-210

\$12 a day at home. Agents wanted. Outfit and terms free. TRUE & CO., Augusta, Maine.

CHEAPEST AND BEST.



JOHN DOUGALL & SON,

218 and 220, St. James Street, Montreal.

Electrotyping and Job Printing, Chromatic and Plain cheaply and neatly done.



For sale by MCGIBBON & BAIRD, DAVID CRAWFORD, St. James Street, DUFRENE & MONGENAI, Notre Dame Street, and by Grocers generally throughout the Dominion. 15-10-26-216

WANTED MEN to travel and sell to Dealers our new unbreakable glass chimneys and lamp goods. NO PEDDLING. Salary liberal, business permanent. Hotel and traveling expenses paid. MONITOR LAMP CO., 264 Main St., Cincinnati, Ohio.

THE CANADA SELF-ACTING BRICK MACHINES!

Descriptive Circulars sent on application. Also HAND LEVER BRICK MACHINES.

244 Parthenais St., Montreal.

15-17-52-232

BURNER & SHEPPARD.

TO LET

A FIRST-CLASS BRICK DWELLING, No. 1464 Abbottsford Terrace (opposite Emmanuel Church), St. Catherine Street, in good order, well drained, and rat roof. Rent moderate.

Apply to

G. B. BURLAND,

Burland-Desbarats Lith. Co., Bleury St.