

## ANOTHER GOLD MEDAL,

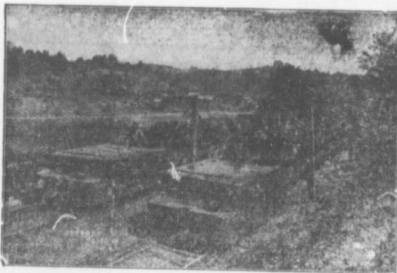
for excellence of display, awarded to  
**J. W. CUMMING & SON,**  
 New Glasgow, N. S.

—MAKERS OF—

“Speedy” Coal Boring Machines, “Acme” Ratchet Rock  
 Boring Machines, Miners’ Tools, Copper Headed  
 Stemmers Copper Pointed Needles,  
 Miners’ Picks, Mauls, Wedges, and  
 other mining appliances.

Quality of material and Excellence of Workmanship  
 —is the motto of the Firm.—

The firm a month or two ago secured an order from the Maritime Coal, Railway & Power  
 Co., Ltd., 200 pit tubs. So highly satisfactory was the work that the first order was, after re-  
 ceipt of the tubs, duplicated.



### JEFFREY

#### COAL MINE EQUIPMENT.

We furnish thoroughly modern and  
 efficient Equipments to meet the  
 requirements of any mining condition.

#### ELECTRIC LOCOMOTIVE

built  
 in sizes to suit any service,—for  
 any haulage proposition, either  
 above or below ground,—operated  
 either from trolley or storage  
 battery attached to Locomotive.

Send for Bulletin I & 15v

Jeffrey 10 and 15 ton Electric Mine Locomotive  
**JEFFREY COAL TILE.**

in design, building, construction and  
 mechanical equipment embody the  
 latest and most successful developments  
 of tippie practice.

Descriptive Bulletin I & 22

Complete  
 Coal Mine Equipments.

**The JEFFREY MFG. CO.**  
**COLUMBUS, OHIO.**

Montreal Factory and Works:  
 Corner Côté and  
 LaGauchetière Sts.

Toronto Office:  
 8 Temp. St.  
 Dineen Building.

