

ment with the Dominion Coal Company there is a minimum royalty which must be paid every year, even if the production falls below the requisite figure to incur that impost. A clause in the new agreement guards the interest of the Province in that respect by providing that the partial royalties will not be included in making up the minimum. The new industry will cause an immediate increase in Provincial revenues, and will make an additional return of about \$100,000 a year after the eight years of partial immunity expire.

#### LUXFER PRISMS.

Thomas W. Horn, William McKenzie, E. B. Osler, M.P., Frederic Nicholls and associates, all of Toronto, are applying for incorporation with a capital stock of \$400,000 to take over the business of the Luxfer

Prism Co., Toronto. The company will erect a large factory on King Street comparatively adjacent to the centre of the city. The manufacture of luxfer prisms will be gone into on a large scale, the business of the old company having developed to such an extent that a larger plant had become an absolute necessity.

The factory which will be erected will occupy a space of about 175 by 40 feet, but because of the heavy machinery used the building will only be two storeys high. In addition to the manufacture of luxfer prisms, the company will make all the better classes of building materials, such as artistic iron work and galvano ornamental designs. The building will be specially adapted for turning out luxfer prisms, however, and two immense electro-glazing tanks will be one of its features.

The development of the luxfer prism company is interesting, because it was in Toronto that the first luxfer prism was put to a commercial use and the first company to control it was formed. Since that time the prisms have been patented in every commercial country in the world, having an average of sixty patents in each country and commanding a capital of \$3,000,000. The business since its inception three years ago has been handled by Mr. T. W. Horn.

The new company will, as quickly as the final arrangements in connection with existing leases on the property secured have been completed, proceed with the erection of the factory.

Messrs. Rider & Kitchener will erect a veneer and excelsior factory at Lindsay, Ont.

## JOHN J. KELLER & CO.

104 and 106 MURRAY ST.  
NEW YORK

220 Church St., Philadelphia.  
135 Pearl St., Boston.  
18 Pryor St., Atlanta, Ga.

## Aniline Colors, Dyewood Extracts, Sumac and Nutgall Extracts.

FAST COLORS for Wool Dyeing,  
One Dip Cotton Colors, Novelties  
and Specialties for Calico  
Printing.

MANUFACTURED BY  
**JOHN R. GEIGY & CO.**  
BASLE, SWITZERLAND

## LIGHT YOUR FACTORY WITH

# LUXFER PRISMS

The latest device for

## LIGHTING

dark rooms and  
offices

## By Daylight

For catalogue  
and estimates  
write to

Luxfer Prism  
Co'y, Limited.

58 Yonge Street, - TORONTO.



## The Best of Everything

is not a bit too good for us.  
It is the kind of material we  
use in the manufacture of  
Shafting, Pulleys, Hangers,  
Tube Cutters, Pipe Cutting  
Machines, Swing Saws, Wood  
Lathes, Dough Mixers, and  
Paper Box Machinery.

Prices furnished  
on application.

## G. T. PENDRITH & CO.,

73 to 81  
Adelaide St. West, TORONTO.

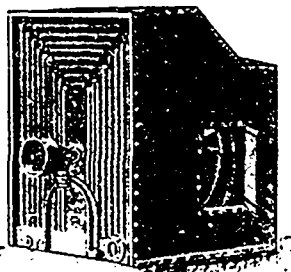
## HEATING . . .

The Fan System of Steam Heating for Heating  
of Factories and all Classes of Buildings.

## DRYING . . .

Appliances for Drying

Lumber, Brick, Wool, Cloth,  
Hair, Soap, Glue, etc.



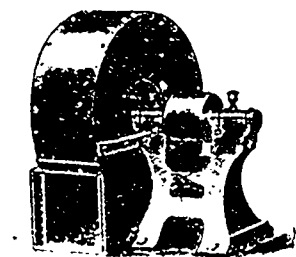
Heater and Housing.

## VENTILATING . . .

Ventilating Fans for removal of Dust, Foul Air, etc.

WRITE FOR CATALOGUE AND PRICES.

**McEachren Heating and  
Ventilating Co., GALT, ONT.**



Fan.

## F. E. ATTEAUX & CO.

53 Colborne Street,  
Toronto.

15 Lemoine Street, Montreal.

Boston, New York,  
Philadelphia, Chicago, and  
Gloucester, N.Y.

**Dyewood Extracts,  
One Dip Alizarines,  
Aniline Colors,  
Dyestuffs and  
Chemicals.**