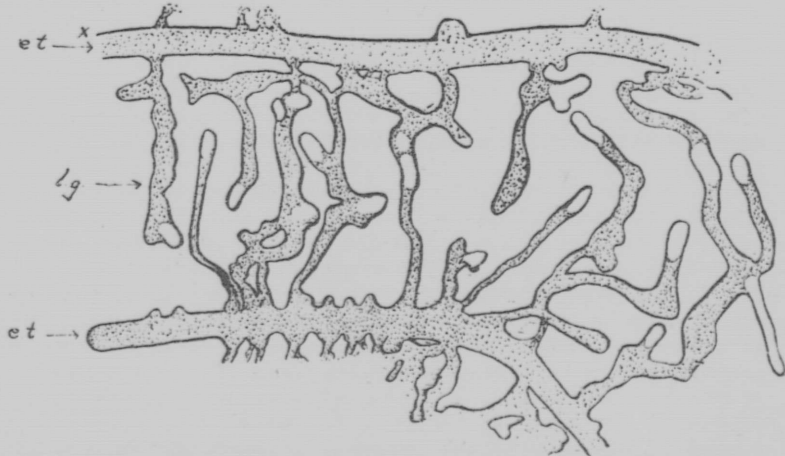
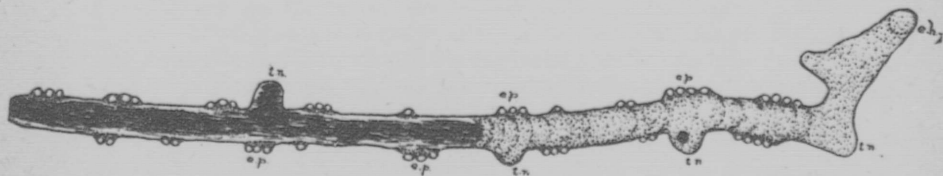


Tunnels of *POLYGRAPHUS RUFIPENNIS* Kirby, in spruce bark. Three stages in the development of the egg-tunnels.



*DENDROCTONUS SIMPLEX* Lec. Development of larval galleries; larvæ half-grown: *e.t.*, egg-tunnels; *l.g.*, larval galleries.



*DENDROCTONUS SIMPLEX* Lec. An egg-tunnel showing egg-pockets, *e.p.*, containing eggs; turning-niches, *t.n.*, and entrance-hole, *e.h.*