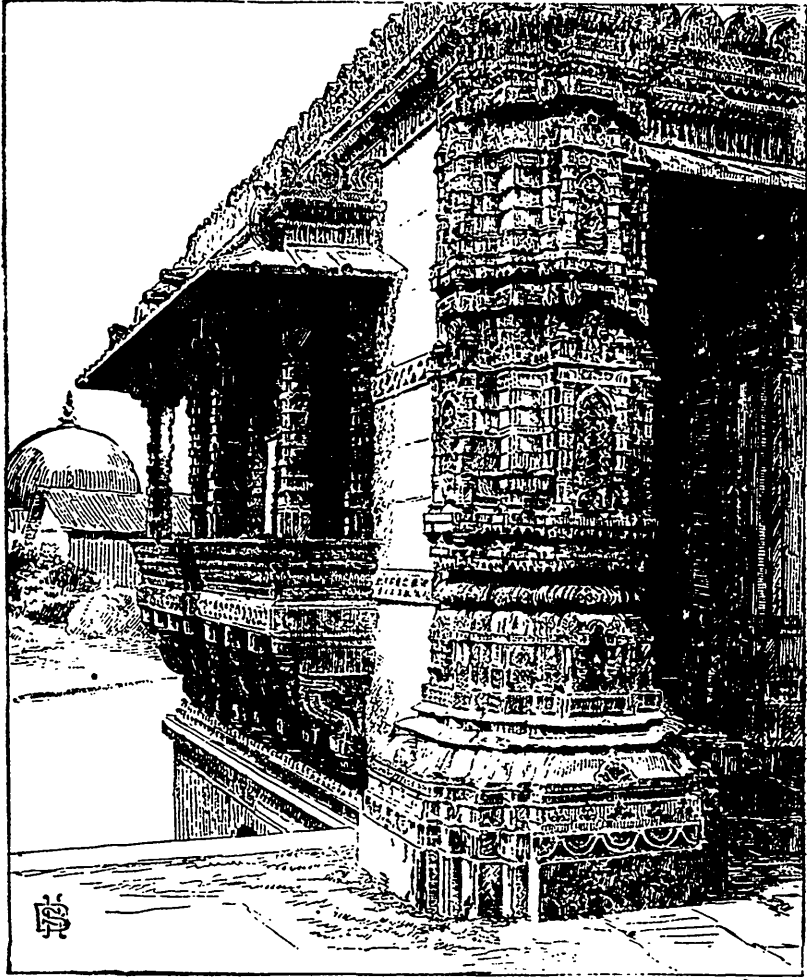


The mosque and tomb of Rani Sipri, or Isni, are two of the most exquisitely beautiful buildings in all India; Mr. Sheppard Dale's illustrations will give a better idea of the charming and infinite detail of their architecture than pages of description. They are small buildings, the mosque being 54 feet long by 19



A CORNER OF RANI SIPRI'S MOSQUE.

feet wide, and the tomb 36 feet square. Rani Sipri was a daughter-in-law of Ahmad Shah, and her mosque and mausoleum were built by herself and completed in the year 1431. Both are in red sandstone, and the mosque windows are perfect specimens of fine carving, one of which is drawn on this page. The whole building, from the base of the pillars to the topmost stone of the minaret,