

# DONALDSON LINE

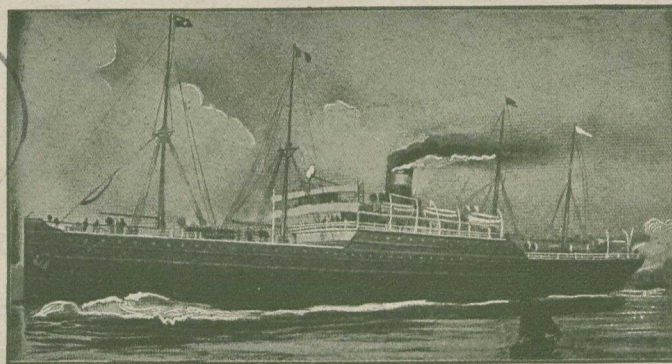
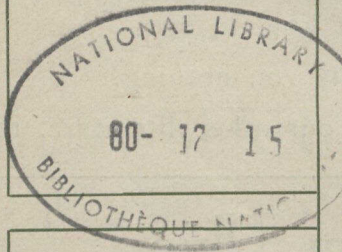
WEEKLY SAILINGS

## TO GLASGOW

From Montreal in Summer and St. John, N.B., in Winter

THE FAVORITE LINE FOR FRUIT AND PERISHABLES—MODERN STEAMERS, PERFECT VENTILATION—USING SIROCCO FANS, COLD STORAGE REFRIGERATORS

Excellent Passenger Accommodation on the High Class Twin-Screw Steamers "Athenia" and "Cassandra."  
Cabin Fares \$35.00 to \$50.00 ; Steerage \$26.50 to \$30.00. Other Steamers, cabin only, \$35.00.



SS. "ATHENIA," 10,500 Tons, Twin Screw

# THOMSON LINE

ATLANTIC REFRIGERATOR SERVICE

WEEKLY SAILINGS

## TO LONDON

ALSO SAILINGS TO NEWCASTLE, LEITH AND ABERDEEN

From Montreal in Summer and Portland, Maine, in Winter

COOL AIR, COLD STORAGE, SIROCCO FANS—FOR BUTTER, CHEESE, BACON, APPLES AND ALL PERISHABLES, USE ONLY THIS LINE

FULLEST INFORMATION GIVEN ON APPLICATION. ASK YOUR RAILWAY AGENT, OR

## The Robert Reford Company, Limited

110 UNION STATION, TORONTO, ONTARIO

HEAD OFFICE—MONTREAL, QUE.

BRANCHES—QUEBEC, ST. JOHN, N.B., and PORTLAND, MAINE