

Dartmouth.

DARTMOUTH'S close proximity to Halifax, with which it is connected by ferry, and the many beautiful spots in and about the town, make it a most desirable residential place, and many of the business and professional men of Halifax make the town their home.

With a water front of four miles and a railroad along its shores the entire distance it offers unusual advantages for shipping, sharing with Halifax the great importance of being possessed of one of the finest and safest harbors in the world.

Dartmouth is the second largest town in the province and is the home of several manufacturing plants.



HEAD OF LAKES, SHOWING ISLANDS.

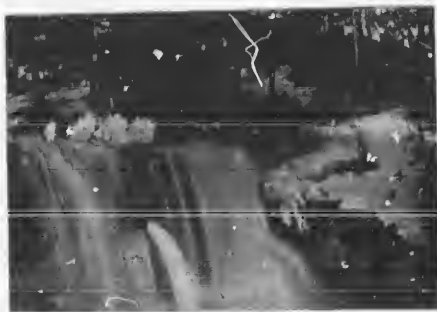
Persons who have spent a lifetime in Dartmouth are often ignorant of its beauties. To see all takes time, but there are several points easily and quickly reached, among which is the Park, the pride of the town, from which may be seen the broad expanse of ocean, and beautiful harbor and city panoramic views. Beyond the town a short distance are the famous Dartmouth Lakes, a chain of remarkable beauty, the shores of which are dotted with summer cottages. A drive around the lakes is most delightful, and carriages may be had at a moderate price for the trip. Another grand drive is to Cow Bay, about nine miles, where there is a fine bathing beach. Other drives include Waverley, a gold mining town, Montague Mines, Bedford Basin, Preston Road, etc. A longer drive is to Lawrencetown, about 20 miles to the eastward. A comfortable hotel provides for the traveler, and the bird shooting in season is excellent.

The Provincial Insane Asylum is located at Dartmouth, on the harbor shore. The ferryboats leave for Halifax every fifteen minutes. Fare, four cents.

Teams may be hired in Dartmouth cheaper than in Halifax.



ON SECOND LAKE.



FALLS AT CRATHORNE'S MILLS.