

Another broad seat is built into the nook formed by the staircase, the square landing of which is directly opposite the fireplace. The arrangement of this stairway is most con-

venient, for above the upper landing the front and back stairs merge into one, as will be seen by a little study of the floor plan. The front stairway runs from the landing in the living room to an upper landing, where it turns again at right angles and goes

which it is divided only by posts and panels with open spaces in the upper part, as shown in the illustration of the fireplace. Beyond this dining room again is a nook, the end of

DESIGN NUMBER 4.

The farmhouse (Design No. 4) is an exceptionally good one, not only because the building, simple as it is, is unusually graceful in line and proportion, but because the interior is so arranged as to simplify greatly the work of the household and to give a



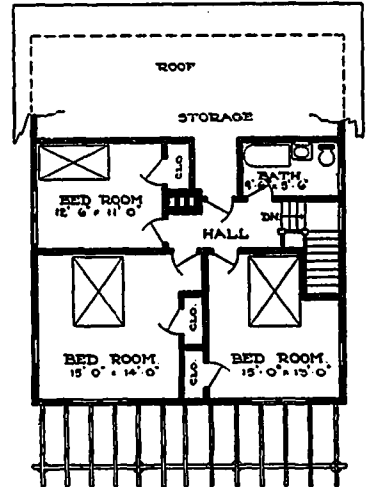
Design No. 4.—Front view of an unusually graceful design for a suburban house. The walls are covered with shingles or clapboards; the roof shingled; the terrace of cement or vitrified brick. The pergola, which is shown in this view, is of a rustic character.

which is completely filled by a large fireplace which uses the same flue as the kitchen range and the stove in the outside kitchen. The seat in this nook is not built in, but a broad bench or settle would be very comfortable if placed as suggested in the plan.

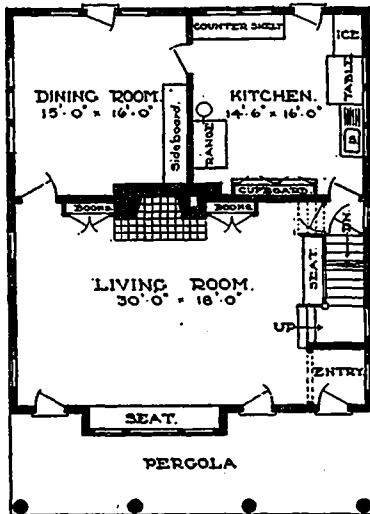
The kitchen has a built-in cupboard on the side next the dining room and a broad work-table with drawers below at right angles to the drain board of the sink. It is not a large kitchen, but is so compactly arranged that there is plenty of room for all the

great deal of room within a comparatively small compass.

The plan is distinctly and definitely that of a farmhouse, and in this frank expression of its character and use lies the chief charm of the dwelling. The walls are covered with shingles or clapboards, according to the taste



Second floor plan of Design No. 4.



FARMHOUSE: FIRST FLOOR PLAN
Ground floor plan of Design No. 4.

up three steps into the upper hall. The back stairway also runs up from the pantry to this upper landing, from which it is divided by a door, so that the three steps leading from this landing to the upper hall are utilized both from the front and the back of the house. The cellar stairs open from the pantry, going down directly beneath the front stairs, so that no space is wasted.

The dining room is simply a continuation of the living room, from



Rear view of Design No. 4 of suburban house, showing the broad sweep of roof. Note the slight projection in the shingled wall that forms a cap over each window or group of windows. This not only affords protection, but is a very interesting feature of the construction.

work that is to be done—which work is greatly simplified by the small space and convenient arrangement. Up-

or means of the owner. The roof, of course, would be shingled, and for the sake of durability, would be paint-