



DON'T BUY

until you have seen the Extra Fine and Large Assortment of the very LATEST STYLES of FELT HATS at

R. W. COWAN & CO'S,
CORNER OF

Notre Dame and St. Peter Streets.

CANADA PAPER CO.

Paper Makers and Wholesale Merchants,

374, 376 & 378 St. Paul Street.

MONTREAL, P. Q.

-AND-

11 FRONT STREET,

TORONTO, ONT.



JOHNSTON'S

FLUID BEEF is

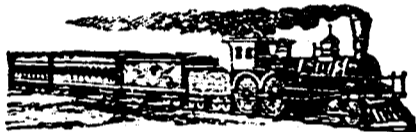
being adopted in the BRITISH, French, U. S., and Austrian Navies, Military and General hospitals. It is prescribed by the Queen's physician, and by every medical man who has tested its merits. It is the only essence known which contains all the nutritive constituents of beef, and is pronounced by scientific men everywhere to be the most perfect food for invalids ever introduced. Sold by Druggists and Grocers, 3c., 6c., and \$1.00.

HENRY R. GRAY'S

DENTAL PEARLINE!

A Fragrant Tooth Wash. Superior to Powder Cleanses the teeth. Purifies the breath. Only 25c. per bottle, with patent Sprinkler. For sale at all Drug Stores.

50 TORTOISE, Scroll, Wreath, Chromo, Motto and Floral Cards, 16c. U. S. Card Co., Northford, Ct.



Q. M. O. AND O. RAILWAY.

Change of Time.

COMMENCING ON

Thursday, Dec. 23rd, 1880.

Trains will run as follows:

	MIXED.	MAIL.	EXPRESS.
Leave Hochelaga for Ottawa.....	1.30 a.m.	8.30 a.m.	5.15 p.m.
Arrive at Ottawa.....	11.30 a.m.	1.10 p.m.	9.55 p.m.
Leave Ottawa for Hochelaga.....	12.19 a.m.	8.10 a.m.	4.55 p.m.
Arrive at Hochelaga.....	10.30 a.m.	12.50 p.m.	9.35 p.m.
Leave Hochelaga for Quebec.....	6.00 p.m.	3.00 p.m.	10.00 p.m.
Arrive at Quebec.....	8.00 a.m.	9.55 p.m.	6.30 a.m.
Leave Quebec for Hochelaga.....	5.30 p.m.	10.10 a.m.	10.00 p.m.
Arrive at Hochelaga.....	8.00 a.m.	5.00 p.m.	6.30 a.m.
Leave Hochelaga for St. Jerome.....	5.30 p.m.	—	—
Arrive at St. Jerome.....	7.15 p.m.	—	—
Leave St. Jerome for Hochelaga.....	6.45 a.m.	—	—
Arrive at Hochelaga.....	9.00 a.m.	—	—
Leave Hochelaga for Joliette.....	5.00 p.m.	—	—
Arrive at Joliette.....	7.25 p.m.	—	—
Leave Joliette for Hochelaga.....	6.00 a.m.	—	—
Arrive at Hochelaga.....	8.20 a.m.	—	—

(Local trains between Hull and Aylmer.)
Trains leave Mile-End Station Seven Minutes Later.
Magnificent Palace Cars on all Passenger Trains, and Elegant Sleeping Cars on Night Trains.
Trains to and from Ottawa connect with Trains to and from Quebec.
Sunday Trains leave Montreal and Quebec at 4 p.m.
All Trains Run by Montreal Time.

GENERAL OFFICES—13 PLACE D'ARMES.

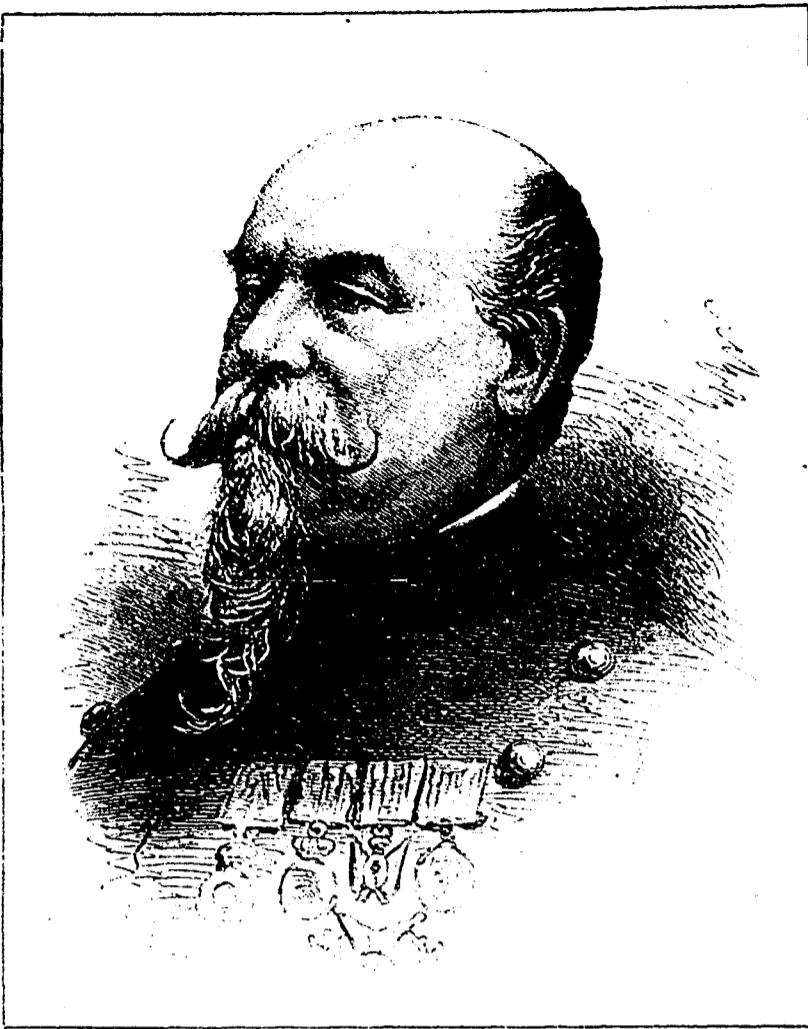
TICKET OFFICES:

13 Place D'Armes, } MONTREAL.
202 St. James Street,
Opposite ST. LOUIS HOTEL, Quebec.
L. A. BENEAL, Gen'l Sup't.



BURTON'S
ALL HEALING TAR
AND
GLYCERINE SOAP
Cures all Diseases of the SKIN in MAN or BEAST. Makes the hands soft and smooth.
ASK FOR BURTON'S.

Gray's
SYRUP OF RED SPRUCE GUM
Sole By
All Druggists



GENERAL BOSCO.

LEA & PERRINS' SAUCE

In consequence of Imitations of THE WORCESTERSHIRE SAUCE which are calculated to deceive the Public, Lea and Perrins have to request that Purchasers see that the Label on every bottle bears their Signature thus—



Lea Perrins



without which no bottle of the original WORCESTERSHIRE SAUCE is genuine.

Ask for LEA and PERRINS' Sauce, and see Name on Wrapper, Label, Bottle and Stopper. Wholesale and for Export by the Proprietors, Worcester; Cross and Blackwell, London, &c., &c.; and by Grocers and Oilmen throughout the World.

To be obtained of

MESSRS. J. M. DOUGLASS & CO., MONTREAL; MESSRS. HURQUHART & CO., MONTREAL.



CAFE DES GOURMETS.

ACKERMANN BROS.

It is a well-known fact that Coffee roasted in the ordinary manner and not placed in air-tight receptacles, is greatly deteriorated by evaporation of the aromatic particles, and as this process goes on for months afterwards, the result is apparent to every one.

WHAT IS CLAIMED FOR IT.

Being roasted and ground in a Patent Apparatus, packed in Glass Jars while hot and then hermetically sealed; by this process not a particle of the Aroma is lost.

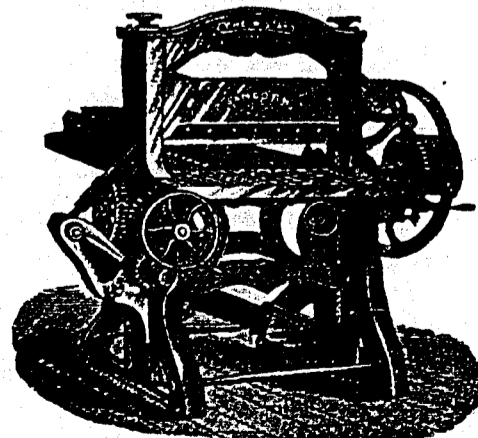
It is much stronger, for the reason that it is roasted higher, after the manner of the French. They put no water with it while in the process of roasting, as is universally done to save weight.

It is more economical, as two-thirds of this is equivalent to one pound of the other Coffee.

It is clarified, has a beautiful colour, the flavour is delicious, wholesome and invigorating.

WILLIAM JOHNSON & CO.,

77 St. James Street, Sole Agents, Montreal.



THE STAR.

30 inch, 32 inch, 34 inch, 36 inch, 44 inch, 46 inch.

BOOK BINDERS'
PRINTERS' and
PAPER BOX
MAKERS'
MACHINERY
NEW YORK,
25 Beekman St.
CHICAGO,
77 Monroe St.
GEO. H. SANBORN,
Standard Machinery Co.

WILLIAM DOW & CO.
BREWERS and MALTSTERS,
MONTREAL.



Superior Pale and Brown Malt, India Pale, and other Ales, Extra Double and Single Stout in Wood and Bottle. Shipping orders promptly executed. Families supplied. 18-6-32-222

1000 AGENTS WANTED for Visiting Cards, Books, and Novelties. Ours 3c. Big Profits. 50 gilt edge cards, in case, 25c. Detectives Club, 30c. Bird Call, 15c. A. W. KINNEY, Yarmouth, N.S.

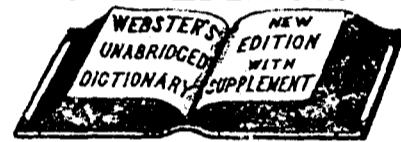
JOHN McARTHUR & SON,
OIL & COLOR MERCHANTS.
PROPRIETORS OF THE
CELEBRATED



WHITE LEAD.
MONTREAL.

\$72 A WEEK. \$12 a day at home easily made. Costly Ointment. Address TRUK & Co., Augusta, Maine.

NEW EDITION.



Published by G. & C. MERRIAM, Springfield, Mass.

LATEST--LARGEST--BEST.

Contains over 118,000 Words, 1928 Pages, 3000 Engravings, 4800 NEW WORDS and Meanings, Biographical Dictionary of over 9700 Names.

From The Canada Educational Monthly, Toronto.—And just here comes in the contrast of the position of the Englishman with that of his kinsman on this side of the Atlantic. He has no "Webster;" no book of an all-satisfying requirement, no one reference work in which he will find all that he may be in quest of, no single quarry that will yield him every one his demands require the inspection of—such as he may find in the mammoth "Unabridged Webster." Having regard to its issues, its thoroughness, its compactness, and its price, it is an amazing product of literary skill and mechanical workmanship.

There should not be a school in the Dominion, where access cannot readily and constantly be had to it. No teacher, and we might add, no reader of the language, can afford to be without it, for it is a monumental work, a noble tribute to our grand old mother-tongue.

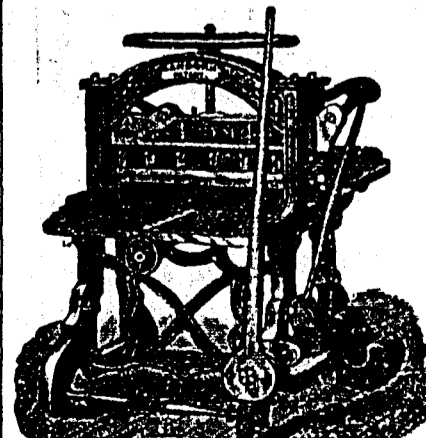
From London Quarterly Review.—On the whole, as it stands, it is most respectable, and certainly the BEST PRACTICAL ENGLISH DICTIONARY EXTANT.

"A necessity to every educated man."—Lord Brougham.

"Every scholar knows its value."—W. H. Prescott, the Historian.

"The book has become indispensable to every student of the English language."—Morrison R. White, Chief Justice U. S.

THE Prettiest Toy Book yet published. Pretty Peggy and other Ballads, by Rosina Emmet. Beautifully illustrated in colours. Fancy covers \$2.00. Mailed from CLOUGH BROS., Booksellers, Toronto.



THE GEM.

30 inch, 32 inch.